



## Grasgarth Close Acton London

Asking Price £425,000



2



1



1



C



# Grasgarth Close Acton London

Asking Price £425,000



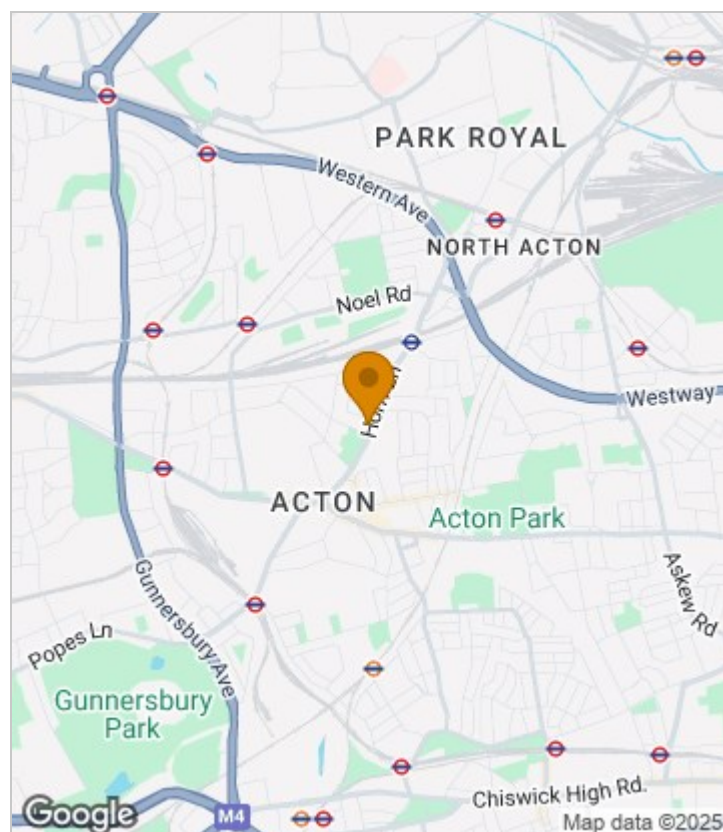
## Summary Description

Grasgarth Close W3. Set within a gated development this second floor two bedroom apartment offers great proportions throughout. There's a spacious reception room with double aspect windows, two generously proportioned bedrooms, two bathrooms (one en-suite shower room). The kitchen is fully fitted with appliances. The property further benefits from gated off street parking with a private allocated parking space (space 29).

The apartment is conveniently located for all the amenities on Horn Lane, Poet's Corner or Acton High Street. Transport wise there's a number of options such as Acton Main Line on the Elizabeth Line or Acton Town on the District or Piccadilly Lines. There are also a number of bus routes from Acton High Street in to Central London. For the motorist the A40 and A4 are only a short drive away enabling easy out to the West of London. For recreational use Springfield Park is only moments away from the property

Lease 127yrs Service Charge £3,080 pa, Gr £228 pa  
London Borough of Ealing.

## Area Map

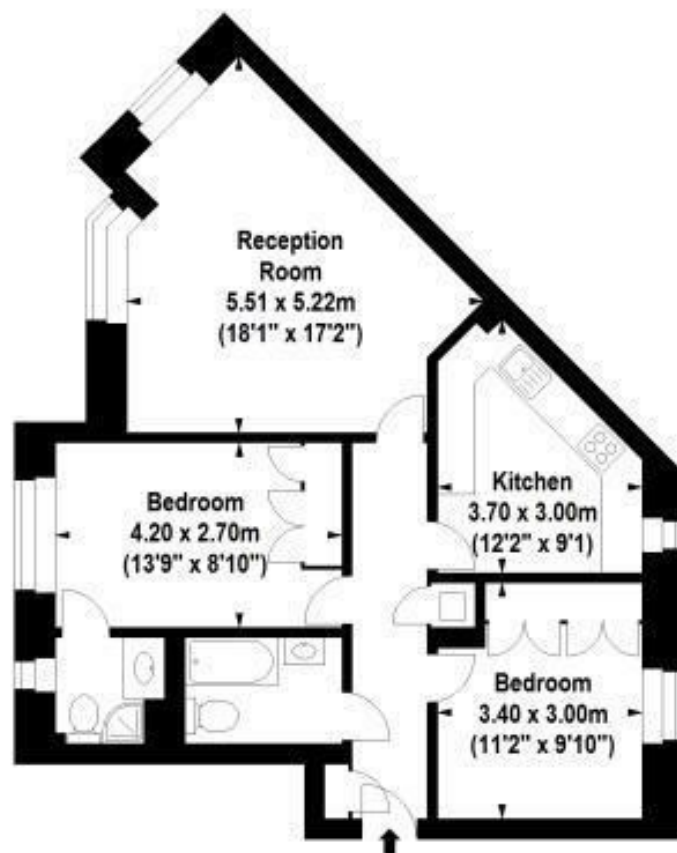








## Floor Plan



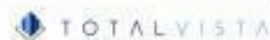
Second Floor

For Identification Purposes Only. Not To Scale. © www.totalvista.co.uk 2017.

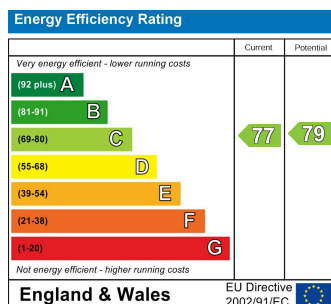


Grasgarth Close, W3

Approx. Gross Internal Area  
66.80 Sq M - 719 Sq Ft



## Energy Efficiency Graph



## Viewing

Please contact our Sales SB Office on 0208 740 8740 if you wish to arrange a viewing appointment for this property or require further information.

- GATED DEVELOPMENT
- TWO BEDROOMS
- SECOND FLOOR APARTMENT
- CLOSE TO AMENITIES ON ACTON HIGH STREET
- MOMENTS FROM SPRINGFIELD PARK
- PRIVATE PARKING SPACE
- TWO BATHROOMS ( ONE EN-SUITE)
- SHORT WALK TO ELIZABETH LINE
- CLOSE TO POET'S CORNER

For further information contact:

Sales SB, 234 Uxbridge Road, Shepherds Bush, London, W12 7JD

Tel: 0208 740 8740 Email: [enquiries@jorgensenturner.com](mailto:enquiries@jorgensenturner.com)

<https://www.jorgensenturner.com/>

### Disclaimer

These particulars, whilst believed to be accurate are set out as a general outline only for guidance and do not constitute any part of an offer or contract. Intending purchasers should not rely on them as statements of representation of fact, but must satisfy themselves by inspection or otherwise as to their accuracy. No person in this firm's employment has the authority to make or give any representation or warranty in respect of the property.

