



Holland Park, London,
W11 3TD

Asking Price £1,050,000



2 1 1 C

Holland Park, London, W11 3TD

Asking Price £1,050,000



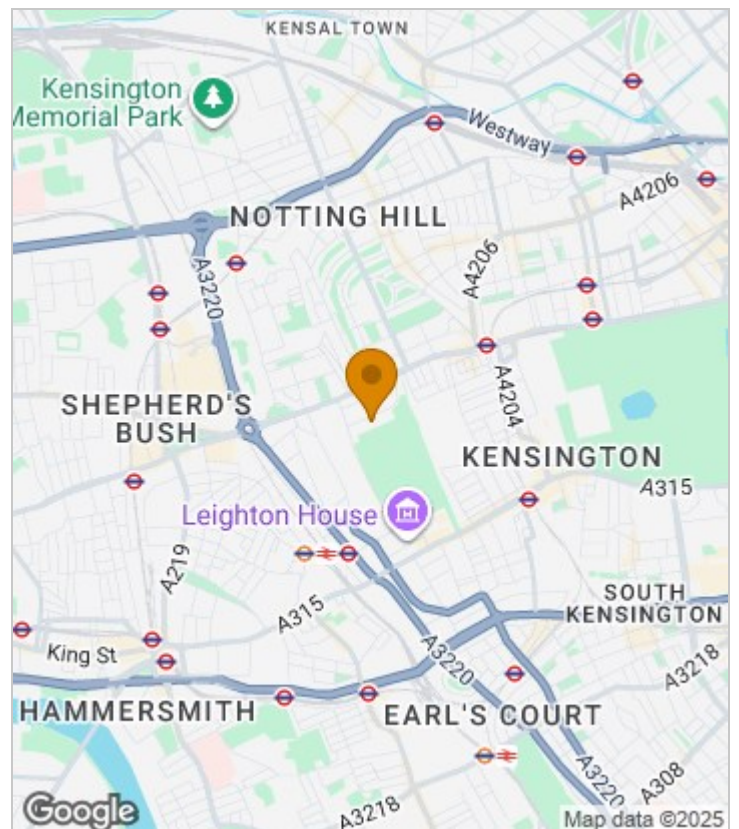
Summary Description

Holland Park W11. A rare opportunity to live on one of London's premiere addresses. The apartment is set within this grand period building and offers an impressive open-plan Kitchen reception space, two bedrooms (one with be-spoke fitted wardrobes) and modern three piece bathroom.

Located moments away from the lovely open spaces of Holland Park. Holland Park Avenue and Notting Hill Gate are a short walk away offering an abundance of cafes, bars and restaurants. Transport wise the location is extremely well served by Holland Park and Notting Hill Gate tube stations and numerous bus routes along Holland Park Avenue.

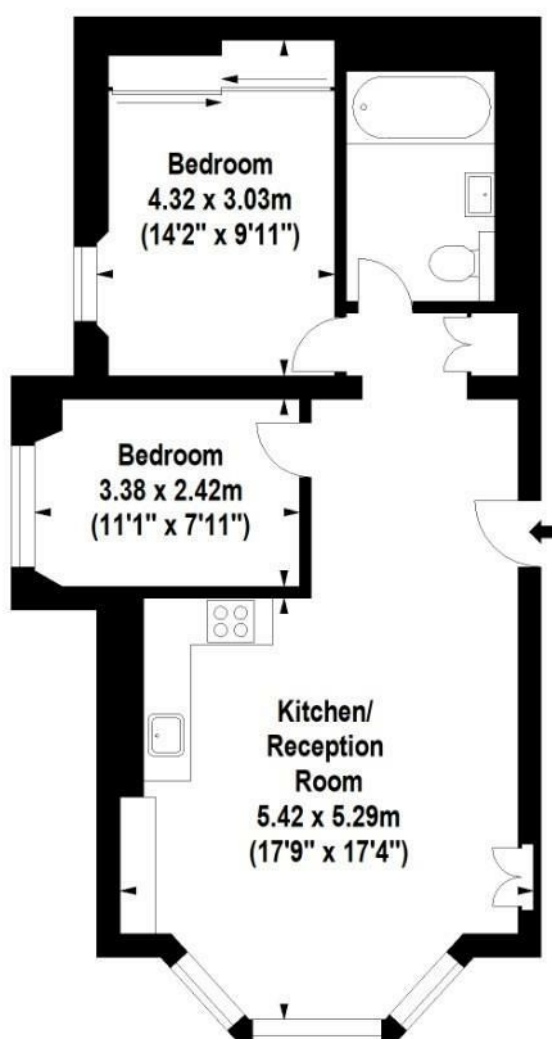
Lease 128 yrs, Service Charge £12,000pa

Area Map





Floor Plan



Lower Ground Floor



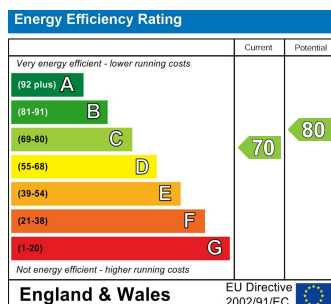
For Identification Purposes Only. Not To Scale. © www.totalvista.uk 2025

Holland Park, W11

Approx. Gross Internal Area
61.87 Sq M - 666 Sq Ft

TOTALVISTA

Energy Efficiency Graph



Viewing

Please contact our Sales SB Office on 0208 740 8740 if you wish to arrange a viewing appointment for this property or require further information.

- PRIME RESIDENTIAL ROAD
- MOMENTS FROM HOLLAND PARK
- SHORT WALK TO NOTTING HILL GATE
- GRAND PERIOD BUILDING
- TWO BEDROOMS
- IMPRESSIVE RECEPTION SPACE
- LONG LEASE
- CHAIN FREE

For further information contact:

Sales SB, 234 Uxbridge Road, Shepherds Bush, London, W12 7JD

Tel: 0208 740 8740 Email: enquiries@jorgensenturner.com

<https://www.jorgensenturner.com/>

Disclaimer

These particulars, whilst believed to be accurate are set out as a general outline only for guidance and do not constitute any part of an offer or contract. Intending purchasers should not rely on them as statements of representation of fact, but must satisfy themselves by inspection or otherwise as to their accuracy. No person in this firm's employment has the authority to make or give any representation or warranty in respect of the property.