



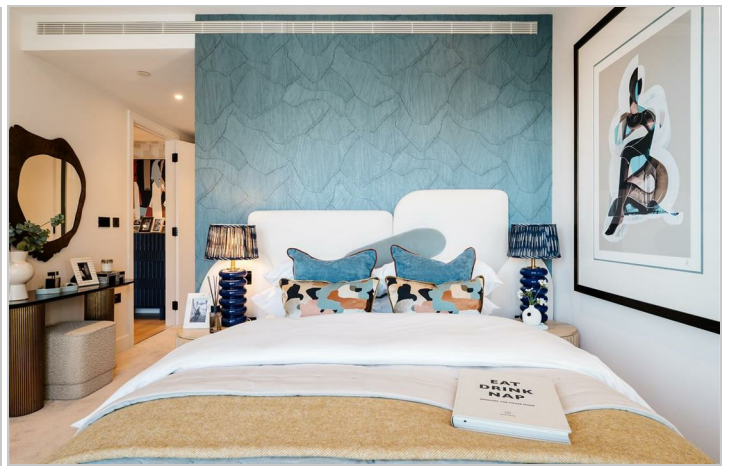
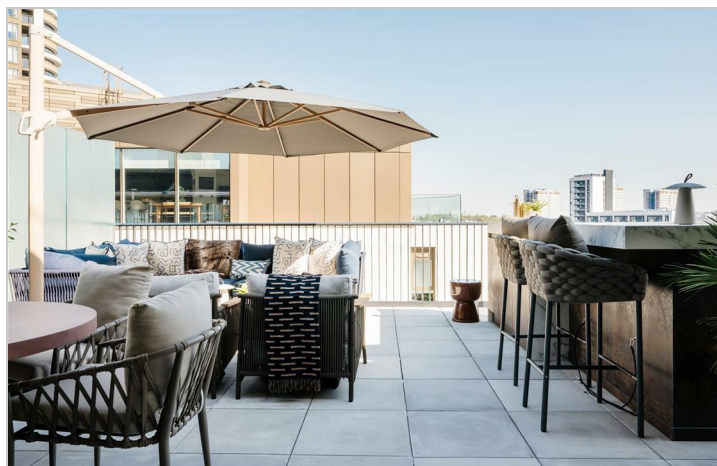
Wood Lane, White City,
London

Prices From £1,100,000



Wood Lane, White City, London

Prices From £1,100,000



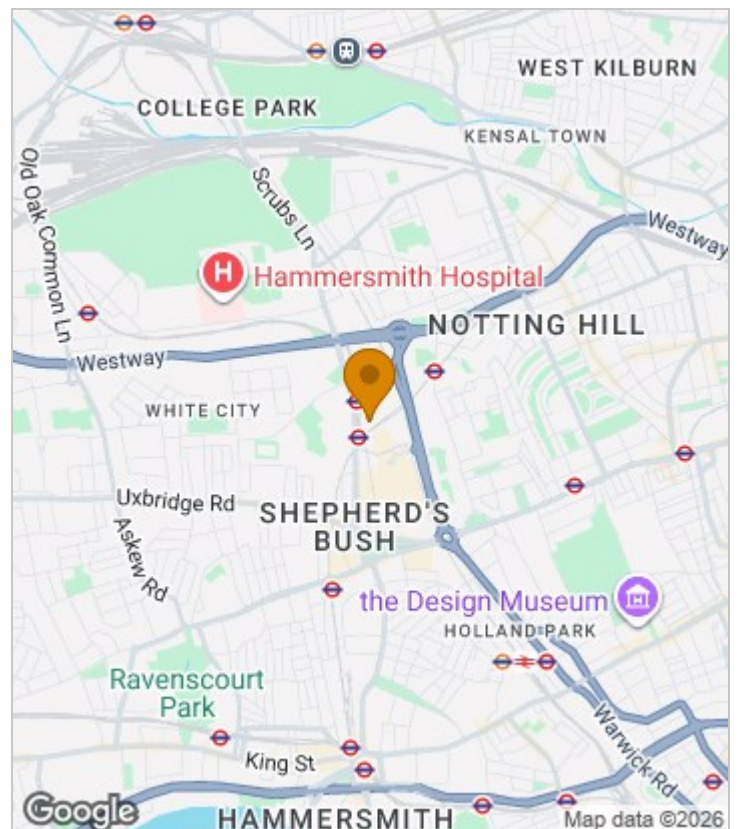
Summary Description

WHITE CITY LIVING A range of exclusive two bedroom apartments in is this world class development. There's access to a rooftop beach club with panoramic views across London, cinema facilities, gym and entertainment suite. There's 24 hr concierge.

White City is set within eight acres of parks and gardens, surrounded by the expansive Westfield shopping centre, entertainment, education, and culture. It is adjacent to two Zone 2 Tube stations and less than 15 minutes from the West End.

For further information about availability email Jamie Short jamies@jorgensenturner.com or Paul Jorgensen paulj@jorgensenturner.com

Area Map

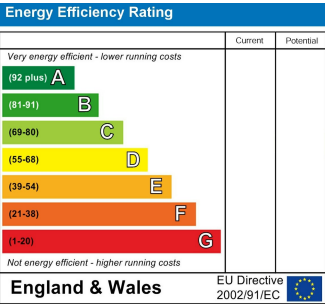




Floor Plan



Energy Efficiency Graph



Viewing

Please contact our Sales SB Office on 0208 740 8740 if you wish to arrange a viewing appointment for this property or require further information.

- RANGE OF ONE BEDROOM APARTMENTS
- 24 HOUR CONCIERGE
- GYM FACILITIES
- ENTERTAINMENT SUITES
- MOMENTS FROM WESTFIELD WHITE CITY
- TWO ZONE 2 TUBE STATIONS

For further information contact:
Sales SB, 234 Uxbridge Road, Shepherds Bush, London, W12 7JD
Tel: 0208 740 8740 Email: enquiries@jorgensenturner.com
<https://www.jorgensenturner.com/>

Disclaimer
These particulars, whilst believed to be accurate are set out as a general outline only for guidance and do not constitute any part of an offer or contract. Intending purchasers should not rely on them as statements of representation of fact, but must satisfy themselves by inspection or otherwise as to their accuracy. No person in this firms employment has the authority to make or give any representation or warranty in respect of the property.

