



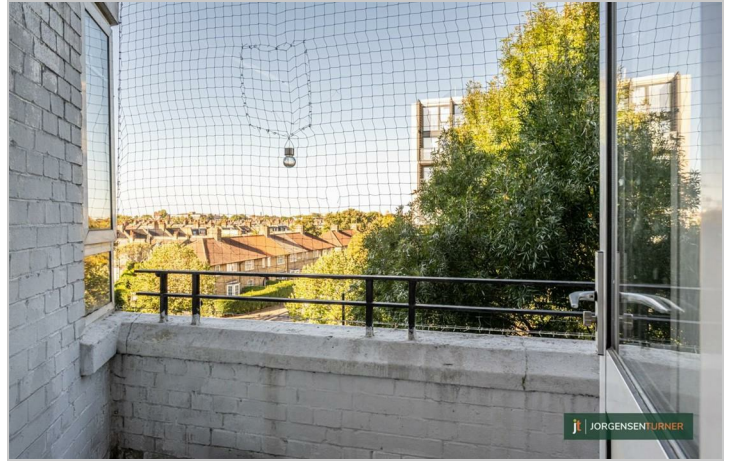
White City Estate, London

Asking Price £395,000



White City Estate, London

Asking Price £395,000



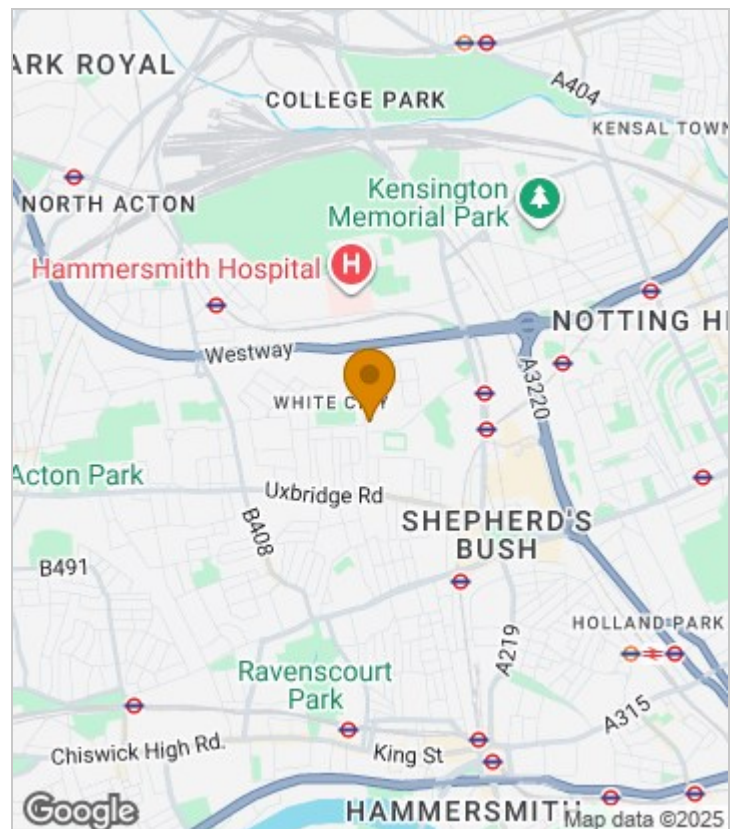
Summary Description

Situated on the third floor of a centrally located purpose-built block, this spacious two-bedroom apartment offers well-balanced living space, ideal for both first-time buyers and investors alike.

The property comprises a generously sized reception room, a separate fitted kitchen, two double bedrooms, a family bathroom, and a separate WC. Offered to the market with no onward chain, this apartment presents an excellent opportunity for those seeking a comfortable home or a strong rental investment.

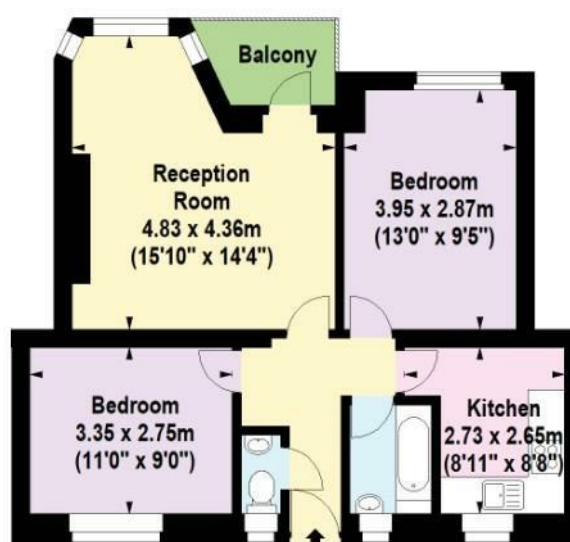
Campbell House is ideally positioned just a short walk from the vibrant heart of Shepherd's Bush, with its extensive selection of shops, cafes, bars, and restaurants, as well as the renowned Westfield London shopping centre. Exceptional transport connections are available nearby, including: White City Station (Central Line), Shepherd's Bush Market (Hammersmith & City Line), multiple bus routes via Uxbridge Road and Wood Lane, quick access to the A40 for motorists.

Area Map





Floor Plan



Third Floor

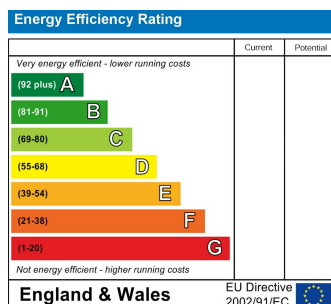
For Identification Purposes Only. Not To Scale. © www.totalvista.uk 2025

**Campbell House,
White City Estate, W12**

Approx. Gross Internal Area
56.02 Sq M - 603 Sq Ft



Energy Efficiency Graph



Viewing

Please contact our Sales SB Office on 0208 740 8740 if you wish to arrange a viewing appointment for this property or require further information.

- TWO DOUBLE BEDROOMS
- CHAIN FREE
- BALCONY
- CLOSE TO WESTFIELD WHITE CITY
- GOOD CONDITION THROUGHOUT
- OVER 600 SQFT

For further information contact:

Sales SB, 234 Uxbridge Road, Shepherds Bush, London, W12 7JD

Tel: 0208 740 8740 Email: enquiries@jorgensenturner.com

<https://www.jorgensenturner.com/>

Disclaimer

These particulars, whilst believed to be accurate are set out as a general outline only for guidance and do not constitute any part of an offer or contract. Intending purchasers should not rely on them as statements of representation of fact, but must satisfy themselves by inspection or otherwise as to their accuracy. No person in this firm's employment has the authority to make or give any representation or warranty in respect of the property.