

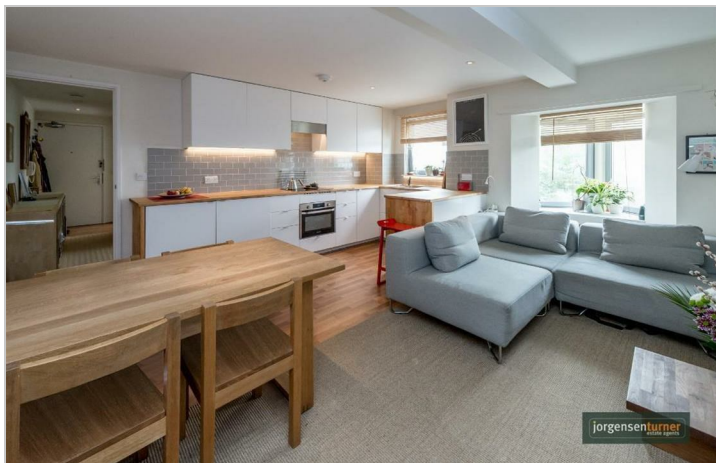


**Normandy Place Bourbon
Lane Shepherds Bush**
Asking Price £385,000



Normandy Place Bourbon Lane Shepherds Bush

Asking Price £385,000



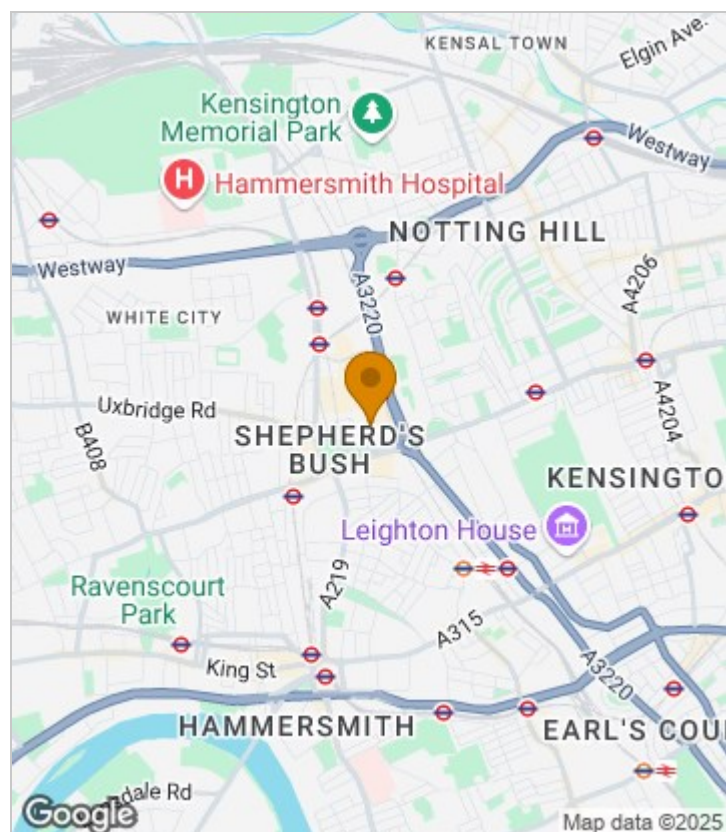
Summary Description

Normandy Place W12. Contemporarily designed, well balanced, one double bedroom flat in the centre of Shepherds Bush. The flat has an open-plan kitchen reception, the matt white kitchen units are finished with solid wood counters and under lighting. The double bedroom is generous in proportion and the modern bathroom suite has a spacious utility cupboard. The reception room has East-facing windows with excellent natural light. The flat is also gas central heated and is double glazed throughout.

Normandy Place, W12 is situated in the heart of Shepherds Bush with unrivalled access to all the retail experiences in Westfield White City and Shepherds Bush Green. Transport wise the location is superbly served by Shepherds Bush (Central Line Tube), Shepherds Bush Market (Hammersmith and City and Circle Line tubes) and Shepherds Bush overland station.

Lease 110 yrs, Service Charge £3,053pa. EPC Band C

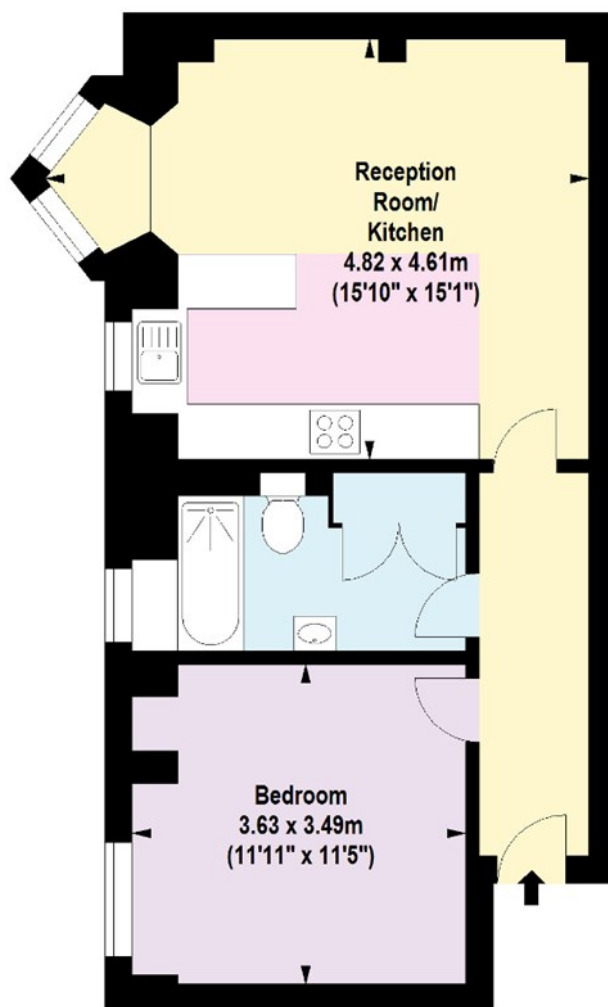
Area Map





Floor Plan

jorgensenturner
estate agents



Second Floor

For Identification Purposes Only. Not To Scale. © www.totalvista.uk 2018

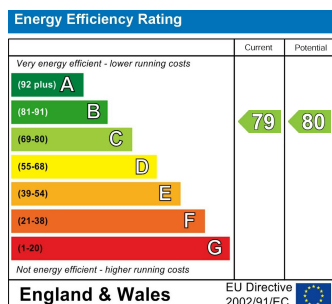
Normandy Place, W12

Approx. Gross Internal Area
48.87 Sq M - 526 Sq Ft

TOTALVISTA



Energy Efficiency Graph



Viewing

Please contact our Sales SB Office on 0208 740 8740 if you wish to arrange a viewing appointment for this property or require further information.

- LARGE DOUBLE BEDROOM
- MATT WHITE KITCHEN WITH WOODEN COUNTERS
- EXCELLENT CONDITION
- CLOSET TO CENTRAL LINE TUBE
- SECOND FLOOR APARTMENT
- CENTRAL LOCATION
- LONG LEASE
- LIFT TO FLOOR LEVEL THROUGHOUT
- MOMENTS FROM WESTFIELD CENTRE

For further information contact:

Sales SB, 234 Uxbridge Road, Shepherds Bush, London, W12 7JD

Tel: 0208 740 8740 Email: enquiries@jorgensenturner.com

<https://www.jorgensenturner.com/>

Disclaimer

These particulars, whilst believed to be accurate are set out as a general outline only for guidance and do not constitute any part of an offer or contract. Intending purchasers should not rely on them as statements of representation of fact, but must satisfy themselves by inspection or otherwise as to their accuracy. No person in this firm's employment has the authority to make or give any representation or warranty in respect of the property.

