



Coningham Road,  
Shepherds Bush, London

Asking Price £535,000



# Coningham Road, Shepherds Bush, London

Asking Price £535,000



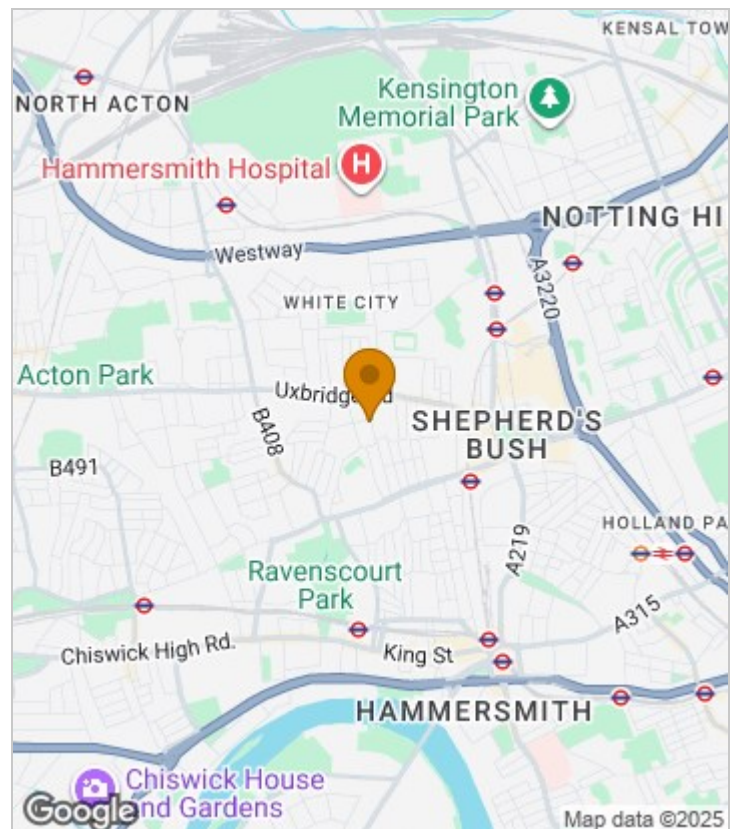
## Summary Description

Coningham Road W12. A beautifully presented two bedroom garden flat offering charm and character throughout. Once you've entered through your own private front door, there's a modern bathroom and a generous double bedroom to the front. To the middle there's a spacious open plan kitchen reception room leading with French doors leading out on to secluded 45ft rear garden. The property further benefits from being offers with a long lease and chain free.

Coningham Road is a prime residential roads enabling easy access to all the amenities on offer in Shepherd's Bush or Hammersmith. The location has fantastic transport links with a number of convenient buses running from either the Goldhawk Road or the Uxbridge Roads. There are also a number of tubes within the immediate area with the Hammersmith and City Line on Goldhawk Road, the Central Line station at Shepherds Bush or the British Rail station at Shepherds Bush. For recreational use the lovely open spaces of Ravenscourt Park are only a short walk away.

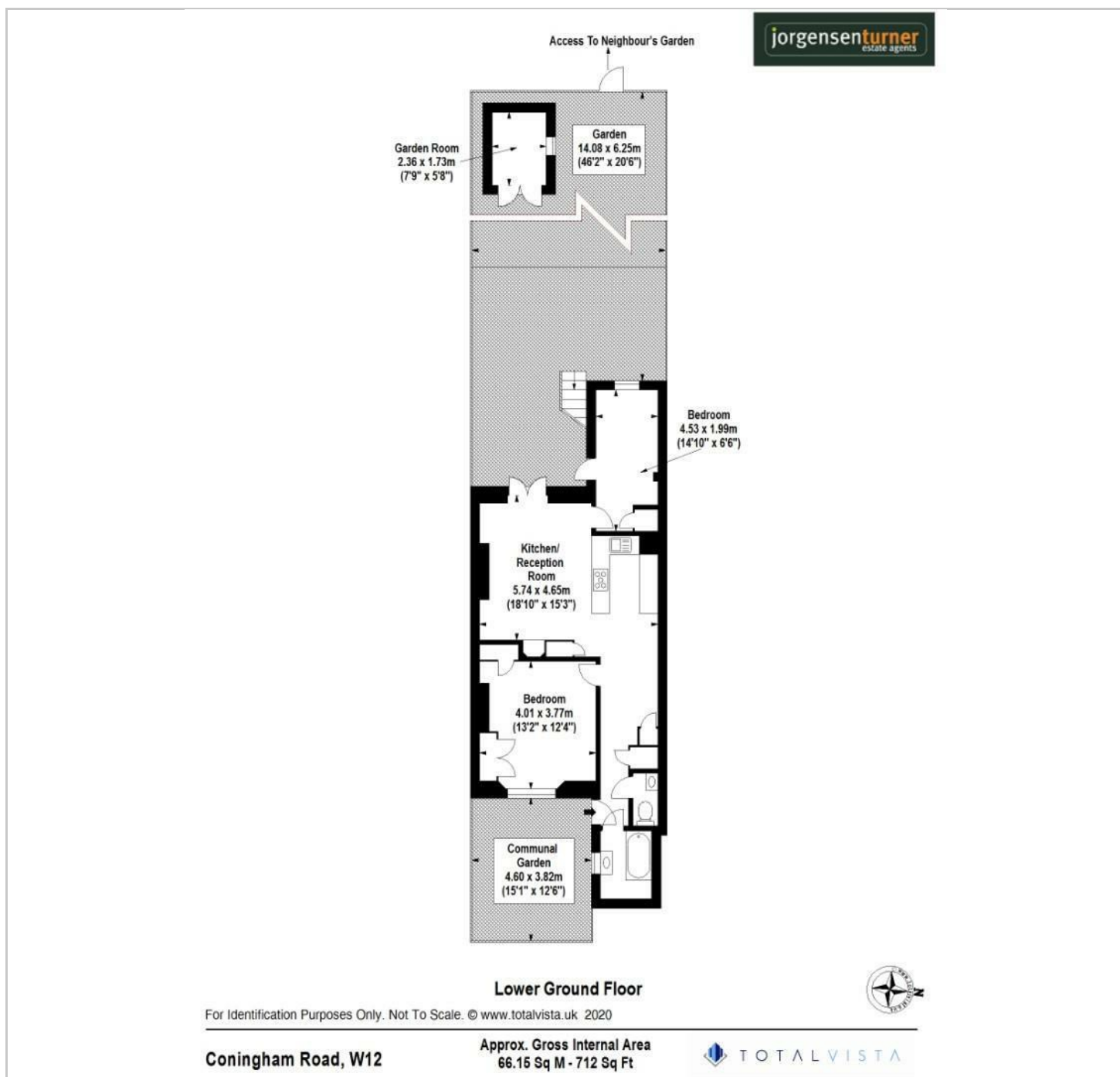
Leasehold 179 yrs, Service charge- Ad hoc, Gr £10pa. Council Tax band D

## Area Map

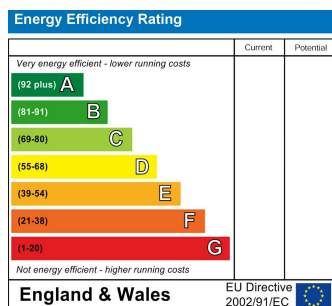




## Floor Plan



## Energy Efficiency Graph



## Viewing

Please contact our Sales SB Office on 0208 740 8740 if you wish to arrange a viewing appointment for this property or require further information.

- ATTRACTIVE GARDEN FLAT
- LOWER GROUND FLOOR
- PRIVATE FRONT DOOR
- LONG LEASE
- SHEPHERDS BUSH CENTRAL LINE
- TWO BEDROOMS
- CHAIN FREE
- OFFERED IN GOOD DECORATIVE ORDER
- SHORT WALK TO WESTFIELD WHITE CITY
- HAMMERSMITH AND CITY TUBE

For further information contact:

Sales SB, 234 Uxbridge Road, Shepherd's Bush, London, W12 7JD

Tel: 0208 740 8740 Email: [enquiries@jorgensenturner.com](mailto:enquiries@jorgensenturner.com)

<https://www.jorgensenturner.com/>

### Disclaimer

These particulars, whilst believed to be accurate are set out as a general outline only for guidance and do not constitute any part of an offer or contract. Intending purchasers should not rely on them as statements of representation of fact, but must satisfy themselves by inspection or otherwise as to their accuracy. No person in this firm's employment has the authority to make or give any representation or warranty in respect of the property.

