



Tunis Road, Shepherds  
Bush, W12

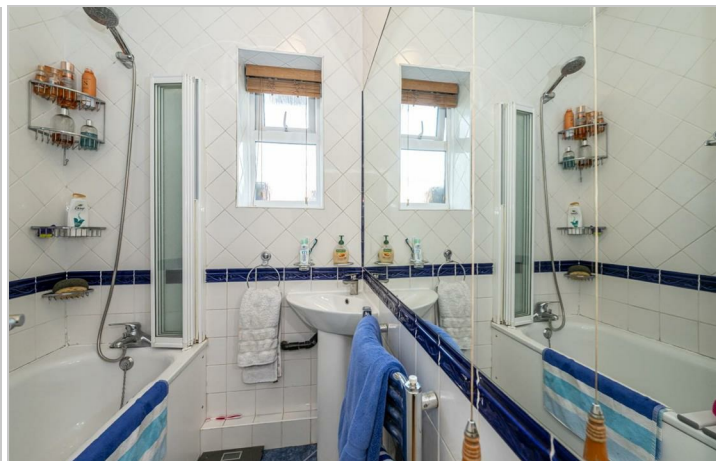
Asking Price £450,000



 3  1  1  D

# Tunis Road, Shepherds Bush, W12

Asking Price £450,000



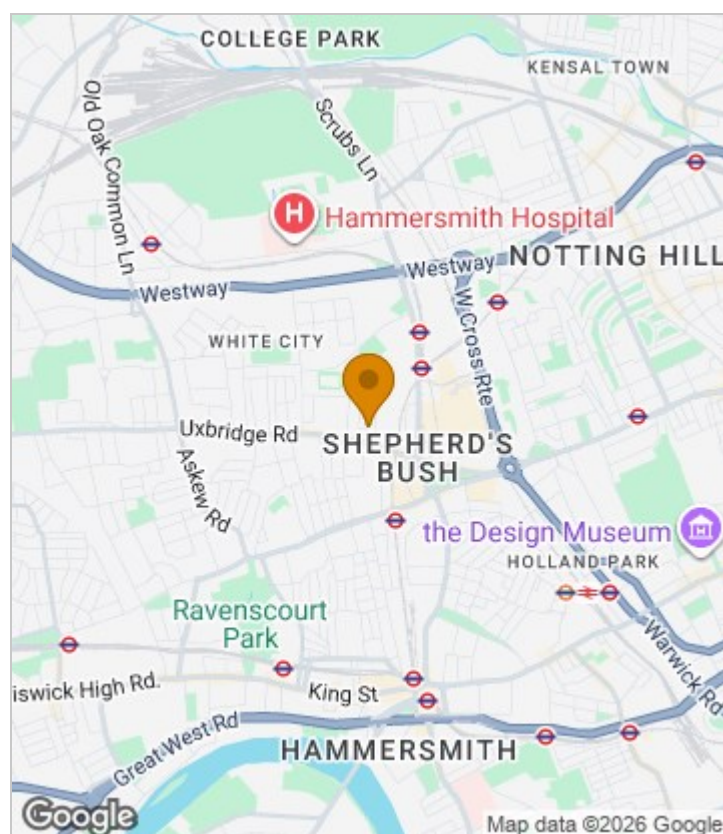
## Summary Description

Arlington House, Tunis Road, W12. CENTRAL LOCATION. A really well-proportioned three bedroom apartment on the first floor of this purpose built block in the centre of Shepherds Bush. The apartment offers great proportions throughout with a spacious reception room, fully fitted kitchen breakfast room, three bedrooms and a bathroom. [https://totalvista-my.sharepoint.com/:f:/g/person/alanaiken\\_totalvista\\_uk/IgAlbyGTRHFNm4k?e=7KhRpO](https://totalvista-my.sharepoint.com/:f:/g/person/alanaiken_totalvista_uk/IgAlbyGTRHFNm4k?e=7KhRpO)

The location offers ultra-convenience for all the shops, bars and restaurants on the Uxbridge Road, the Westfield shopping centre, John Lewis and the infamous Soho House members club. The location is extremely well served transport wise with the Hammersmith and City and Central Line tubes, Shepherds Bush Overground station and numerous bus routes in to Central London. For recreational use the lovely Hammersmith Park is located at the end of the road.

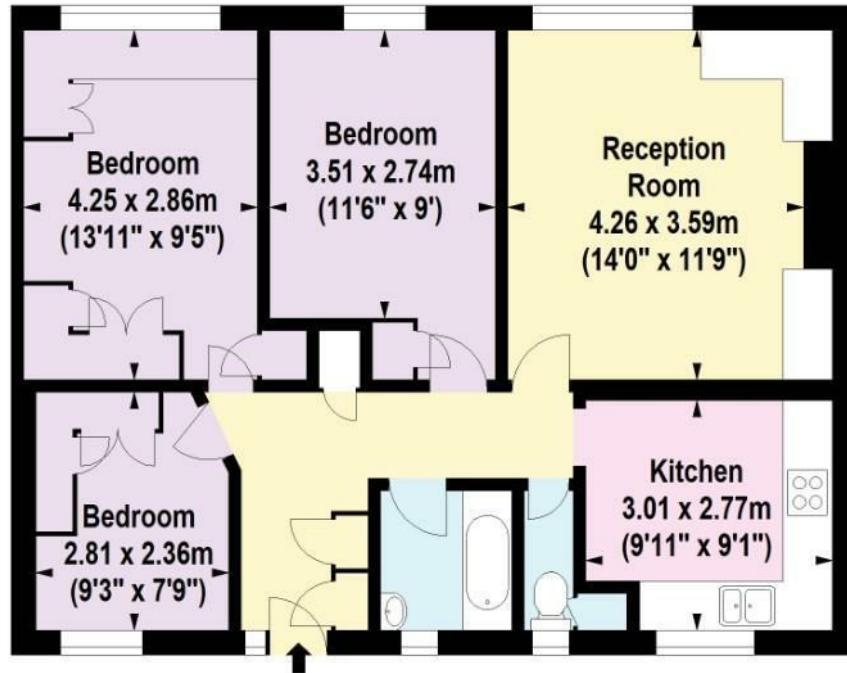
Leasehold TBC yrs, Service charge TBC pa, Ground Rent TBC pa

## Area Map





# Floor Plan



First Floor

For Identification Purposes Only. Not To Scale. © www.totalvista.uk 2026

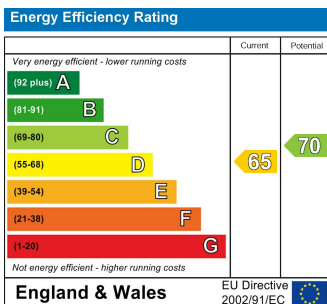


Arlington House, W12

Approx. Gross Internal Area  
71.44 Sq M - 769 Sq Ft



## Energy Efficiency Graph



## Viewing

Please contact our Sales SB Office on 0208 740 8740 if you wish to arrange a viewing appointment for this property or require further information.

- FIRST FLOOR FLAT
- SPACIOUS RECEPTION ROOM
- CENTRAL SHEPHERDS BUSH LOCATION
- HAMMERSMITH AND CITY TUBE
- GREAT PROPORTIONS
- THREE BEDROOMS
- CHAIN FREE
- SHORT WALK TO WESTFIELD WHITE CITY
- CENTRAL LINE TUBE
- PRIVATE BIKE STORE

For further information contact:

Sales SB, 234 Uxbridge Road, Shepherds Bush, London, W12 7JD

Tel: 0208 740 8740 Email: [enquiries@jorgensenturner.com](mailto:enquiries@jorgensenturner.com)

<https://www.jorgensenturner.com/>

### Disclaimer

These particulars, whilst believed to be accurate are set out as a general outline only for guidance and do not constitute any part of an offer or contract. Intending purchasers should not rely on them as statements of representation of fact, but must satisfy themselves by inspection or otherwise as to their accuracy. No person in this firm's employment has the authority to make or give any representation or warranty in respect of the property.