

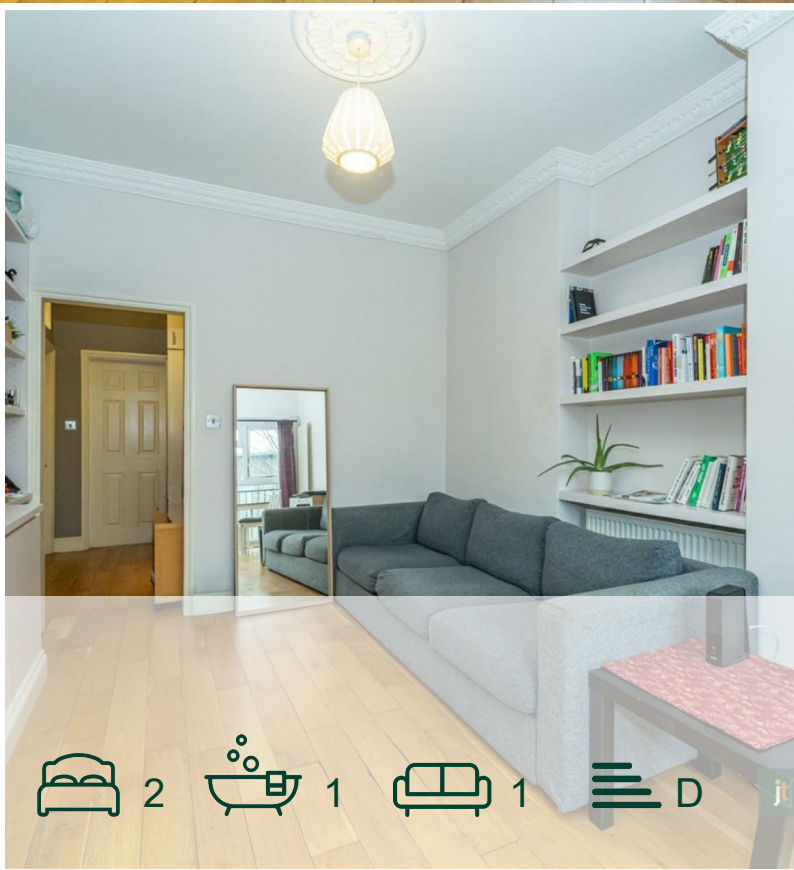


jt | JORGENSENTURNER



Frithville Gardens  
Shepherds Bush, W12

Asking Price £450,000



2 1 1 D

# Frithville Gardens Shepherds Bush, W12

Asking Price £450,000



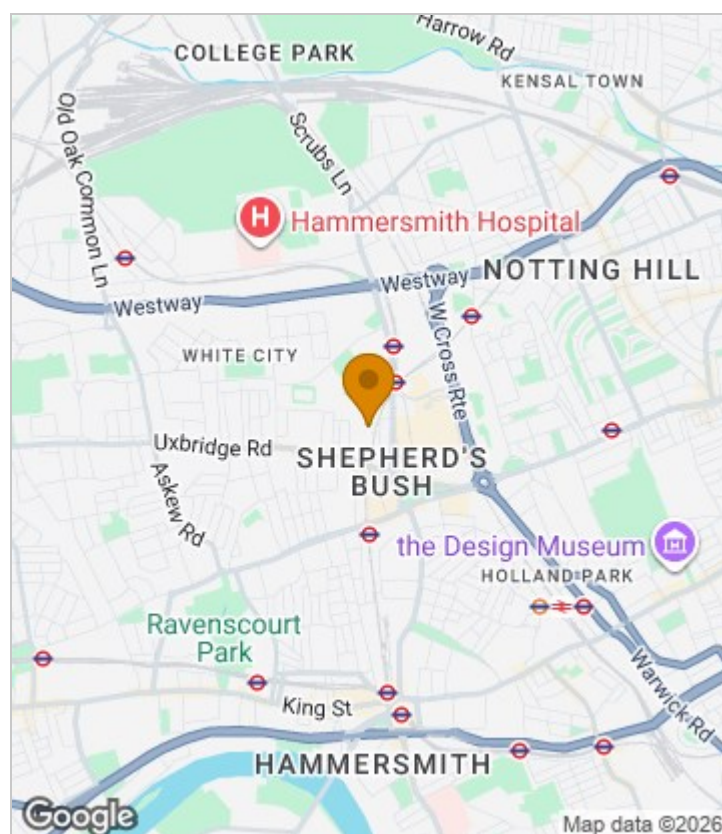
## Summary Description

Frithville Gardens W12. Set on the first floor of this attractive period building, this two bedroom is superbly located in the centre of Shepherds Bush. Internally, the property offers a spacious reception room with Juliet balcony, a fully fitted kitchen, two bedrooms and a shower room. The property further benefits from a share of the freehold and is offered chain free.

The location offers ultra-convenience for all the shops, bars and restaurants on the Uxbridge Road, the Westfield shopping centre, John Lewis and the infamous Soho House members club. The location is extremely well served transport wise with the Hammersmith and City and Central Line tubes, Shepherds Bush Overground station and numerous bus routes in to Central London. For recreational use the lovely Hammersmith Park is located at the end of the road.

Share of Freehold, Service Charge £900, Hammersmith and Fulham Band D

## Area Map

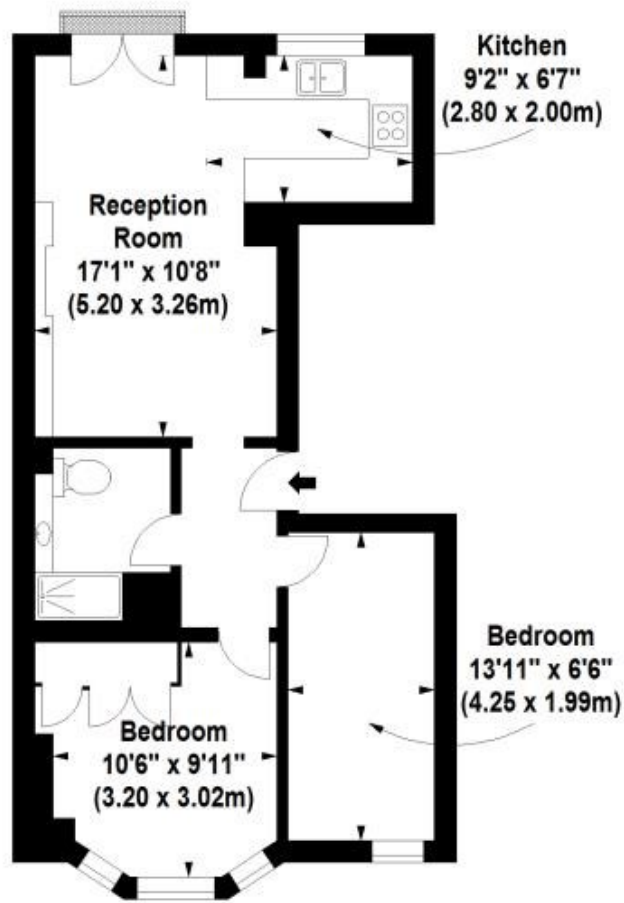




## Floor Plan

### Frithville Gardens, W12

Approx. Gross Internal Area \*  
523 Sq Ft - 48.59 Sq M

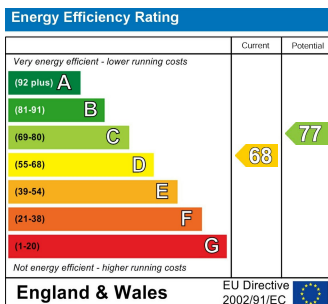


First Floor



Illustration For Identification Purposes Only. Not To Scale  
\*Floor Plans Drawn According To RICS Guidelines  
© www.alanaiken.com 2015

## Energy Efficiency Graph



## Viewing

Please contact our Sales SB Office on 0208 740 8740 if you wish to arrange a viewing appointment for this property or require further information.

- CENTRAL SHEPHERD'S BUSH
- CLOSE TO WHITE CITY CENTRAL LOCATION
- SHORT WALK TO THE TELEVISION CENTRE
- SHARE OF FREEHOLD
- FIRST FLOOR FLAT
- MOMENTS FROM WESTFIELD
- CLOSE TO WHITE CITY CENTRAL LINE TUBE
- TWO BEDROOMS
- GOOD CONDITION THROUGHOUT
- JULIET BALCONY
- MOMENTS FROM SOHO HOUSE WHITE CITY

For further information contact:

Sales SB, 234 Uxbridge Road, Shepherds Bush, London, W12 7JD

Tel: 0208 740 8740 Email: [enquiries@jorgensenturner.com](mailto:enquiries@jorgensenturner.com)

<https://www.jorgensenturner.com/>

### Disclaimer

These particulars, whilst believed to be accurate are set out as a general outline only for guidance and do not constitute any part of an offer or contract. Intending purchasers should not rely on them as statements of representation of fact, but must satisfy themselves by inspection or otherwise as to their accuracy. No person in this firm's employment has the authority to make or give any representation or warranty in respect of the property.