



# Mark Mansions Westville Road Shepherds Bush

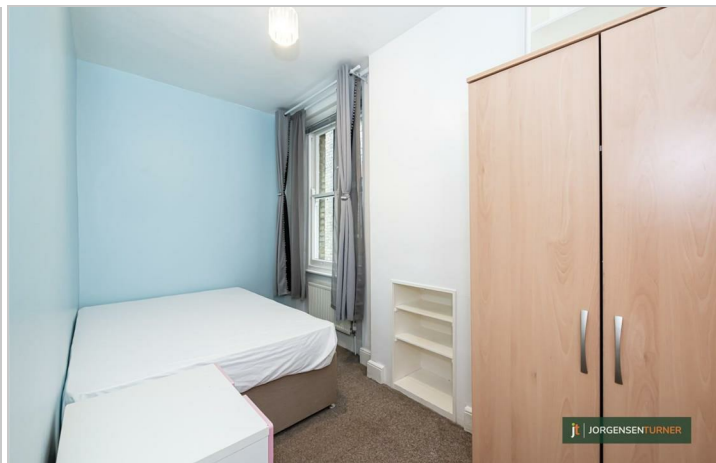
Asking Price £475,000





# Mark Mansions Westville Road Shepherd's Bush

Asking Price £475,000

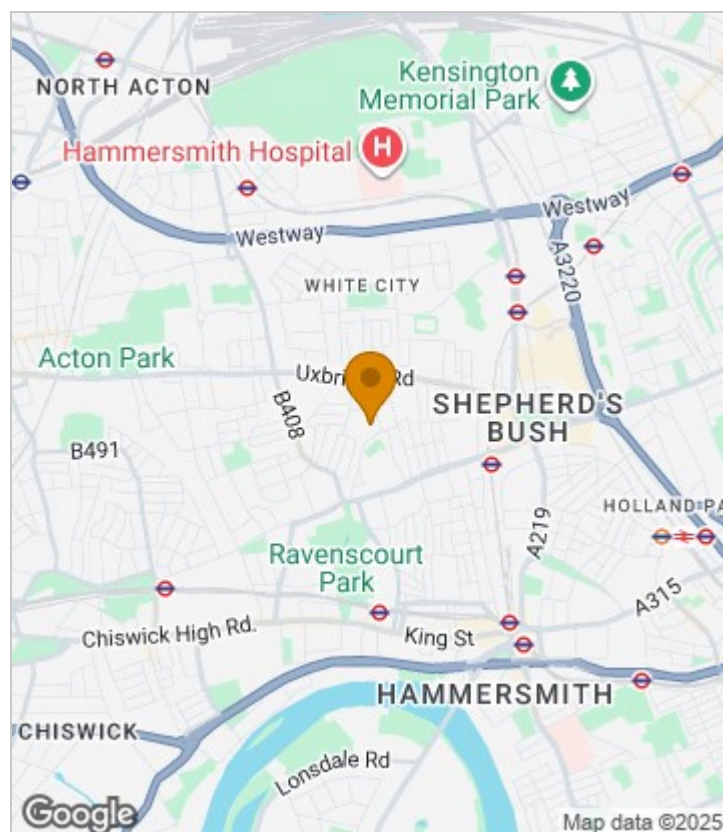


## Summary Description

Mark Mansions, W12. Attractive Edwardian mansion block on this quiet residential road. Set on the first floor, there's a spacious kitchen breakfast room to the rear overlooking the communal rear gardens, a three piece bathroom, two bedrooms to the middle and bright reception room to the front. To the rear of the block there's well-maintained communal gardens including cycle storage spaces and is offered with a share of freehold. Chain free.

Westville Road offers super convenience for all the amenities on offer in either Shepherd's Bush or Hammersmith. The property is only a short walk away from an abundance of local independent shops, bars and restaurants such as Gail's on Askew Road. The Westfield Shopping Centre is also within walking distance offering a multitude of retail experiences. Transport wise there are a number of excellent links at either Shepherd's Bush Market or Goldhawk Road (Hammersmith and City & Circle Lines), Shepherd's Bush.

## Area Map

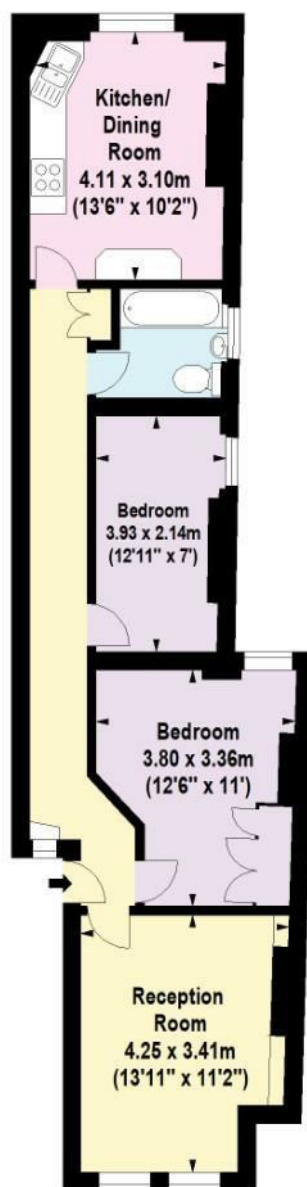








## Floor Plan



jt JORGENSEN TURNER

First Floor



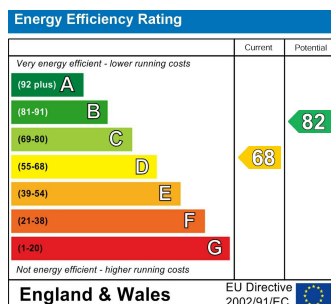
For Identification Purposes Only. Not To Scale. © www.totalvista.uk 2025

**Mark Mansions,  
Westville Road, W12**

Approx. Gross Internal Area  
63.45 Sq M - 683 Sq Ft

TOTALVISTA

## Energy Efficiency Graph



## Viewing

Please contact our Sales SB Office on 0208 740 8740 if you wish to arrange a viewing appointment for this property or require further information.

- ATTRACTIVE EDWARDIAN MANSION BLOCK
- TWO BEDROOMS
- FIRST FLOOR APARTMENT
- SPACIOUS RECEPTION ROOM
- HIGH CEILINGS
- COMMUNAL REAR GARDEN
- SHARE OF FREEHOLD
- CHAIN FREE

For further information contact:

Sales SB, 234 Uxbridge Road, Shepherds Bush, London, W12 7JD

Tel: 0208 740 8740 Email: [enquiries@jorgensenturner.com](mailto:enquiries@jorgensenturner.com)

<https://www.jorgensenturner.com/>

### Disclaimer

These particulars, whilst believed to be accurate are set out as a general outline only for guidance and do not constitute any part of an offer or contract. Intending purchasers should not rely on them as statements of representation of fact, but must satisfy themselves by inspection or otherwise as to their accuracy. No person in this firm's employment has the authority to make or give any representation or warranty in respect of the property.

