



jt | JORGENSENTURNER



Uxbridge Road, Shepherds  
Bush, W12

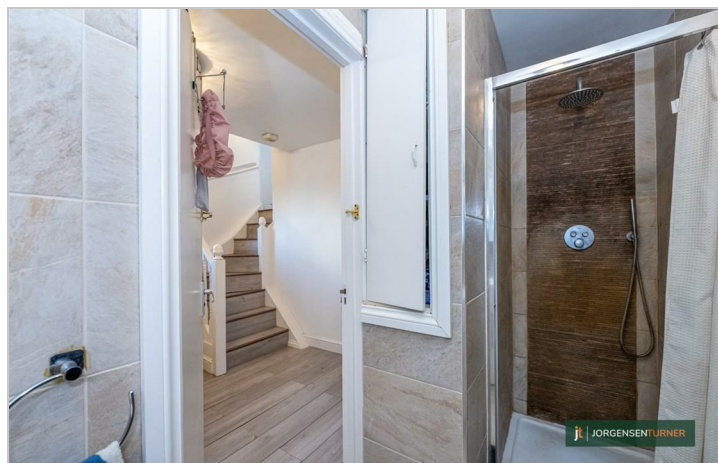
Asking Price £375,000



2 1 1 D

# Uxbridge Road, Shepherds Bush, W12

Asking Price £375,000



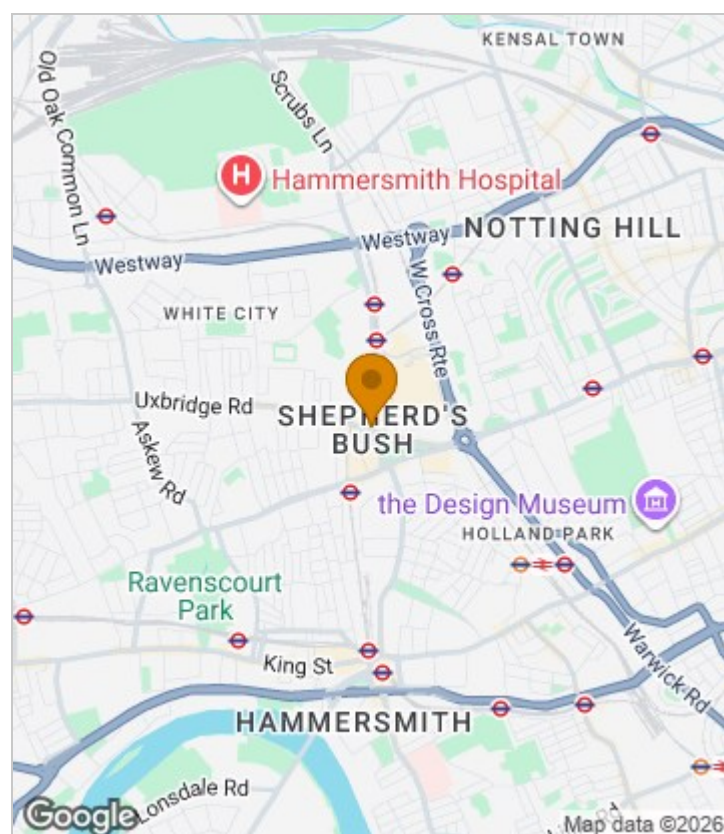
## Summary Description

**SUPER CENTRAL APARTMENT.** Set in the centre of Shepherds Bush this first floor apartment offers a spacious reception room with high ceilings, two good sized double bedrooms, a fully fitted kitchen and a shower room.

Situated in the centre of Shepherd's Bush, the location offers ultra-convenience for all the shops, bars and restaurants on the Uxbridge Road, the Westfield shopping centre, John Lewis and the infamous Soho House members club. The location is extremely well served transport wise with the Hammersmith and City and Central Line tubes, Shepherd's Bush Overground station and numerous bus routes in to Central London. For recreational use, the lovely Hammersmith and Wormholt Parks are only a short walk away.

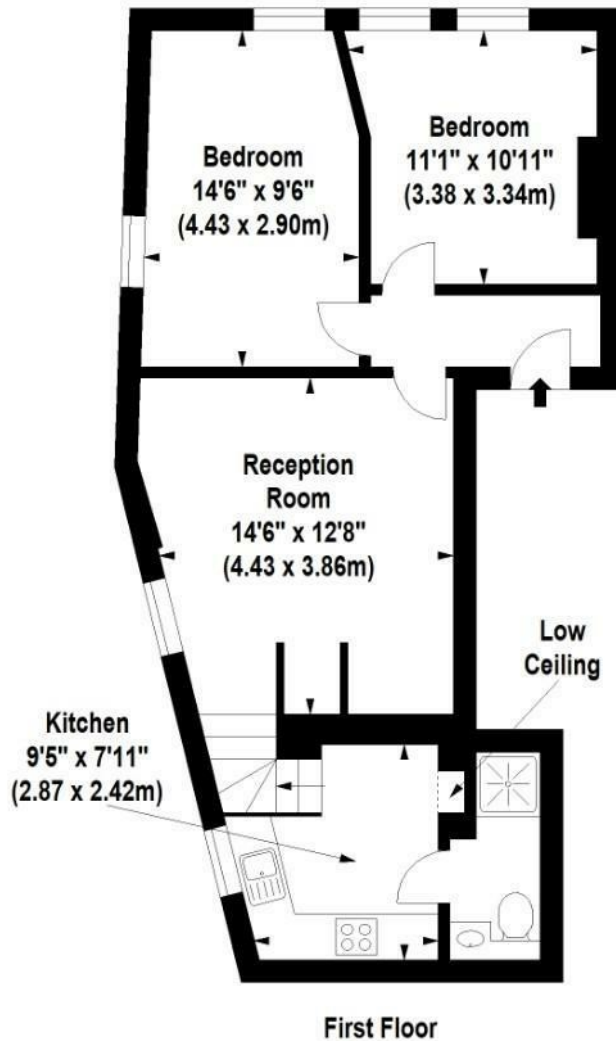
Leasehold 111 years unexpired, Service Charge £1,052.44. GR £250.

## Area Map





# Floor Plan



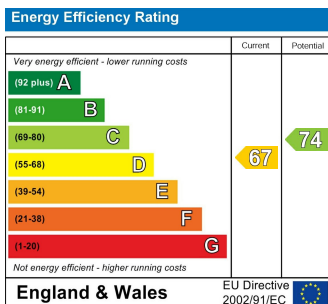
For Identification Purposes Only. Not To Scale. © www.totalvista.uk 2025

Uxbridge Road, W12

Approx. Gross Internal Area  
57.32 Sq M - 617 Sq Ft



## Energy Efficiency Graph



## Viewing

Please contact our Sales SB Office on 0208 740 8740 if you wish to arrange a viewing appointment for this property or require further information.

- SUPER CENTRAL LOCATION
- TWO BEDROOMS
- MOMENTS FROM THE WESTFIELD CENTRE
- CLOSE TO HAMMERSMITH AND CITY LINE TUBE
- CLOSE TO CENTRAL LINE TUBE
- APPROX 617 SQ FT
- SPLIT LEVEL
- FIRST FLOOR APARTMENT

For further information contact:

Sales SB, 234 Uxbridge Road, Shepherds Bush, London, W12 7JD

Tel: 0208 740 8740 Email: [enquiries@jorgensenturner.com](mailto:enquiries@jorgensenturner.com)

<https://www.jorgensenturner.com/>

### Disclaimer

These particulars, whilst believed to be accurate are set out as a general outline only for guidance and do not constitute any part of an offer or contract. Intending purchasers should not rely on them as statements of representation of fact, but must satisfy themselves by inspection or otherwise as to their accuracy. No person in this firm's employment has the authority to make or give any representation or warranty in respect of the property.