



jt | JORGENSENTURNER



Oaklands Grove, London,
W12 0JE

Asking Price £800,000



3 2 2 D

Oaklands Grove, London, W12 0JE

Asking Price £800,000



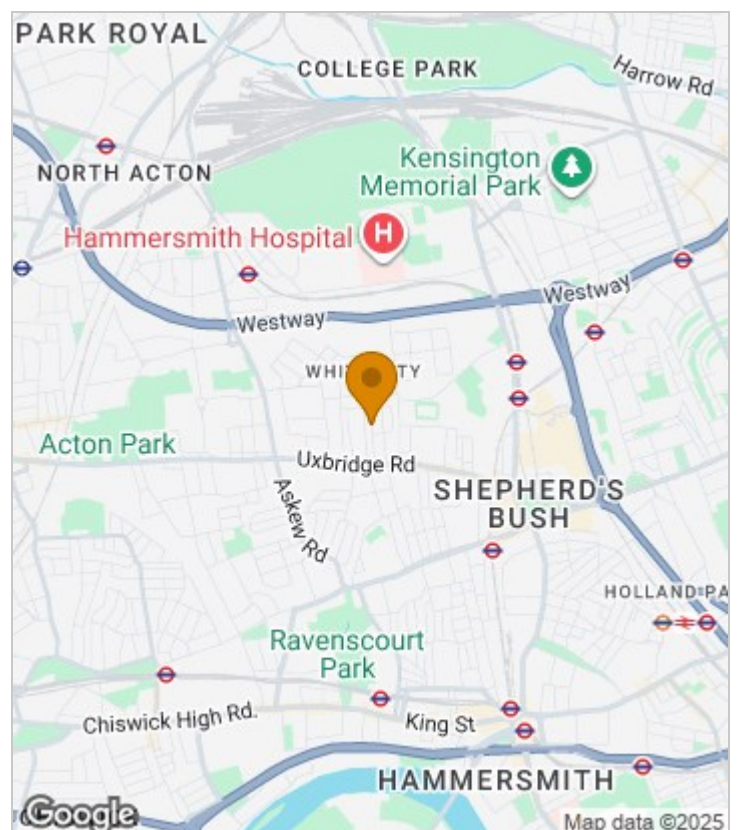
Summary Description

OAKLANDS GROVE W12. A three bedroom family home in the popular Groves area of Shepherd's Bush. Set over three floors with the potential to extend the loft further. The ground floor offers two reception rooms and a separate kitchen. The first floor offers two double bedrooms (one with an en-suite shower room) and a family bathroom. The main bedroom occupies the second floor of the house. The property benefits from a private West facing garden to the rear.

The location offers ultra-convenience for all the shops, bars and restaurants on the Uxbridge Road, the Westfield shopping centre, John Lewis and the infamous Soho House members club. The location is extremely well served transport wise with the Hammersmith and City and Central Line tubes, Shepherd's Bush Overground station and numerous bus routes in to Central London. For Schools, St Stephen's Primary School (rated outstanding) is only a short walk from the property.

Freehold, Hammersmith and Fulham, Council Tax Band E

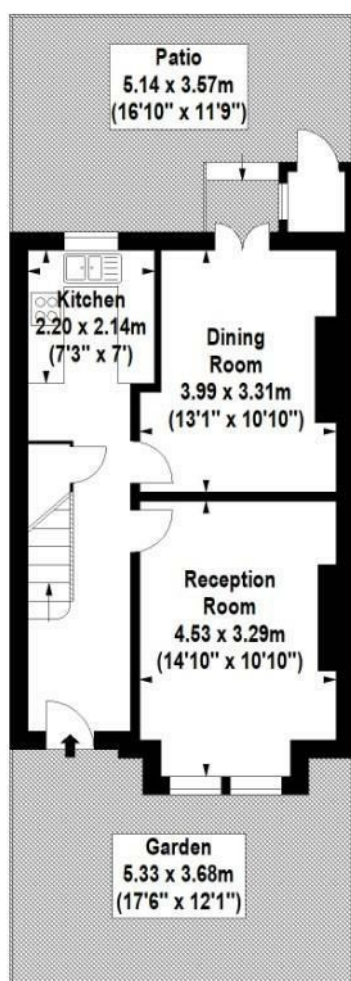
Area Map



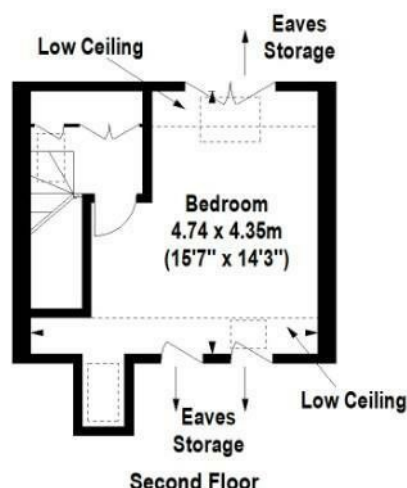


Floor Plan

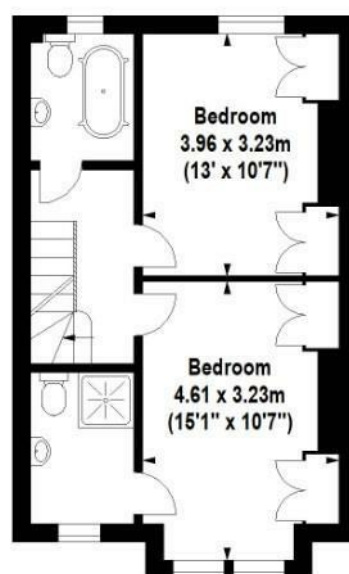
jt | JORGENSEN TURNER



Ground Floor



Second Floor



First Floor



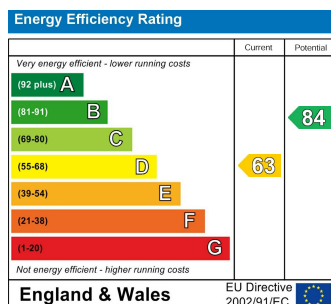
For Identification Purposes Only. Not To Scale. © www.totalvista.uk 2025

Oaklands Grove, W12

Approx. Gross Internal Area
106.37 Sq M - 1145 Sq Ft

TOTALVISTA

Energy Efficiency Graph



Viewing

Please contact our Sales SB Office on 0208 740 8740 if you wish to arrange a viewing appointment for this property or require further information.

- QUIET RESIDENTIAL ROAD
- TWO BEDROOM FAMILY HOME
- TWO BATHROOMS
- TWO RECEPTION ROOMS
- POTENTIAL TO IMPROVE
- POPULAR "GROVES" AREA
- CLOSE TO LOCAL AMENITIES
- SHORT WALK TO ST STEPHEN'S SCHOOL
- CLOSE TO WORMHOLT PARK
- CENTRAL OR HAMMERSMITH AND CITY LINE

For further information contact:

Sales SB, 234 Uxbridge Road, Shepherd's Bush, London, W12 7JD

Tel: 0208 740 8740 Email: enquiries@jorgensenturner.com

<https://www.jorgensenturner.com/>

Disclaimer

These particulars, whilst believed to be accurate are set out as a general outline only for guidance and do not constitute any part of an offer or contract. Intending purchasers should not rely on them as statements of representation of fact, but must satisfy themselves by inspection or otherwise as to their accuracy. No person in this firm's employment has the authority to make or give any representation or warranty in respect of the property.

