



jt | JORGENSENTURNER



Jeddo Road, Shepherds  
Bush

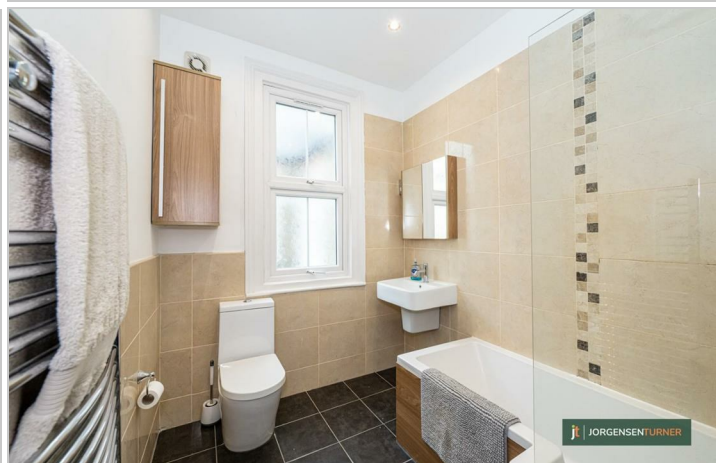
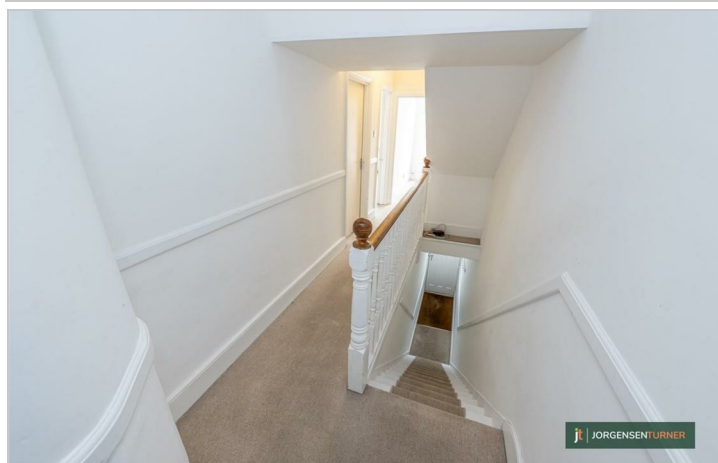
Asking Price £745,000



3 2 1 C

# Jeddo Road, Shepherds Bush

Asking Price £745,000



## Summary Description

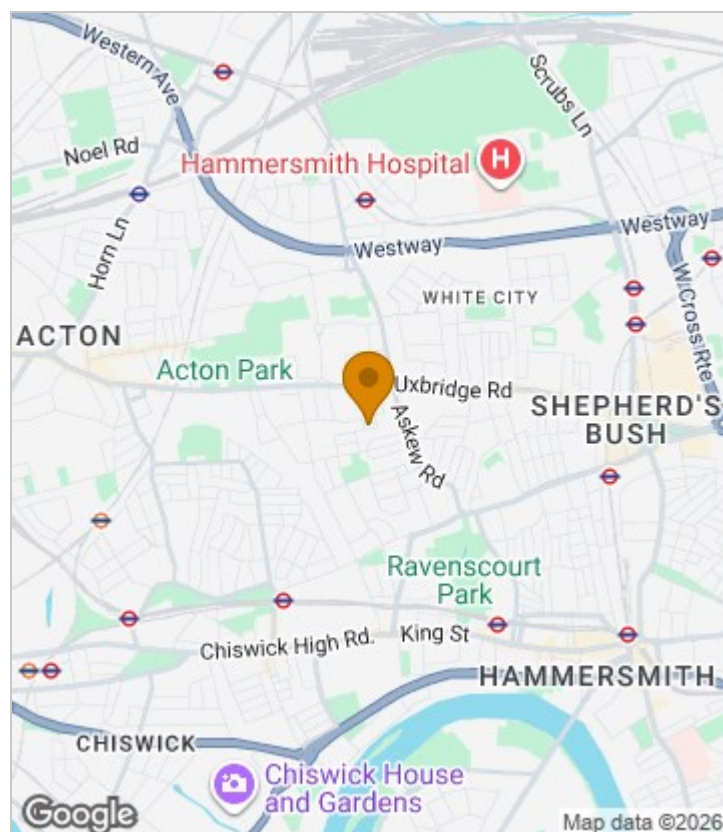
Jeddo Road, W12. One of the larger properties on the road, this three-bedroom split-level maisonette occupies the first and second floors of a charming Edwardian building with original period fireplaces. The home is flooded with natural light and offers well-balanced living space throughout. To the front, there is a bright and inviting reception room providing ample space for both relaxing and entertaining. To the rear, a spacious kitchen/dining room provides a welcoming setting for everyday living. The accommodation further comprises an en-suite master bedroom with two further bedrooms, a modern family bathroom, and a large loft room with natural light and heating, making it ideal for families or those seeking flexible home-working space. The property offers access to a private section of the rear garden and pedestrian access via the rear gate.

Jeddo Road is a quiet, tree-lined residential street positioned close to Wendell Park and Askew Village. Residents enjoy an excellent selection of independent cafés, shops and restaurants along Askew Road, while the extensive retail and leisure facilities of Westfield White City are within easy reach. Wendell School and the open green spaces of Wendell Park are just a short walk away, and numerous bus routes along Uxbridge Road and Askew Road provide convenient connections to Shepherd's Bush and Hammersmith.

Chain free | Share of Freehold | 959-year lease | Ealing Council Tax Band D | EPC C

To arrange a viewing, please contact Jorgensen Turner Shepherd's Bush.

## Area Map





# Floor Plan



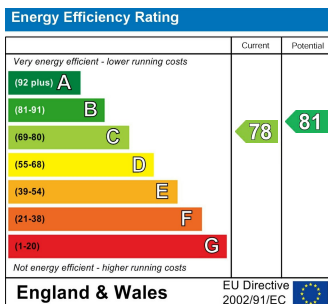
For Identification Purposes Only. Not To Scale. © www.totalvista.uk 2026

Jeddo Road, W12

Approx. Gross Internal Area 123.19 Sq M - 1326 Sq Ft  
(Excluding Eaves Storage)  
Eaves Storage Area 9.10 Sq M - 98 Sq Ft



## Energy Efficiency Graph



## Viewing

Please contact our Sales SB Office on 0208 740 8740 if you wish to arrange a viewing appointment for this property or require further information.

- 3 BEDROOMS
- CHAIN FREE
- SHARE OF FREEHOLD
- LONG LEASE
- CLOSE TO ASKEW ROAD
- SPLIT-LEVEL MAISONETTE
- SHORT WALK TO WENDELL PARK
- GARDEN

For further information contact:

Sales SB, 234 Uxbridge Road, Shepherds Bush, London, W12 7JD

Tel: 0208 740 8740 Email: enquiries@jorgensenturner.com

<https://www.jorgensenturner.com/>

### Disclaimer

These particulars, whilst believed to be accurate are set out as a general outline only for guidance and do not constitute any part of an offer or contract. Intending purchasers should not rely on them as statements of representation of fact, but must satisfy themselves by inspection or otherwise as to their accuracy. No person in this firm's employment has the authority to make or give any representation or warranty in respect of the property.