



jt | JORGENSENTURNER



Denham House, White  
City, W12

£2,350 Per Month



3



1



1



C



# Denham House, White City, W12

£2,350 Per Month



## Summary Description

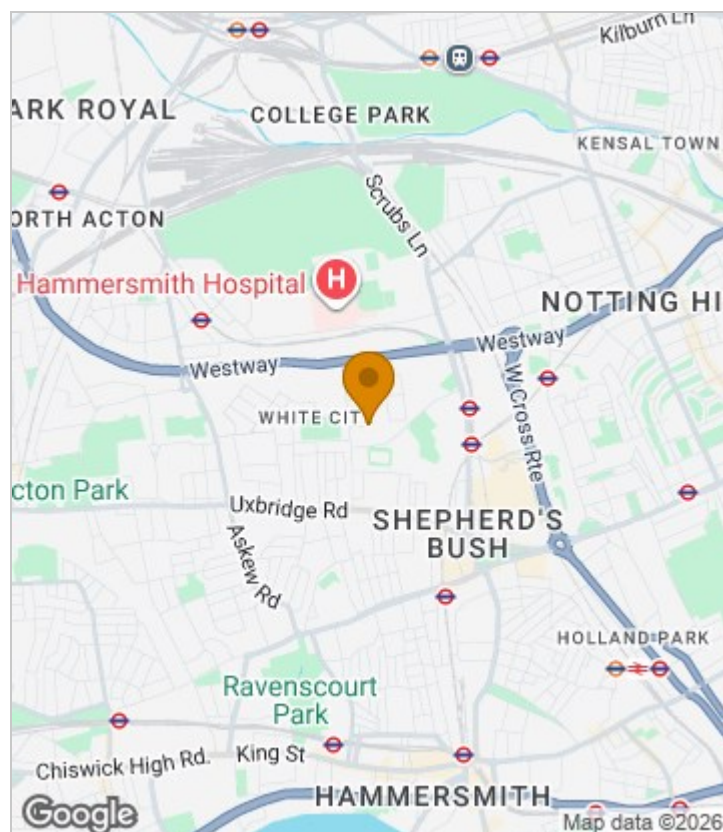
**\*\*PERFECT FOR SHARERS OR A FAMILY \*\***

Jorgensen Turner estate agents Shepherds Bush are pleased to offer a superb spacious purpose built flat in the heart of White City located moments from various transport links. The flat comprises of three double bedrooms, lounge with dining area, separate kitchen and bathroom with separate WC. This property is situated within a few minutes walk to White City Central line station and Shepherds Bush Hammersmith & City line station. It is offered to the market furnished and is available from Mid July. Early viewings highly recommended.

Council Tax Band: B - H&F

Deposit: A holding deposit of 1 weeks rent will be required to secure the property and a Security deposit of 5 weeks rent (for rents under £50,000 pa) or 6 weeks (for rents over £50,000 pa)

## Area Map

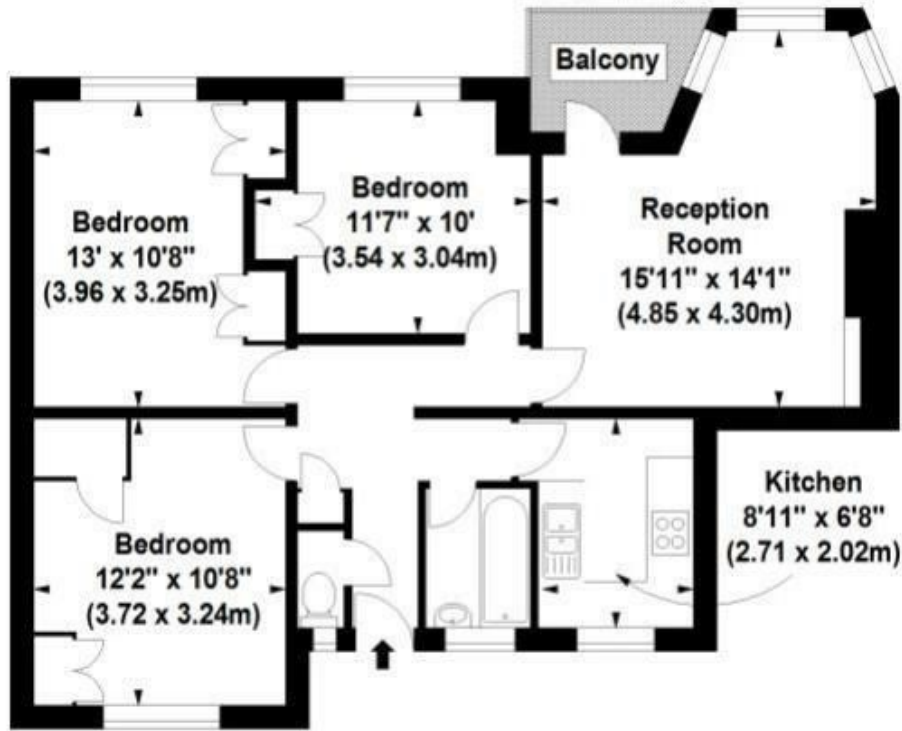




## Floor Plan

### Denham House, W2

Approx. Gross Internal Area \*  
751 Sq Ft - 69.77 Sq M

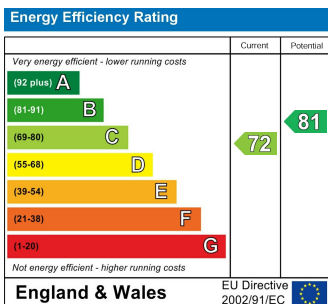


First Floor



Illustration For Identification Purposes Only. Not To Scale  
\*Floorplan Drawn According To RICS Guidelines  
© www.alanaiken.com 2015

## Energy Efficiency Graph



## Viewing

Please contact our Lettings SB Office on 0208 740 8740 if you wish to arrange a viewing appointment for this property or require further information.

- Three double bedroom flat
- Spacious reception room
- Private balcony
- White City (Central Line Tube)
- First floor purpose built block with a lift
- Offered furnished
- Close to Imperial College White city

For further information contact:

Lettings SB, 234 Uxbridge Road, Shepherds Bush, London, W12 7JD

Tel: 0208 740 8740 Email: [enquiries@jorgensenturner.com](mailto:enquiries@jorgensenturner.com)

<https://www.jorgensenturner.com/>

### Disclaimer

These particulars, whilst believed to be accurate are set out as a general outline only for guidance and do not constitute any part of an offer or contract. Intending purchasers should not rely on them as statements of representation of fact, but must satisfy themselves by inspection or otherwise as to their accuracy. No person in this firm's employment has the authority to make or give any representation or warranty in respect of the property.