



jt | JORGENSENTURNER



White City Close, White
City, London, W12

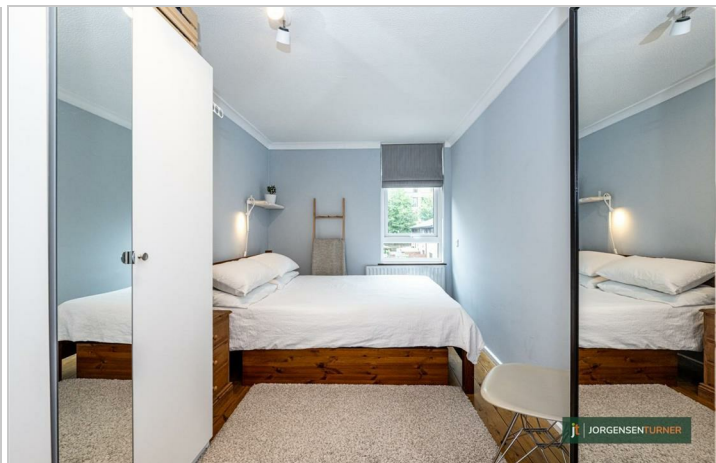
£2,350 Per Month



 2  1  1  D

White City Close, White City, London, W12

£2,350 Per Month



Summary Description

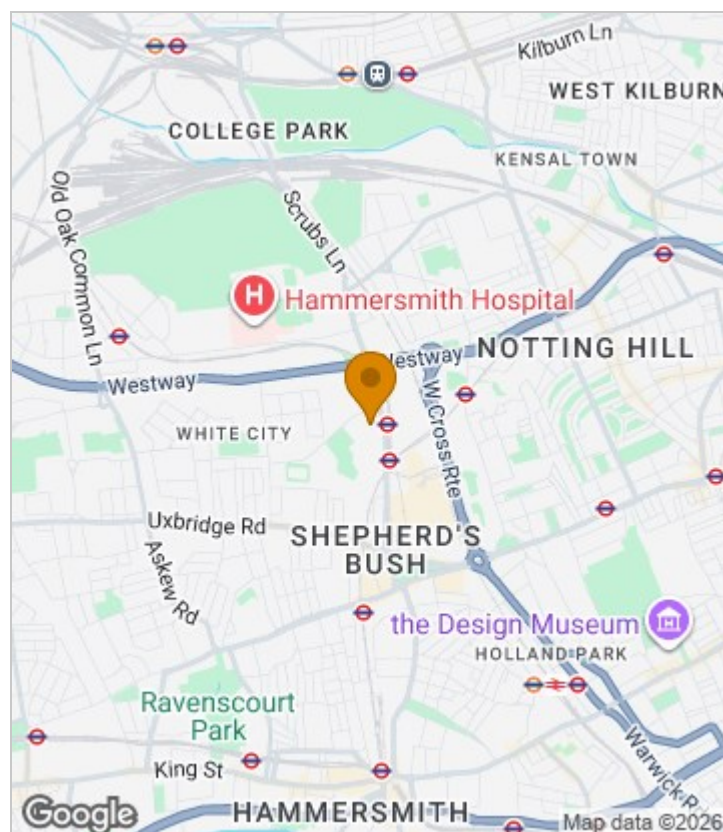
****NEW TO THE MARKET**** Jorgensen Turner are pleased to offer this wonderful two double bedroom split level property with a private garden just moments from Wood Lane and White City Tube stations. Perfect for a small family, two professional sharers or a couple wanting a home office or guest bedroom. This lovely property is perfectly located close to Imperial College White City, Soho House and Westfield White City.

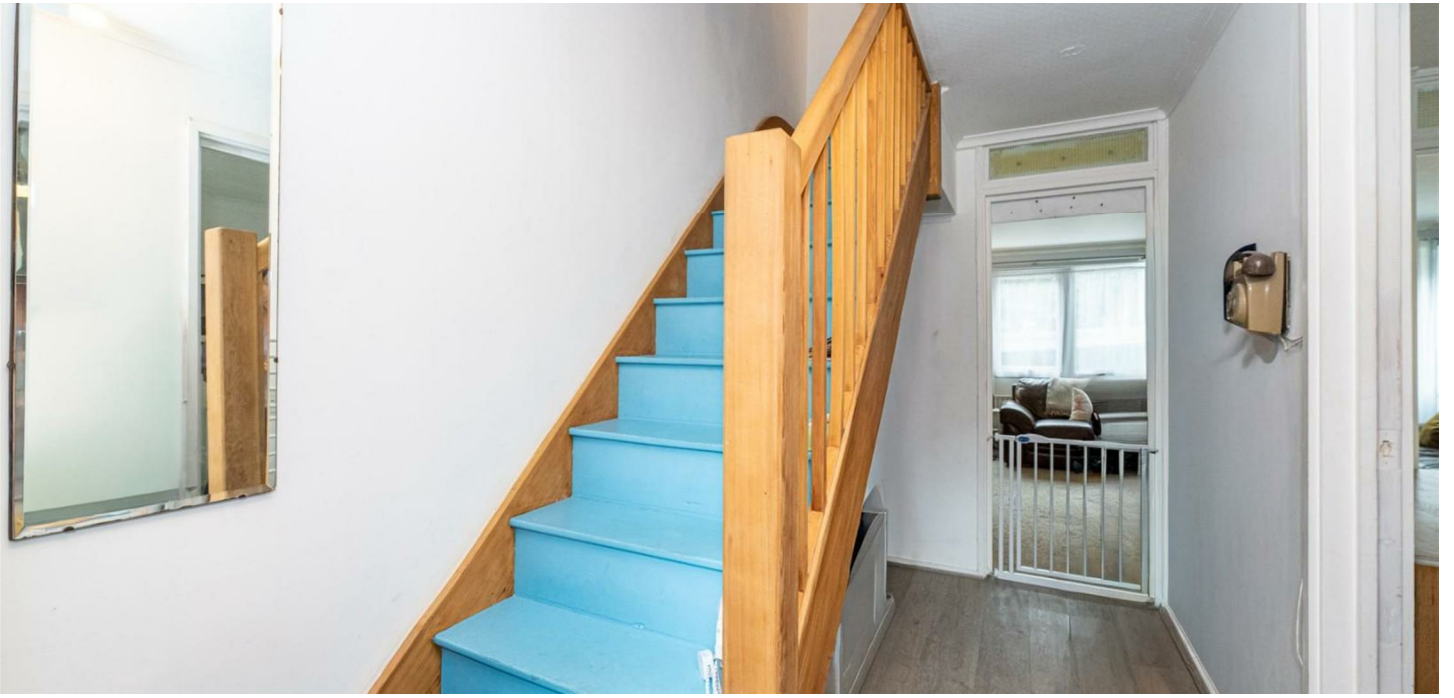
Available 20th September, this flat is offered unfurnished and is in very good condition throughout. Call now to arrange a viewing. Early viewings are highly recommended.

Council Tax Band C—Hammersmith & Fulham.

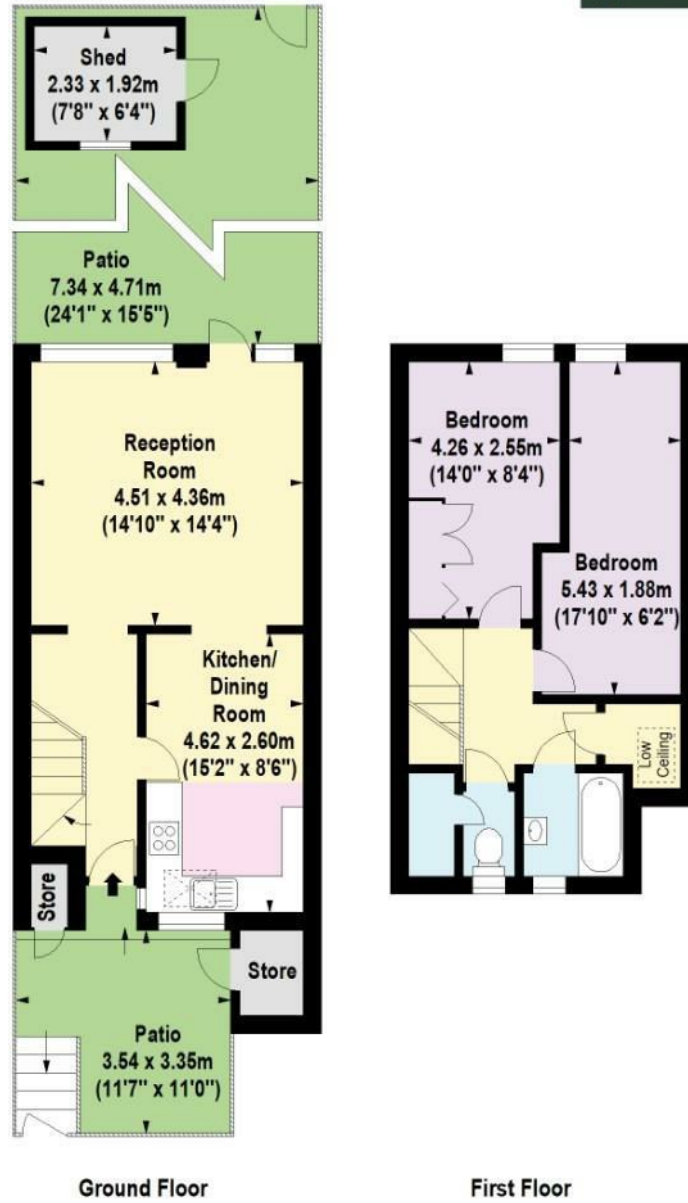
Deposit: One week's rent to reserve, with a security deposit of either 5 weeks' rent (for properties under £50,000pa) or 6 weeks' rent (for those over £50,000pa).

Area Map





Floor Plan



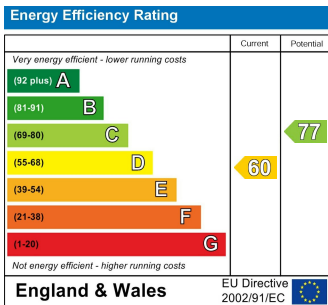
For Identification Purposes Only. Not To Scale. © www.totalvista.uk 2025

White City Close, W12

Approx. Gross Internal Area 76.18 Sq M - 820 Sq Ft
(Excluding Shed & Store)
Shed & Store Area 6.60 Sq M - 71 Sq Ft



Energy Efficiency Graph



Viewing

Please contact our Lettings SB Office on 0208 740 8740 if you wish to arrange a viewing appointment for this property or require further information.

- Two double bedrooms
- private garden
- Spilt level property
- Moment from Wood Lane and White City Tube stations
- Available 20th September 2025
- Unfurnished
- Popular Central location

For further information contact:

Lettings SB, 234 Uxbridge Road, Shepherds Bush, London, W12 7JD

Tel: 0208 740 8740 Email: enquiries@jorgensenturner.com

<https://www.jorgensenturner.com/>

Disclaimer

These particulars, whilst believed to be accurate are set out as a general outline only for guidance and do not constitute any part of an offer or contract. Intending purchasers should not rely on them as statements of representation of fact, but must satisfy themselves by inspection or otherwise as to their accuracy. No person in this firms employment has the authority to make or give any representation or warranty in respect of the property.