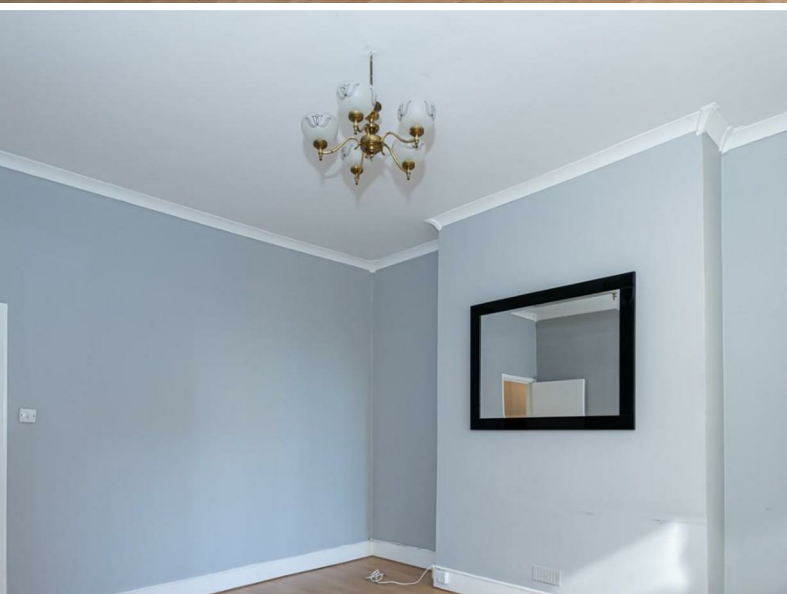




jt | JORGENSENTURNER



Uxbridge Road, Shepherds
Bush, W12

£2,000 Per Month



2



1



1

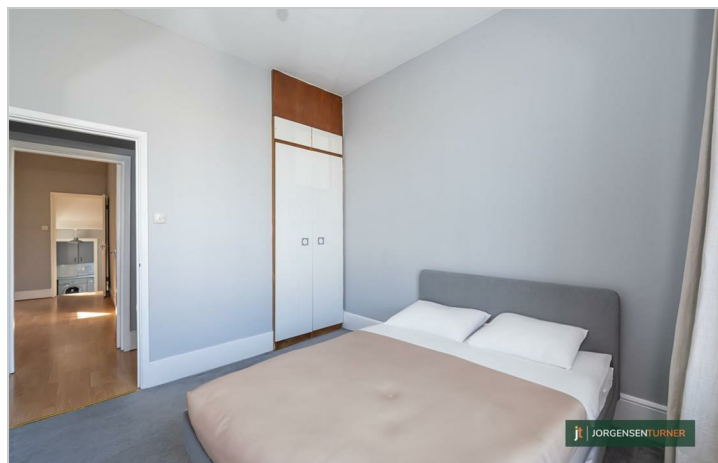


D



Uxbridge Road, Shepherds Bush, W12

£2,000 Per Month



Summary Description

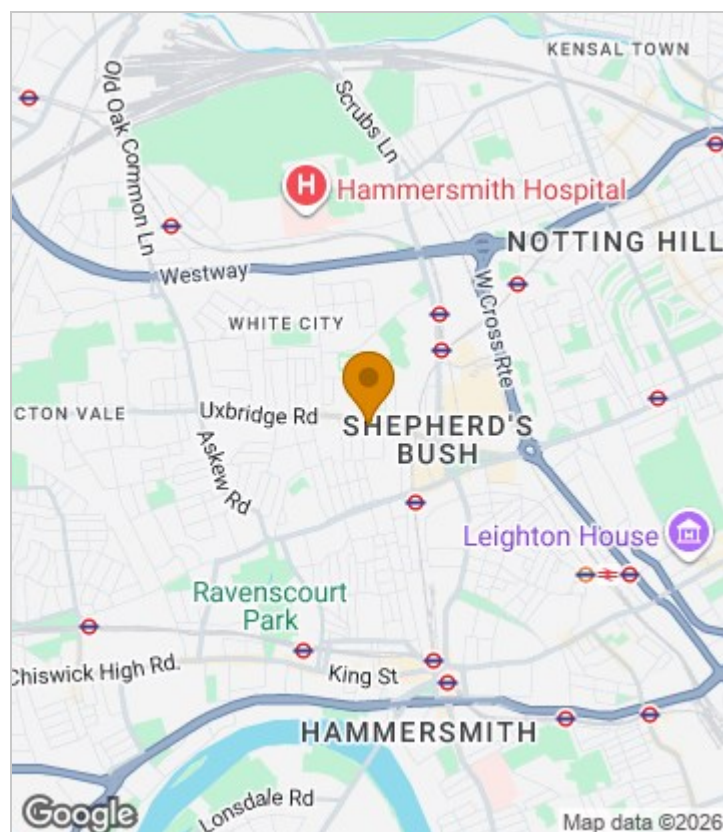
****NEW TO THE MARKET**** Two double bedroom split level flat in the heart of Shepherds Bush. The spacious flat has a large living room and a separate kitchen. Only Minutes away from Shepherds Bush market tube station and Westfield White City. Offered in good condition throughout, a must see property.

Available NOW.

Council Tax Band: D - H&F

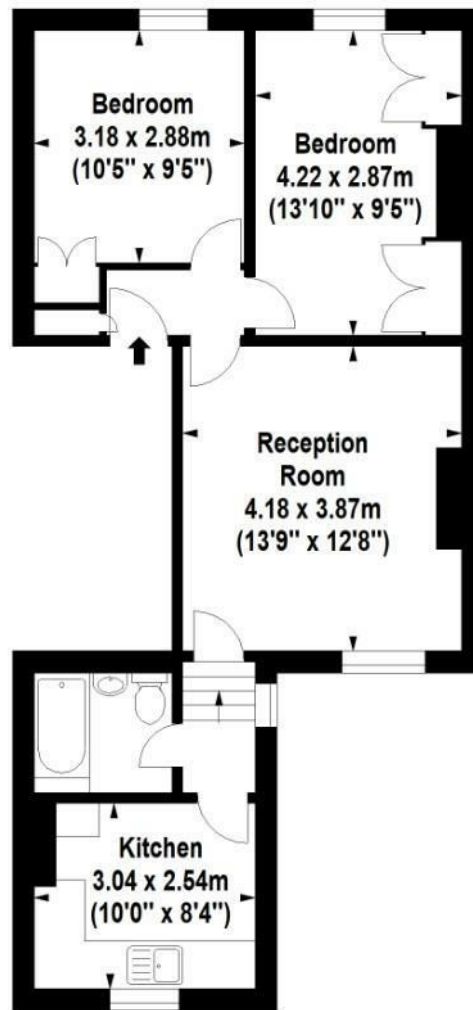
A holding deposit of 1 weeks rent will be required to secure the property and a Security deposit of 5 weeks rent (for rents under £50,000 pa) or 6 weeks (for rents over £50,000 pa)

Area Map





Floor Plan



First Floor



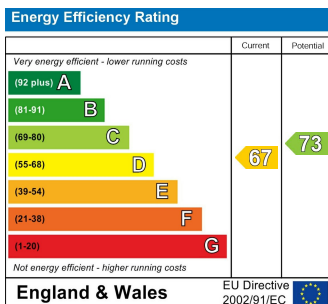
For Identification Purposes Only. Not To Scale. © www.totalvista.uk 2025

Uxbridge Road, W12

Approx. Gross Internal Area
55.09 Sq M - 593 Sq Ft



Energy Efficiency Graph



Viewing

Please contact our Lettings SB Office on 0208 740 8740 if you wish to arrange a viewing appointment for this property or require further information.

- TWO DOUBLE BEDROOMS
- BRIGHT AND AIRY
- CLOSE TO AMENTIES, CAFES AND SHOPS
- LARGE LIVING ROOM
- CLOSE TO MULTIPLE TUBE STATIONS
- AVAILABLE NOW

For further information contact:

Lettings SB, 234 Uxbridge Road, Shepherds Bush, London, W12 7JD

Tel: 0208 740 8740 Email: enquiries@jorgensenturner.com

<https://www.jorgensenturner.com/>

Disclaimer

These particulars, whilst believed to be accurate are set out as a general outline only for guidance and do not constitute any part of an offer or contract. Intending purchasers should not rely on them as statements of representation of fact, but must satisfy themselves by inspection or otherwise as to their accuracy. No person in this firm's employment has the authority to make or give any representation or warranty in respect of the property.