



High Street, Acton, W3

£1,975 Per Month



 2  1  1  E

High Street, Acton, W3

£1,975 Per Month



Summary Description

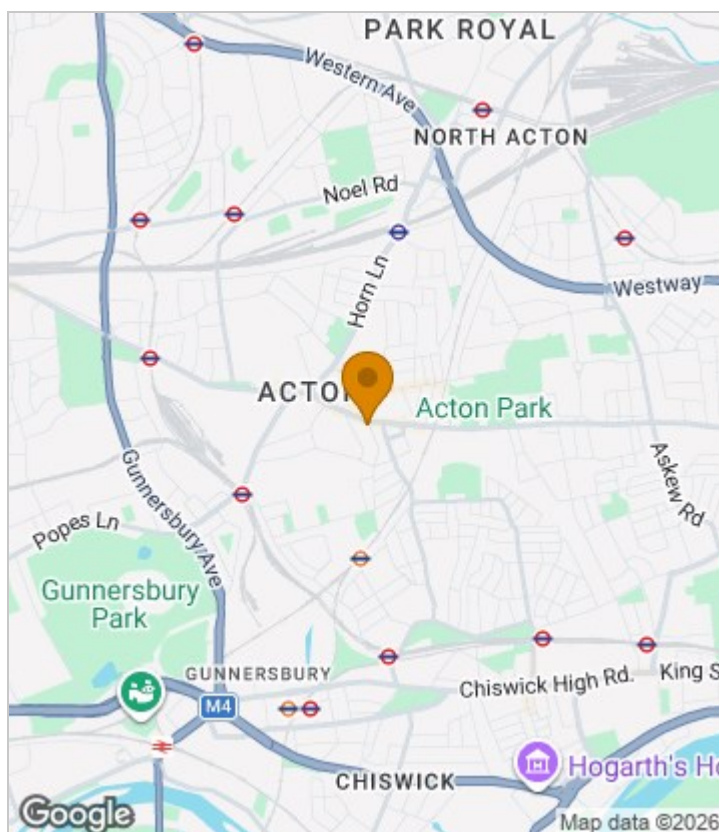
****NEW TO THE MARKET**** Jorgensen Turner are pleased to offer this modern two double bedroom flat in the heart of Acton. Situated in a gated development of only 4 flats. Offered in very good condition throughout this stunning flat can be furnished or part-furnished and available NOW.

Moments from multiple public transport options, The Oaks Shopping centre and a verity of cafes and restaurants that Acton High Street has to offer.

Council tax band: C Ealing borough

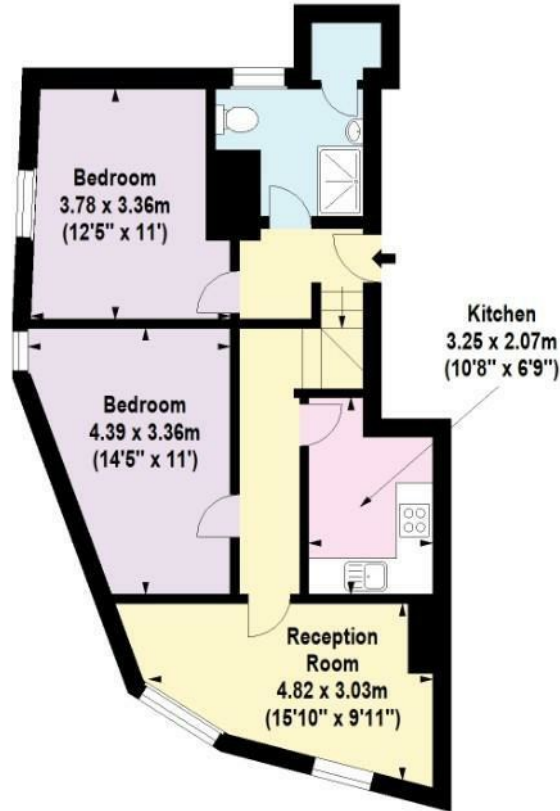
Deposit: One weeks' rent to reserve, with a security deposit of either 5 weeks' rent (for properties under £50,000pa) or 6 weeks' rent (for those over £50,000pa).

Area Map





Floor Plan



Second Floor

For Identification Purposes Only. Not To Scale. © www.totalvista.uk 2026

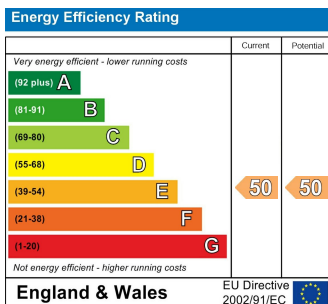


High Street, W3

Approx. Gross Internal Area
59.73 Sq M - 643 Sq Ft



Energy Efficiency Graph



Viewing

Please contact our Lettings SB Office on 0208 740 8740 if you wish to arrange a viewing appointment for this property or require further information.

- Two double bedrooms
- Modern and stylish
- Furnished or part-furnished
- Very good condition throughout
- Gated development
- Central Acton location
- Separate modern kitchen
- Modern shower suite

For further information contact:

Lettings SB, 234 Uxbridge Road, Shepherds Bush, London, W12 7JD

Tel: 0208 740 8740 Email: enquiries@jorgensenturner.com

<https://www.jorgensenturner.com/>

Disclaimer

These particulars, whilst believed to be accurate are set out as a general outline only for guidance and do not constitute any part of an offer or contract. Intending purchasers should not rely on them as statements of representation of fact, but must satisfy themselves by inspection or otherwise as to their accuracy. No person in this firm's employment has the authority to make or give any representation or warranty in respect of the property.