



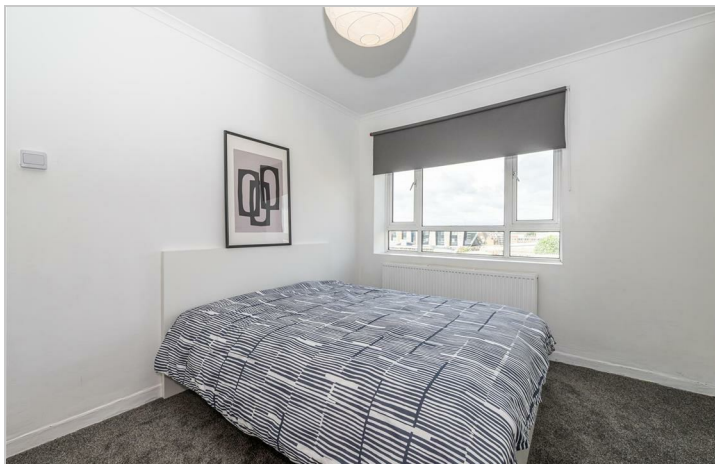
Auckland House, White
City Estate, W12

£1,950 Per Month



Auckland House, White City Estate, W12

£1,950 Per Month



Summary Description

****AVAILABLE NOW**** Jorgensen Turner are pleased to present this wonderful two double bedroom flat.

On the edge of White City Estate this property is modern and stylish and offers great living space and comes furnished.

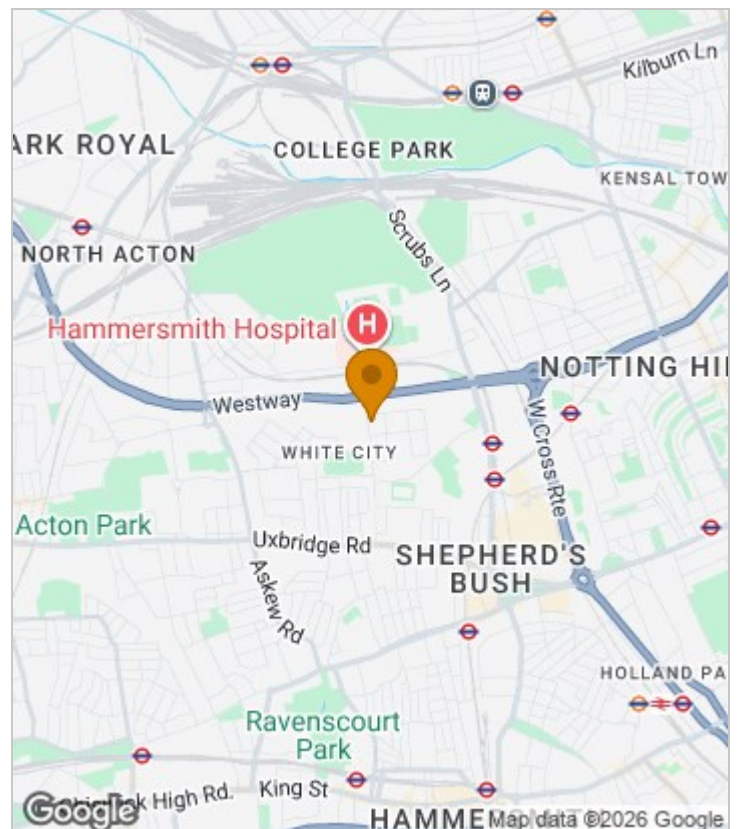
Auckland House is ideally positioned just a short walk from the vibrant heart of Shepherd's Bush, offering an extensive selection of shops, cafés, bars, and restaurants, as well as the renowned Westfield, White City shopping centre. Excellent transport links are available nearby, including White City Station (Central Line) and Shepherd's Bush Market (Hammersmith & City Line). There are also multiple bus routes along Uxbridge Road and Wood Lane, along with quick access to the A40 for motorists

****Please note this property is on the fourth floor with no lift access****

Council Tax Band A—Hammersmith & Fulham.

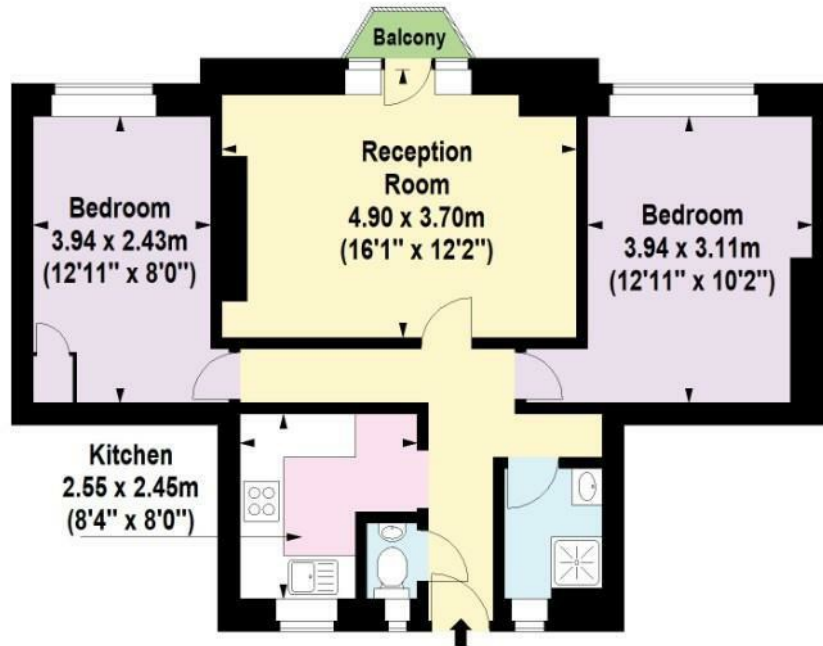
Deposit: One weeks' rent to reserve, with a security deposit of either 5 weeks' rent (for properties under £50,000pa) or 6 weeks' rent (for those over £50,000pa).

Area Map





Floor Plan



Fourth Floor

For Identification Purposes Only. Not To Scale. © www.totalvista.uk 2026

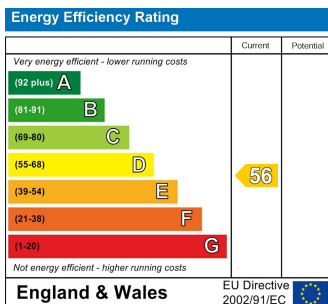


Auckland House, W12

Approx. Gross Internal Area
57.13 Sq M - 615 Sq Ft



Energy Efficiency Graph



Viewing

Please contact our Lettings SB Office on 0208 740 8740 if you wish to arrange a viewing appointment for this property or require further information.

- Two double bedroom
- Great west facing views
- Close to Hammersmith
- Walking distance to multiple hospital, Television centre, tube stations
- Westfield White city
- Furnished
- White City location

For further information contact:

Lettings SB, 234 Uxbridge Road, Shepherds Bush, London, W12 7JD

Tel: 0208 740 8740 Email: enquiries@jorgensenturner.com

<https://www.jorgensenturner.com/>

Disclaimer

These particulars, whilst believed to be accurate are set out as a general outline only for guidance and do not constitute any part of an offer or contract. Intending purchasers should not rely on them as statements of representation of fact, but must satisfy themselves by inspection or otherwise as to their accuracy. No person in this firm's employment has the authority to make or give any representation or warranty in respect of the property.