



jt | JORGENSENTURNER



Aldine Street, Shepherds  
Bush London

£1,550 Per Month



 1  1  1  C

# Aldine Street, Shepherds Bush London

£1,550 Per Month



## Summary Description

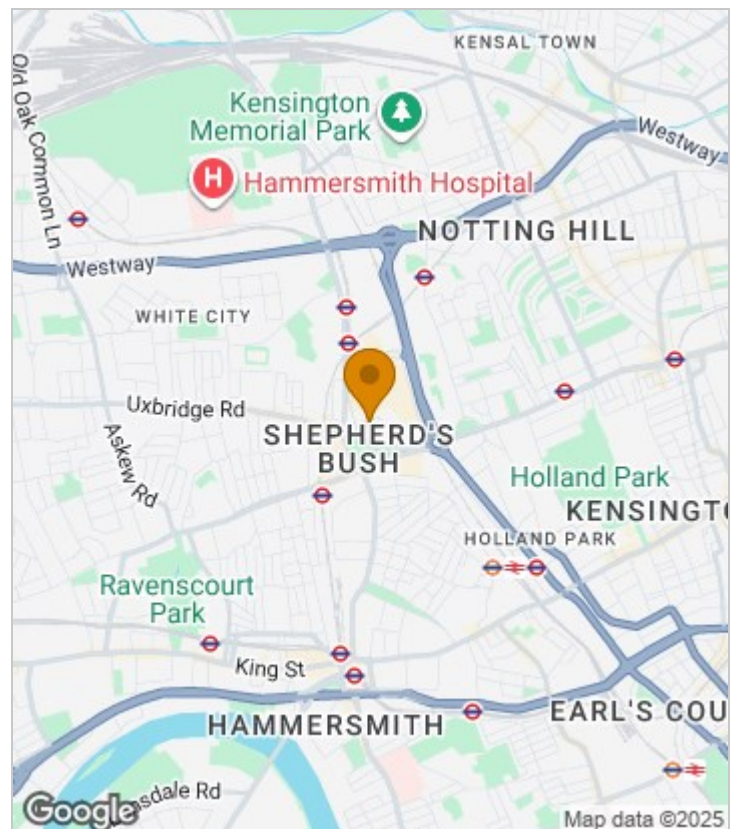
**\*\*NEW TO THE MARKET\*\*.** A well proportioned one bedroom first floor flat in the centrally located purpose built block.

The apartment has a spacious reception room, generous double bedroom, fitted kitchen and three piece bathroom. The property further benefits from a communal area to the rear of the property.

Aldine Street is situated in the heart of Shepherds Bush with unrivalled access to all the retail experiences in Westfield White City and Shepherds Bush Green. Transport wise the location is superbly served by Shepherds Bush (Central Line Tube), Shepherds Bush Market (Hammersmith and City and Circle Line tubes) and Shepherds Bush overland station.

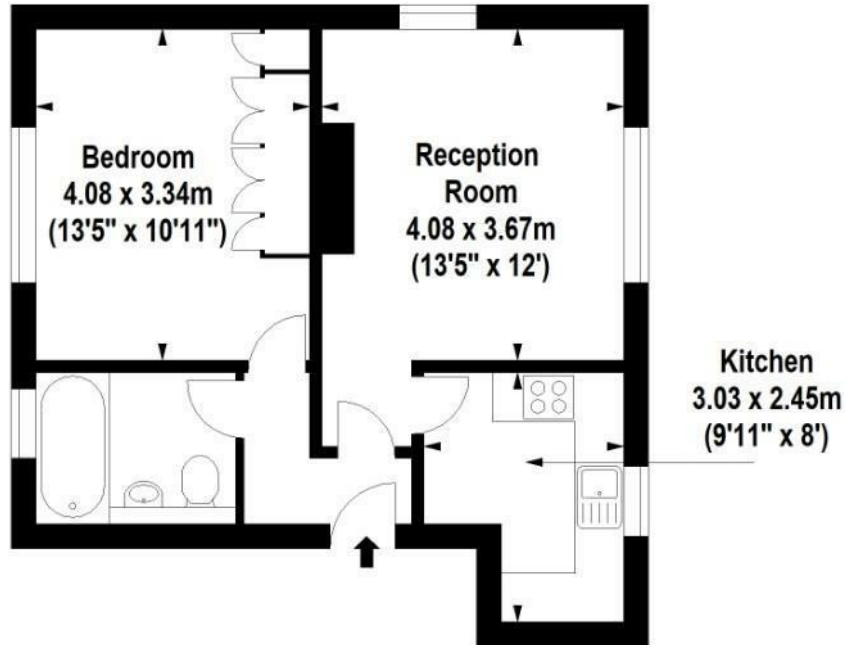
Hammersmith and Fulham Band

## Area Map





# Floor Plan



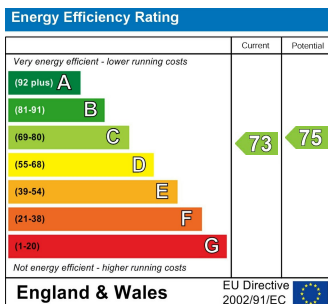
For Identification Purposes Only. Not To Scale. © www.totalvista.uk 2025

**Aldine Court,  
Aldine Street, W12**

Approx. Gross Internal Area  
45.34 Sq M - 488 Sq Ft



## Energy Efficiency Graph



## Viewing

Please contact our Lettings SB Office on 0208 740 8740 if you wish to arrange a viewing appointment for this property or require further information.

- ONE DOUBLE BEDROOM
- CENTRAL LOCATION
- CENTRAL LINE TUBE
- MOMENTS FROM WESTFIELD WHITE CITY
- FIRST FLOOR FLAT
- FURNISHED
- AVAILABLE NOW

For further information contact:

Lettings SB, 234 Uxbridge Road, Shepherds Bush, London, W12 7JD

Tel: 0208 740 8740 Email: [enquiries@jorgensenturner.com](mailto:enquiries@jorgensenturner.com)

<https://www.jorgensenturner.com/>

### Disclaimer

These particulars, whilst believed to be accurate are set out as a general outline only for guidance and do not constitute any part of an offer or contract. Intending purchasers should not rely on them as statements of representation of fact, but must satisfy themselves by inspection or otherwise as to their accuracy. No person in this firm's employment has the authority to make or give any representation or warranty in respect of the property.

