



jt | JORGENSENTURNER



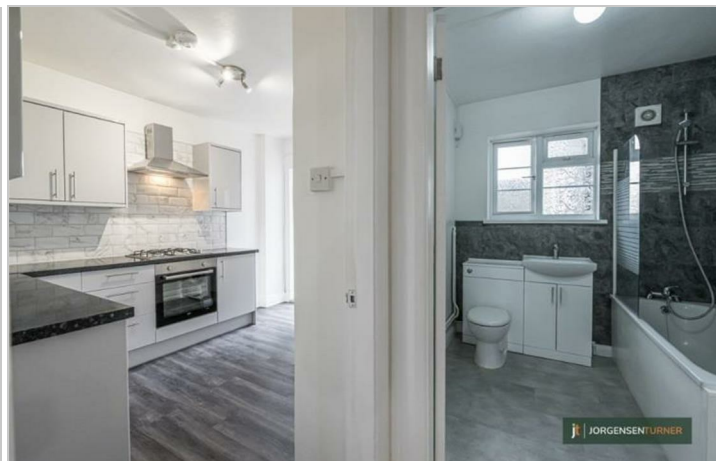
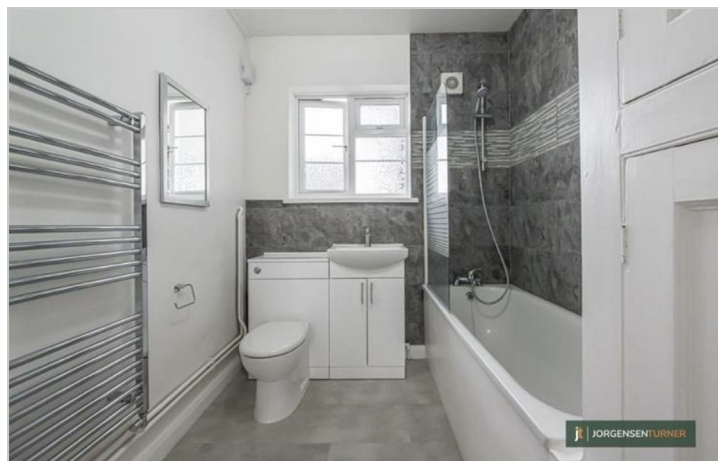
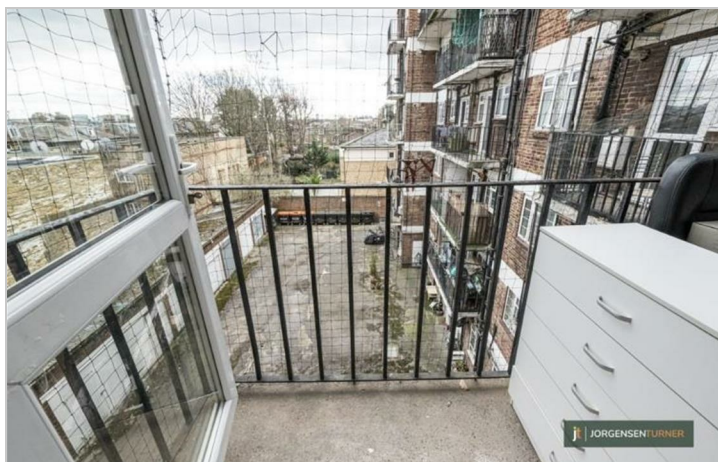
Hanover Court, Shepherds
Bush, W12

£2,300 Per Month



Hanover Court, Shepherds Bush, W12

£2,300 Per Month



Summary Description

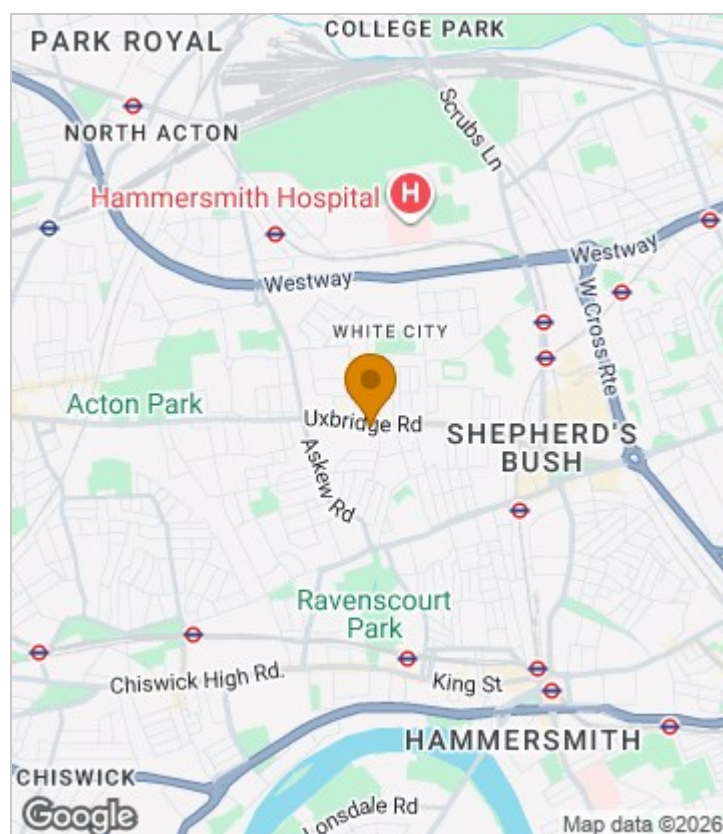
****NEW TO THE MARKET**** Jorgensen Turner are proud to offer this three double bedroom apartment. This lovely apartment offers a modern kitchen and bathroom along with flexible living space. This property is perfect for professional sharers or a small family alike. OFFERED PART FURNISHED

Council Tax Band: D

****Please note. If let as a three bedroom flat there is no living room.****

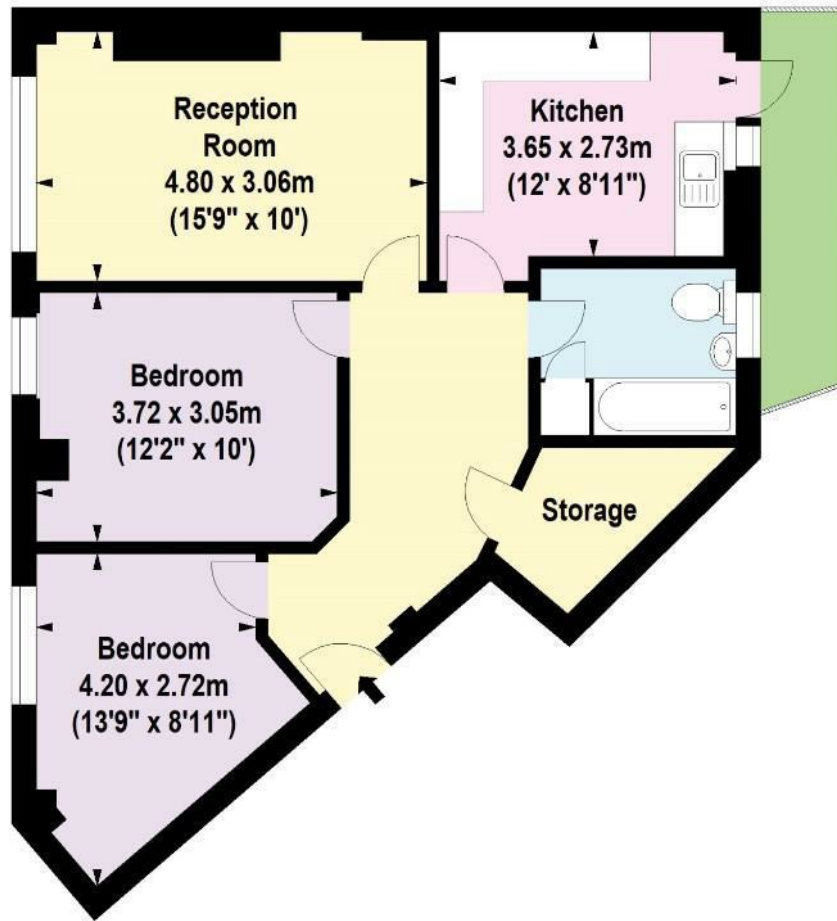
Deposit: A holding deposit of 1 weeks rent will be required to secure the property and a Security deposit of 5 weeks rent (for rents under £50,000 pa) or 6 weeks (for rents over £50,000 pa)

Area Map





Floor Plan



Third Floor

For Identification Purposes Only. Not To Scale. © www.totalvista.uk 2022



**Hanover Court,
Uxbridge Road, W12**

Approx. Gross Internal Area
67.07 Sq M - 722 Sq Ft



Energy Efficiency Graph



Viewing

Please contact our Lettings SB Office on 0208 740 8740 if you wish to arrange a viewing appointment for this property or require further information.

- Three double bedrooms
- Part - Furnished
- Lift access - Third floor
- Close to local amenities, cafes and pubs
- available 28th May 2026
- Maximum three sharers

For further information contact:

Lettings SB, 234 Uxbridge Road, Shepherds Bush, London, W12 7JD

Tel: 0208 740 8740 Email: enquiries@jorgensenturner.com

<https://www.jorgensenturner.com/>

Disclaimer

These particulars, whilst believed to be accurate are set out as a general outline only for guidance and do not constitute any part of an offer or contract. Intending purchasers should not rely on them as statements of representation of fact, but must satisfy themselves by inspection or otherwise as to their accuracy. No person in this firm's employment has the authority to make or give any representation or warranty in respect of the property.