



jt | JORGENSENTURNER



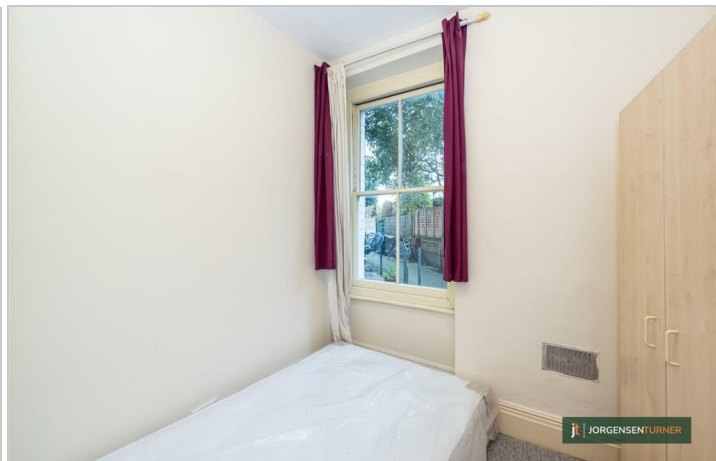
Mark Mansions, Westville
Road, Shepherds Bush,
£1,950 Per Month



jt

Mark Mansions, Westville Road, Shepherds Bush,

£1,950 Per Month



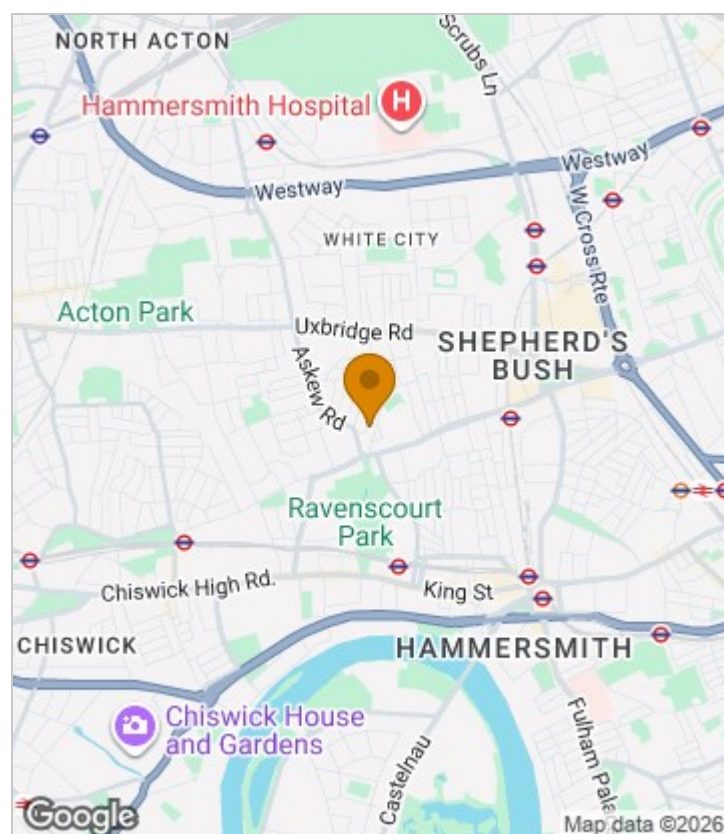
Summary Description

**** AVAILABLE NOW ** NEWLY REDECORATED**
**Jorgensen Turner estate agents Shepherds Bush are delighted to offer a two bedroom flat situated in an Edwardian mansion block. Located on the ground floor which gives direct access to a section of a shared patio garden plus beautiful grassed communal gardens. Offered part furnished and available NOW!!

Council tax band D H&F
EPC: D

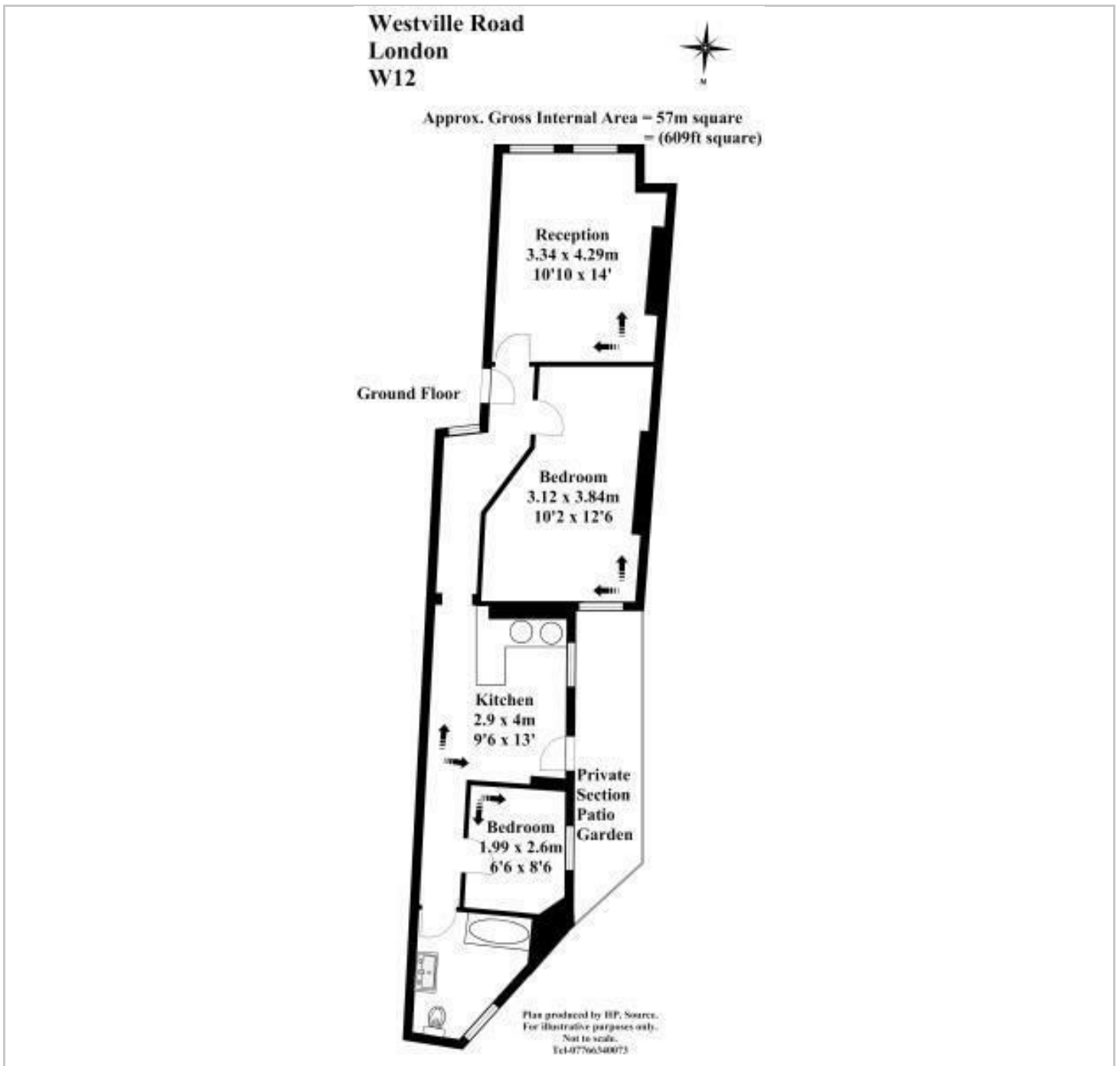
Deposit: One weeks' rent to reserve, with a security deposit of either 5 weeks' rent (for properties under £50,000pa) or 6 weeks' rent (for those over £50,000pa).

Area Map

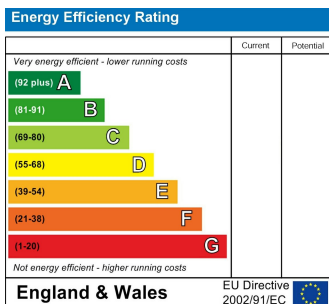




Floor Plan



Energy Efficiency Graph



Viewing

Please contact our Lettings SB Office on 0208 740 8740 if you wish to arrange a viewing appointment for this property or require further information.

- two bedrooms
- Set in a desirable mansion block
- newly re-decorated
- Communal gardens
- available from 29/11
- Furnished
- Ground floor flat
- Walking distance to Shepherds Bush Green
- Shared patio
- NEW CARPETS COMING.

For further information contact:

Lettings SB, 234 Uxbridge Road, Shepherds Bush, London, W12 7JD

Tel: 0208 740 8740 Email: enquiries@jorgensenturner.com

<https://www.jorgensenturner.com/>

Disclaimer

These particulars, whilst believed to be accurate are set out as a general outline only for guidance and do not constitute any part of an offer or contract. Intending purchasers should not rely on them as statements of representation of fact, but must satisfy themselves by inspection or otherwise as to their accuracy. No person in this firm's employment has the authority to make or give any representation or warranty in respect of the property.