



jorgensenturner  
estate agents



Lanark Mansions,  
Shepherds Bush, W12

£2,200 Per Month



2



1



1



C

# Lanark Mansions, Shepherds Bush, W12

£2,200 Per Month



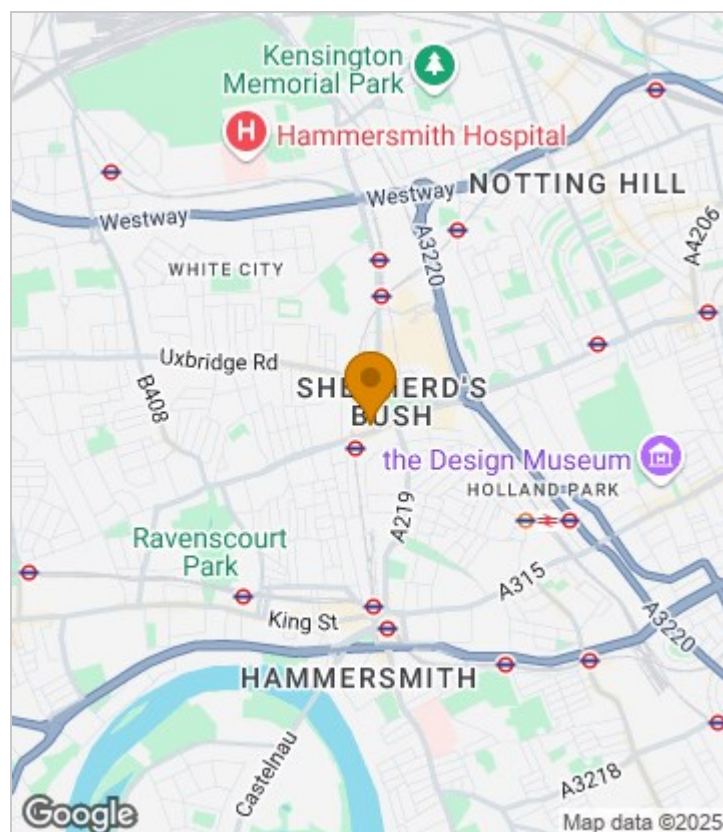
## Summary Description

**\*\* NEW TO THE MARKET\*\*** Jorgensen Turner estate agents Shepherds Bush are pleased to offer a spacious two double bedroom flat in ultra-convenient location. The flat benefits from an open plan kitchen-reception, two double bedrooms and modern bathroom. Additional benefits include wooden floors throughout, a private roof terrace with stunning views across West London and property being offered furnished. Located within close proximity to Goldhawk Road and Shepherds Bush stations.

Available now - virtual viewings ok

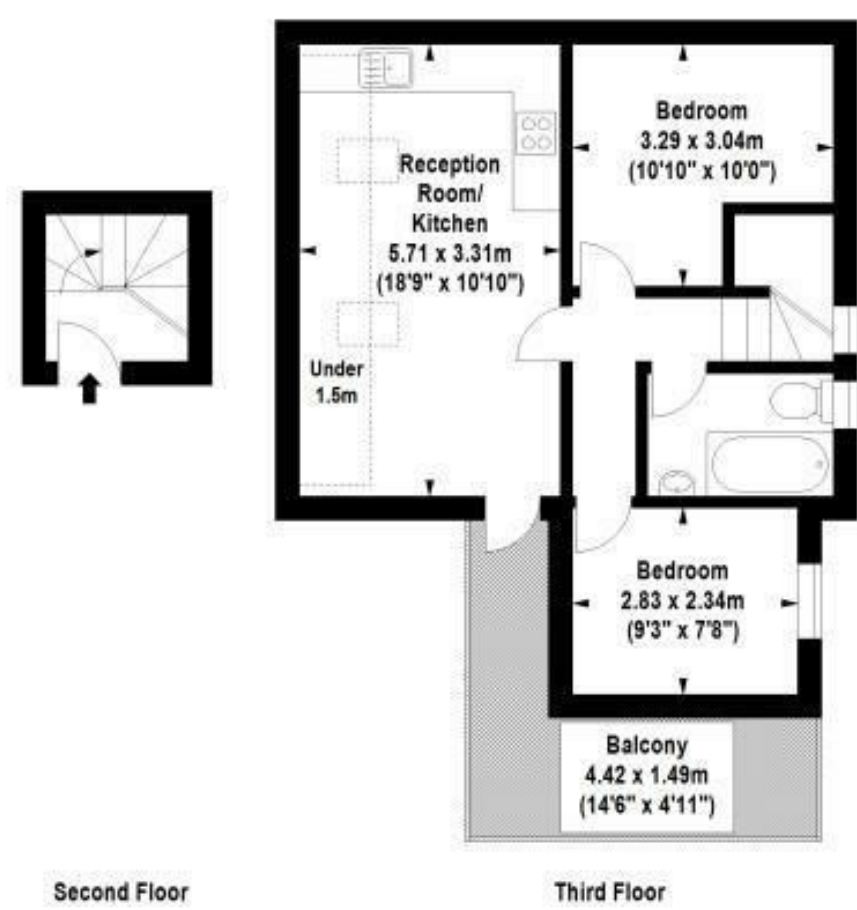
Council tax band C - Hammersmith and Fulham

## Area Map





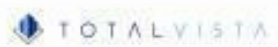
# Floor Plan



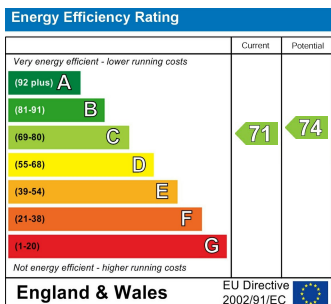
For Identification Purposes Only. Not To Scale. © www.totalvista.uk 2018

**Lanark Mansions, W12**

Approx. Gross Internal Area  
48.93 Sq M - 527 Sq Ft



## Energy Efficiency Graph



## Viewing

Please contact our Lettings SB Office on 0208 740 8740 if you wish to arrange a viewing appointment for this property or require further information.

- TWO DOUBLE BEDROOMS
- FURNISHED
- CLOSE TO SHOPS/ TUBES AND AMENTIES
- ROOF TERRACE
- AVAILABLE NOW

For further information contact:

Lettings SB, 234 Uxbridge Road, Shepherds Bush, London, W12 7JD

Tel: 0208 740 8740 Email: [enquiries@jorgensenturner.com](mailto:enquiries@jorgensenturner.com)

<https://www.jorgensenturner.com/>

### Disclaimer

These particulars, whilst believed to be accurate are set out as a general outline only for guidance and do not constitute any part of an offer or contract. Intending purchasers should not rely on them as statements of representation of fact, but must satisfy themselves by inspection or otherwise as to their accuracy. No person in this firm's employment has the authority to make or give any representation or warranty in respect of the property.

