



jt | JORGENSENTURNER



Ethelden Road, Shepherds  
Bush, W12

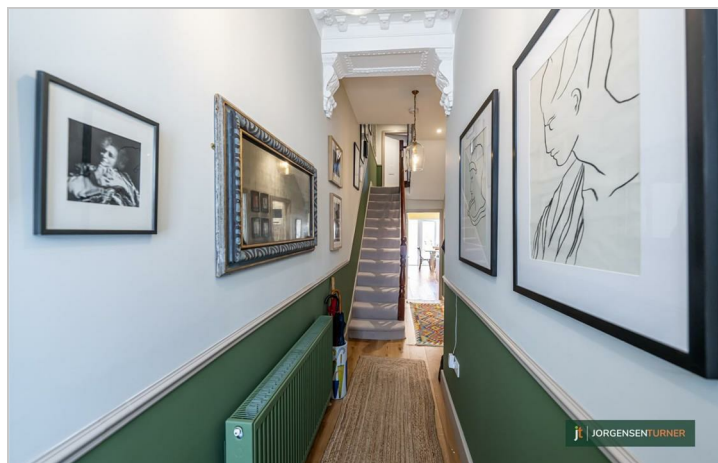
£5,000



jt 4 2 2 C jt

# Ethelden Road, Shepherds Bush, W12

£5,000



## Summary Description

**\*\*NEW TO THE MARKET\*\*** Jorgensen Turner are proud to present this stunning four double bedroom, two bathroom family home on one of Shepherds Bush's premiere roads. Spanning over three floors, this beautiful property has a bright open-plan kitchen-diner leading onto a patio garden perfect for alfresco dining or enjoying the sunshine. The 20ft reception room offers ideal entertaining space for the modern family. To the ground floor there's also a utility room.

Upstairs, the first floor offers well-sized bedrooms, perfect for children, guests, or a home office. The second floor offers a generous main bedroom complete with En-suite shower room.

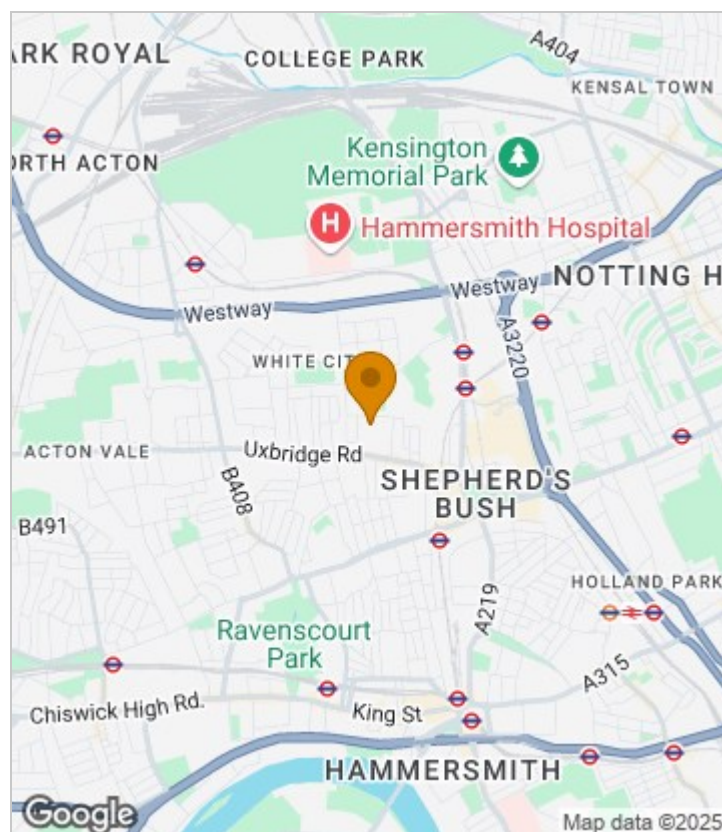
Unfurnished and available 2nd June 2025.

Ethelden Road is a prime residential road located within the heart of Shepherds Bush. The location offers ultra-convenience for all the shops, bars and restaurants on the Uxbridge Road, the Westfield shopping centre, John Lewis and the infamous Soho House members club. The location is extremely well served transport wise with the Hammersmith and City and Central Line tubes, Shepherds Bush Over ground station and numerous bus routes in to Central London. For recreational use the lovely Hammersmith Park is only a short walk away. For schools the property is within walking distance to Latymer, Godolphin and St Paul's independent schools as well as St Stephen's primary school (located at the end of the road) which is rated outstanding by Ofsted.

Council Tax Band F—Hammersmith & Fulham.

Deposit: One weeks' rent to reserve, with a security deposit of either 5 weeks' rent (for properties under £50,000pa)

## Area Map

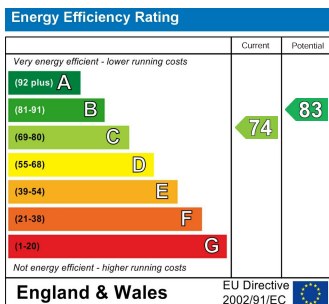




# Floor Plan



## Energy Efficiency Graph



## Viewing

Please contact our Lettings SB Office on 0208 740 8740 if you wish to arrange a viewing appointment for this property or require further information.

- PERFECT FAMILY HOME
- MOMENTS FROM OFTSED "OUTSTANDING" PRIMARY SCHOOLS
- FOUR DOUBLE BEDROOMS
- UNFURNISHED
- LARGE KITCHEN-DINER
- PRIVATE PATIO GARDEN
- AVAILABLE 2nd JUNE 2025

For further information contact:

Lettings SB, 234 Uxbridge Road, Shepherds Bush, London, W12 7JD

Tel: 0208 740 8740 Email: [enquiries@jorgensenturner.com](mailto:enquiries@jorgensenturner.com)

<https://www.jorgensenturner.com/>

### Disclaimer

These particulars, whilst believed to be accurate are set out as a general outline only for guidance and do not constitute any part of an offer or contract. Intending purchasers should not rely on them as statements of representation of fact, but must satisfy themselves by inspection or otherwise as to their accuracy. No person in this firm's employment has the authority to make or give any representation or warranty in respect of the property.

