

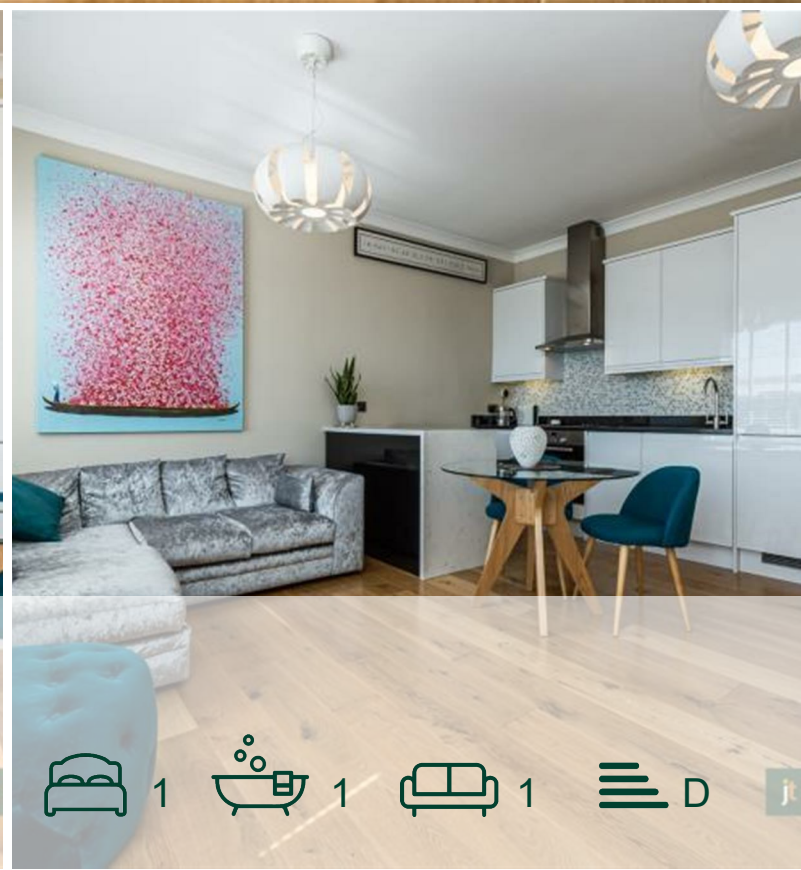


jt | JORGENSENTURNER



Uxbridge Road, Shepherds  
Bush, W12

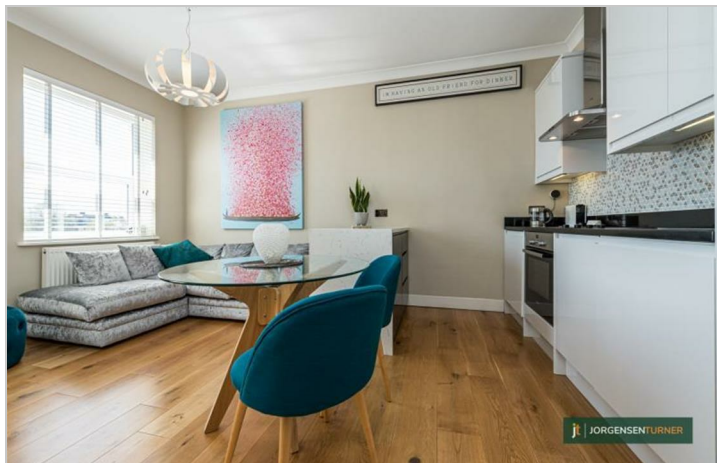
£1,800 Per Month



1 1 1 D

# Uxbridge Road, Shepherds Bush, W12

£1,800 Per Month

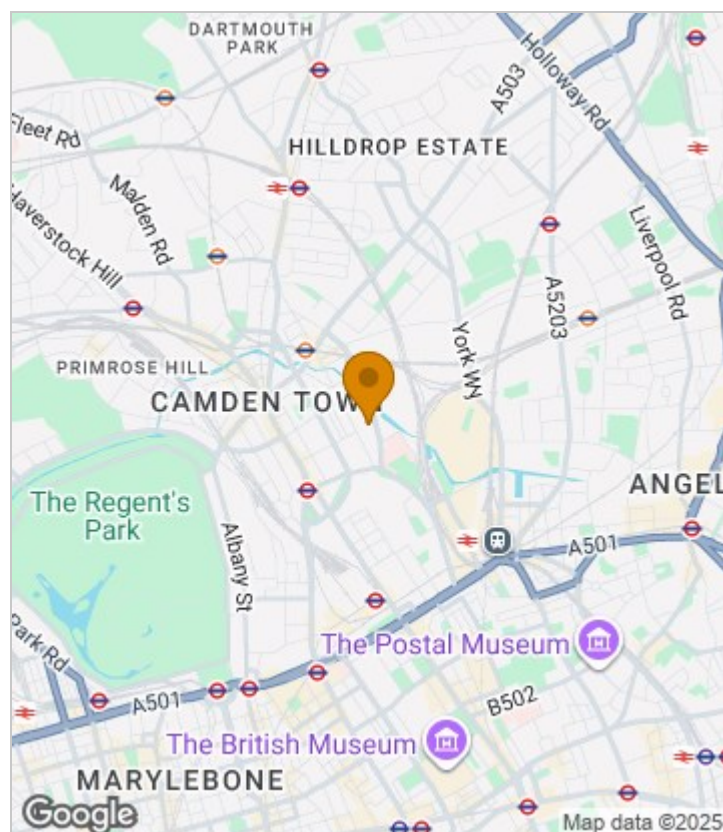


## Summary Description

**\*\*NEW TO THE MARKET\*\*.** Jorgensen Turner estate agents Shepherds Bush have a pleasure to offer this stylish third floor one double bedroom conversion flat situated in the centre of Shepherds Bush. The property offers a spacious south facing open-plan kitchen reception room with fully fitted appliances, one double bedroom and a modern three-piece bathroom. Offered to the market part-furnished and available 23rd July. Located next to Shepherds Bush Market station and within close proximity to Hammersmith Park and Westfield Shopping Centre.

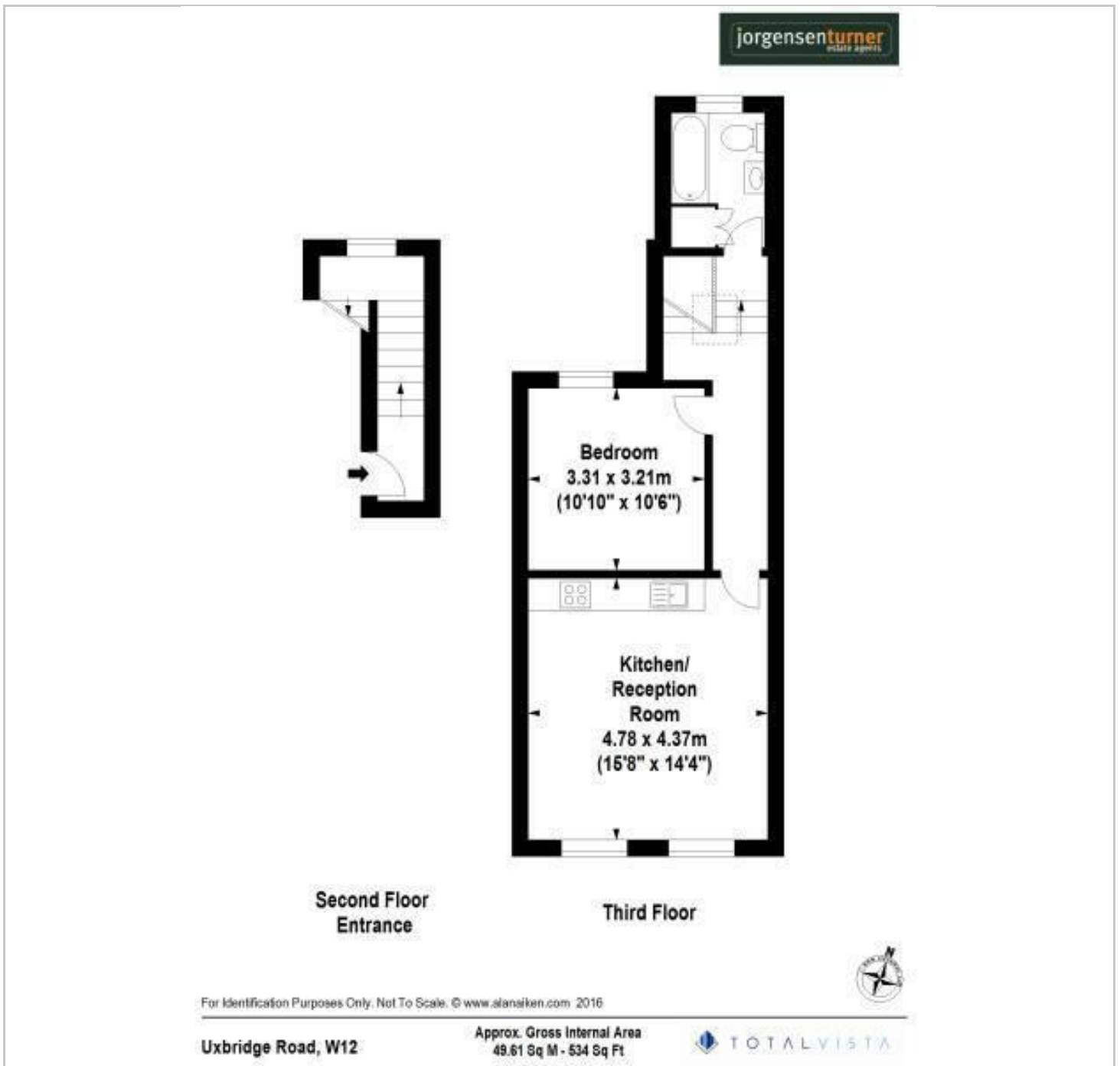
Council tax band: C Ham & Ful

## Area Map

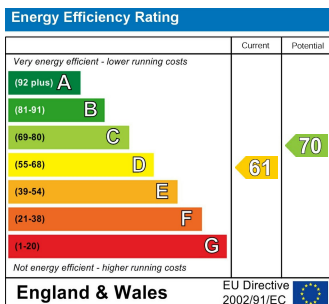




# Floor Plan



## Energy Efficiency Graph



## Viewing

Please contact our Lettings SB Office on 0208 740 8740 if you wish to arrange a viewing appointment for this property or require further information.

- STUNNING APARTMENT
- BRIGHT AND AIRY
- MODERN THROUGHOUT
- PART FURNISHED
- CLOSE TO TUBE STATION
- TOP FLOOR FLAT
- AVAILABLE 23RD JULY

For further information contact:

Lettings SB, 234 Uxbridge Road, Shepherds Bush, London, W12 7JD

Tel: 0208 740 8740 Email: [enquiries@jorgensenturner.com](mailto:enquiries@jorgensenturner.com)

<https://www.jorgensenturner.com/>

### Disclaimer

These particulars, whilst believed to be accurate are set out as a general outline only for guidance and do not constitute any part of an offer or contract. Intending purchasers should not rely on them as statements of representation of fact, but must satisfy themselves by inspection or otherwise as to their accuracy. No person in this firm's employment has the authority to make or give any representation or warranty in respect of the property.

