



jt | JORGENSENTURNER



Willow Vale, Shepherds
Bush, London
£2,500 Per Month

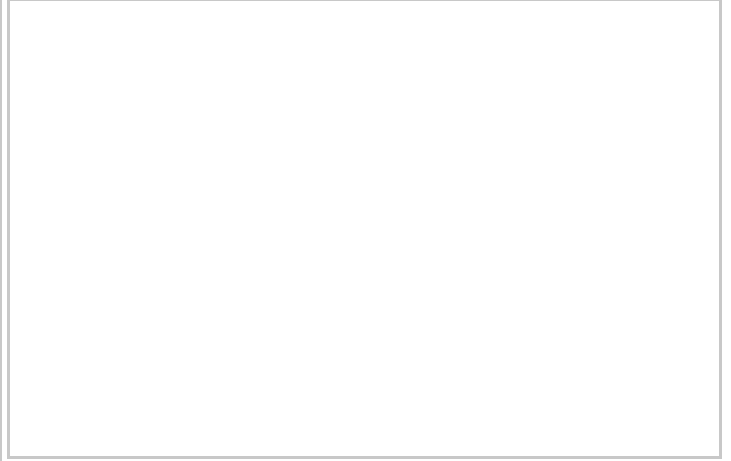


2 1 1 C

jt

Willow Vale, Shepherds Bush, London

£2,500 Per Month



Summary Description

JorgensenTurner Estate Agents proudly present this stunning two-bedroom apartment newly available to the market. This exception apartment has been meticulously crafted to an exceptional standard, showcasing a blend of modern elegance and functionality.

The heart of this home is its spacious open plan living and dining room, seamlessly integrated with an extended modern kitchen. Complementing this is a sleek modern bathroom, ensuring comfort and convenience.

This property also boasts a beautiful west-facing rear garden, providing a serene outdoor space perfect for relaxation and entertaining. Situated on a quiet residential road, it offers a peaceful retreat from the hustle and bustle of city life.

Ideally located within close proximity to the diverse amenities of Uxbridge Road and the renowned Westfields shopping centre, this apartment ensures convenient access to a variety of shops, restaurants, and entertainment options. Excellent transport links are provided by Shepherds Bush Market station (Hammersmith & City and Circle lines) and Shepherds Bush station (Central line and Overground).

The apartment is offered on a furnished basis and is available from end of August.

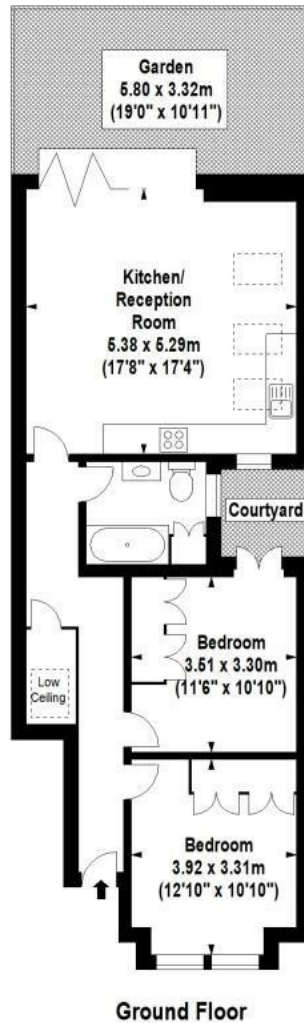
Council Tax Band D—Hammersmith & Fulham.

Deposit: One weeks' rent to reserve, with a security deposit of either 5 weeks' rent (for properties under £50,000pa) or 6 weeks' rent (for those over £50,000pa).

Area Map



Floor Plan



Ground Floor

For Identification Purposes Only. Not To Scale. © www.totalvista.uk 2023

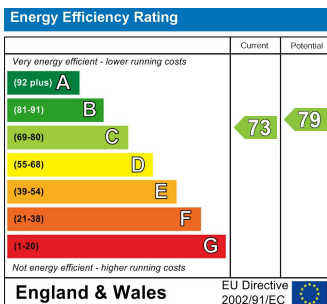


Willow Vale, W12

Approx. Gross Internal Area
70.79 Sq M - 762 Sq Ft



Energy Efficiency Graph



Viewing

Please contact our Lettings SB Office on 0208 740 8740 if you wish to arrange a viewing appointment for this property or require further information.

- BEAUTIFULLY LAID OUT
- MODERN KITCHEN
- PRIVATE GARDEN
- CLOSE TO LOCAL AMENITIES
- AVAILABLE END-AUGUST
- OPEN PLAN LIVING
- SLEEK BATHROOM
- QUIET RESIDENTIAL ROAD
- EXCELLENT TRANSPORT LINKS

For further information contact:

Lettings SB, 234 Uxbridge Road, Shepherds Bush, London, W12 7JD

Tel: 0208 740 8740 Email: enquiries@jorgensenturner.com

<https://www.jorgensenturner.com/>

Disclaimer

These particulars, whilst believed to be accurate are set out as a general outline only for guidance and do not constitute any part of an offer or contract. Intending purchasers should not rely on them as statements of representation of fact, but must satisfy themselves by inspection or otherwise as to their accuracy. No person in this firm's employment has the authority to make or give any representation or warranty in respect of the property.