



jt | JORGENSENTURNER



Tunis Road, Shepherds  
Bush

£2,100 Per Month



jt 2 1 1 C jt

# Tunis Road, Shepherds Bush

£2,100 Per Month



## Summary Description

**\*\*DOGS CONSIDERED\*\*** Jorgensen Turner Estate Agents are delighted to introduce to the market this beautiful apartment located on Tunis Road—a stone's throw away from Shepherd's Bush Green and the renowned Westfield London. This 728sqft property offers contemporary elegance, blending effortlessly with the convenience of urban living.

This two-bedroom apartment impresses with its spacious double bedrooms and modern living spaces. At its core, the separate kitchen is fully fitted with wooden cabinetry and modern appliances, perfect for comfy nights in or catering for a host of guests in the evenings. The property holds a generous reception room, dressed with a traditional fireplace and high ceilings, which opens up to a large balcony—offering a private space for outdoor relaxation. An additional private balcony at the front of the property provides a secluded area for peaceful moments away from the hustle and bustle of every day life.

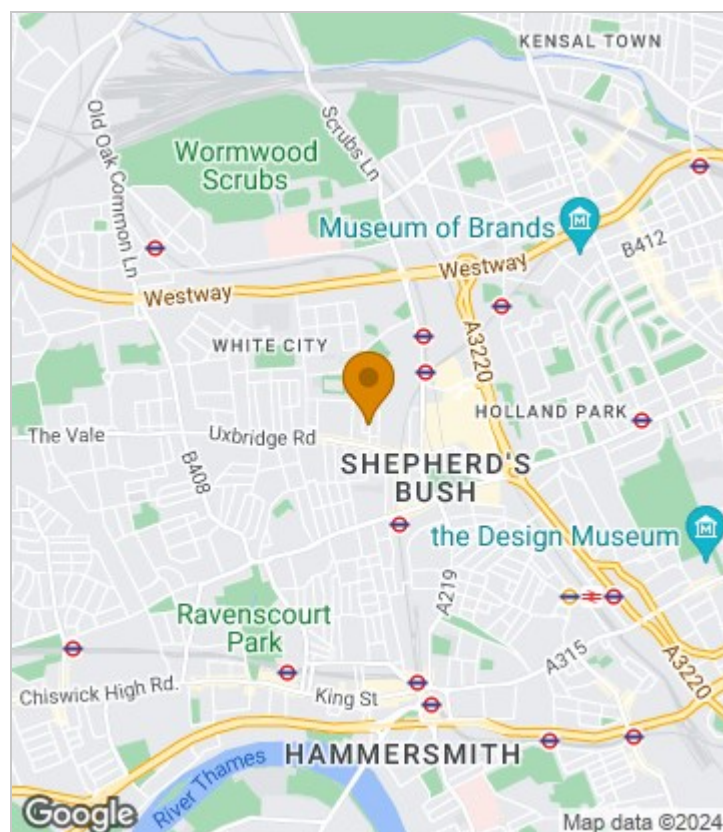
The modern bathroom is complemented by an extra W/C, ensuring functionality and convenience for both residents and guests. The apartment's classic brick façade and landscaped surroundings add to its aesthetic appeal, while its proximity to key transport links, including Shepherd's Bush Station, underscores its exceptional location.

Set on the peaceful residential street of Tunis Road, this apartment offers a unique sanctuary from the fast pace of city life. Its ideal location ensures easy access to the diverse amenities and excellent transport connections of Shepherd's Bush, making it a highly desirable residence. Offered furnished and available immediately, this home is a blank canvas for your unique style of personalisation.

Council Tax Band C—Hammersmith & Fulham.

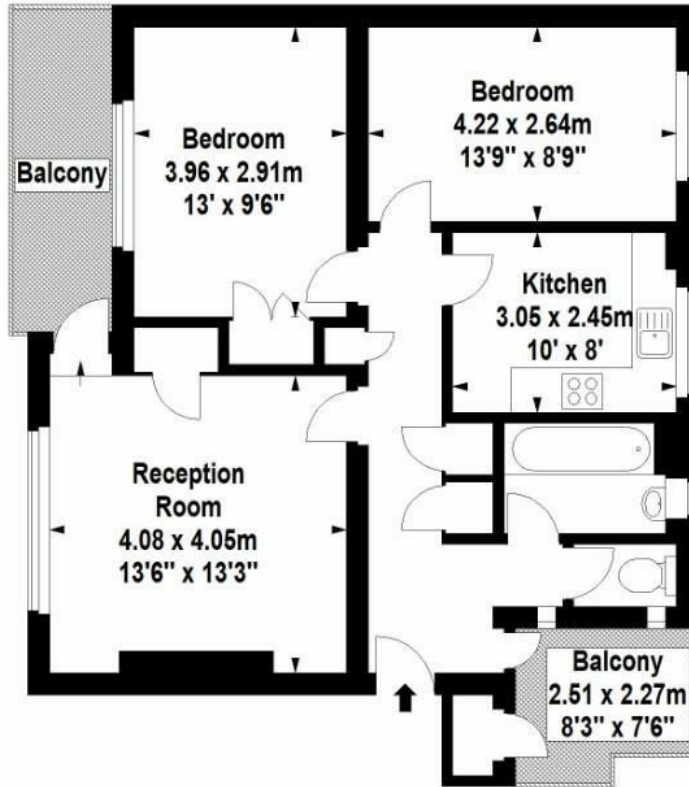
Deposit: One weeks' rent to reserve, with a security deposit of either 5 weeks' rent (for properties under £50,000pa) or 6 weeks' rent (for those over £50,000pa).

## Area Map





# Floor Plan



## Second Floor

For Identification Purposes Only. Not To Scale. © www.totalvista.uk 2024

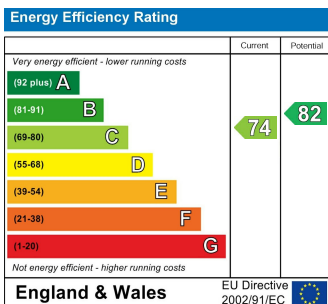


**Arlington House,**  
Tunis Road, W12

Approx. Gross Internal Area  
67.63 Sq M - 728 Sq Ft



## Energy Efficiency Graph



## Viewing

Please contact our Lettings SB Office on 0208 740 8740 if you wish to arrange a viewing appointment for this property or require further information.

- TWO PRIVATE BALCONIES
- WELL-EQUIPPED KITCHEN
- BATHROOM WITH ADDITIONAL W/C
- EXCELLENT PUBLIC TRANSPORT LINKS
- AVAILABLE IMMEDIATELY
- SPACIOUS RECEPTION ROOM
- TWO GOOD SIZED DOUBLE BEDROOMS
- HIGH CEILINGS THROUGHOUT
- OFFERED FURNISHED
- CENTRALLY LOCATED

For further information contact:

Lettings SB, 234 Uxbridge Road, Shepherds Bush, London, W12 7JD

Tel: 0208 740 8740 Email: [enquiries@jorgensenturner.com](mailto:enquiries@jorgensenturner.com)

<https://www.jorgensenturner.com/>

### Disclaimer

These particulars, whilst believed to be accurate are set out as a general outline only for guidance and do not constitute any part of an offer or contract. Intending purchasers should not rely on them as statements of representation of fact, but must satisfy themselves by inspection or otherwise as to their accuracy. No person in this firm's employment has the authority to make or give any representation or warranty in respect of the property.

