



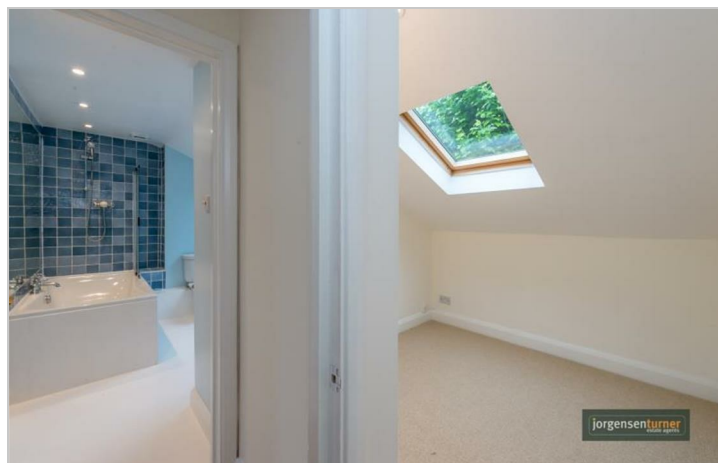
Loftus Road, Shepherds  
Bush W12

£2,450 Per Week

2 1 1 C

# Loftus Road, Shepherds Bush W12

£2,450 Per Week



## Summary Description

**\*\* NEW TO THE MARKET\*\*** . Jorgensen Turner estate agents Shepherds Bush are proud to present this amazing two bedroom split level flat on a lovely quiet residential road. This unique property benefits from a family sized eat-in kitchen with wooden floors, spacious living room ideal for entertaining and a master bedroom. Additional benefits include second double bedroom, smaller study room/single bedroom and a modern family bathroom. This unusually bright and airy flat would make an ideal home for a couple or a family. The flat is presented to a good standard throughout. It is located close to the amenities of Shepherds Bush and Westfield Shopping Centre. Shepherds Bush stations are a short walk away. It is available from the beginning of September on an unfurnished basis. Early viewings are highly recommended.

## Area Map





# Floor Plan

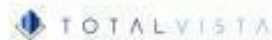


For Identification Purposes Only. Not To Scale. © www.alanaiken.com 2016

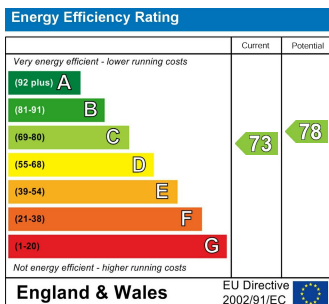


Loftus Road, W12

Approx. Gross Internal Area  
94.48 Sq M - 1017 Sq Ft



## Energy Efficiency Graph



## Viewing

Please contact our Lettings SB Office on 0208 740 8740 if you wish to arrange a viewing appointment for this property or require further information.

- TWO DOUBLE BEDROOMS
- UNFURNISHED
- 1017 SQ FT
- EXTRA STUDY ROOM
- CLOSE TO MULTIPLE TUBE STATIONS
- COUPLES/ SMALL FAMILIES ONLY

For further information contact:

Lettings SB, 234 Uxbridge Road, Shepherds Bush, London, W12 7JD

Tel: 0208 740 8740 Email: enquiries@jorgensenturner.com

<https://www.jorgensenturner.com/>

### Disclaimer

These particulars, whilst believed to be accurate are set out as a general outline only for guidance and do not constitute any part of an offer or contract. Intending purchasers should not rely on them as statements of representation of fact, but must satisfy themselves by inspection or otherwise as to their accuracy. No person in this firm's employment has the authority to make or give any representation or warranty in respect of the property.

