



jt | JORGENSENTURNER



Oaklands Grove,
Shepherds Bush, W12

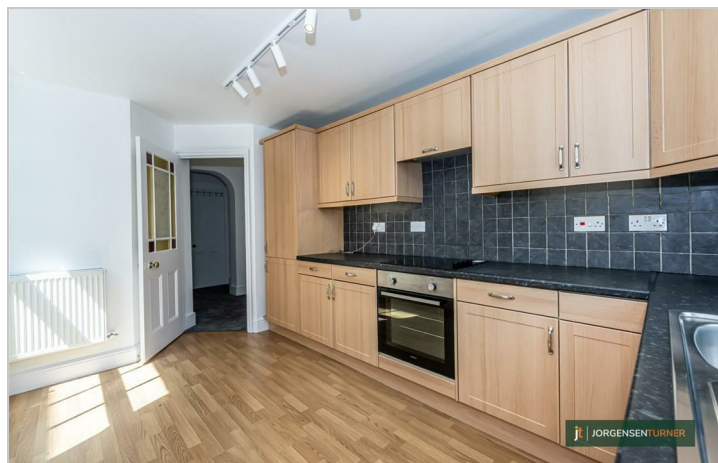
£1,895 Per Week



1 1 1 C

Oaklands Grove, Shepherds Bush, W12

£1,895 Per Week

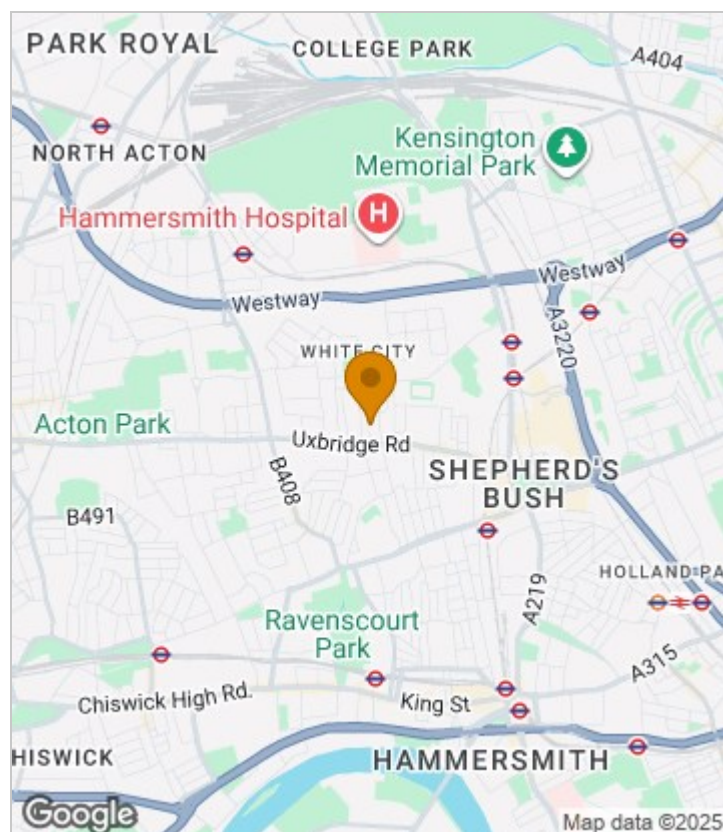


Summary Description

****NEW TO THE MARKET**** Jorgensen Turner estate agents Shepherds Bush are delighted to offer this fantastic newly redecorated one bedroom garden flat located in a quiet residential road just a short distance from the amenities of popular Uxbridge Road. The property is well presented throughout and offers spacious accommodation with well-proportioned rooms; including a bright and separate reception room with wood flooring, a good sized double bedroom with built-in storage and a fully equipped modern kitchen. Additional benefits include a contemporary bathroom and a stunning private garden. Offered part furnished; with an unrivalled location this property will not be available for long so early viewings are highly recommended.

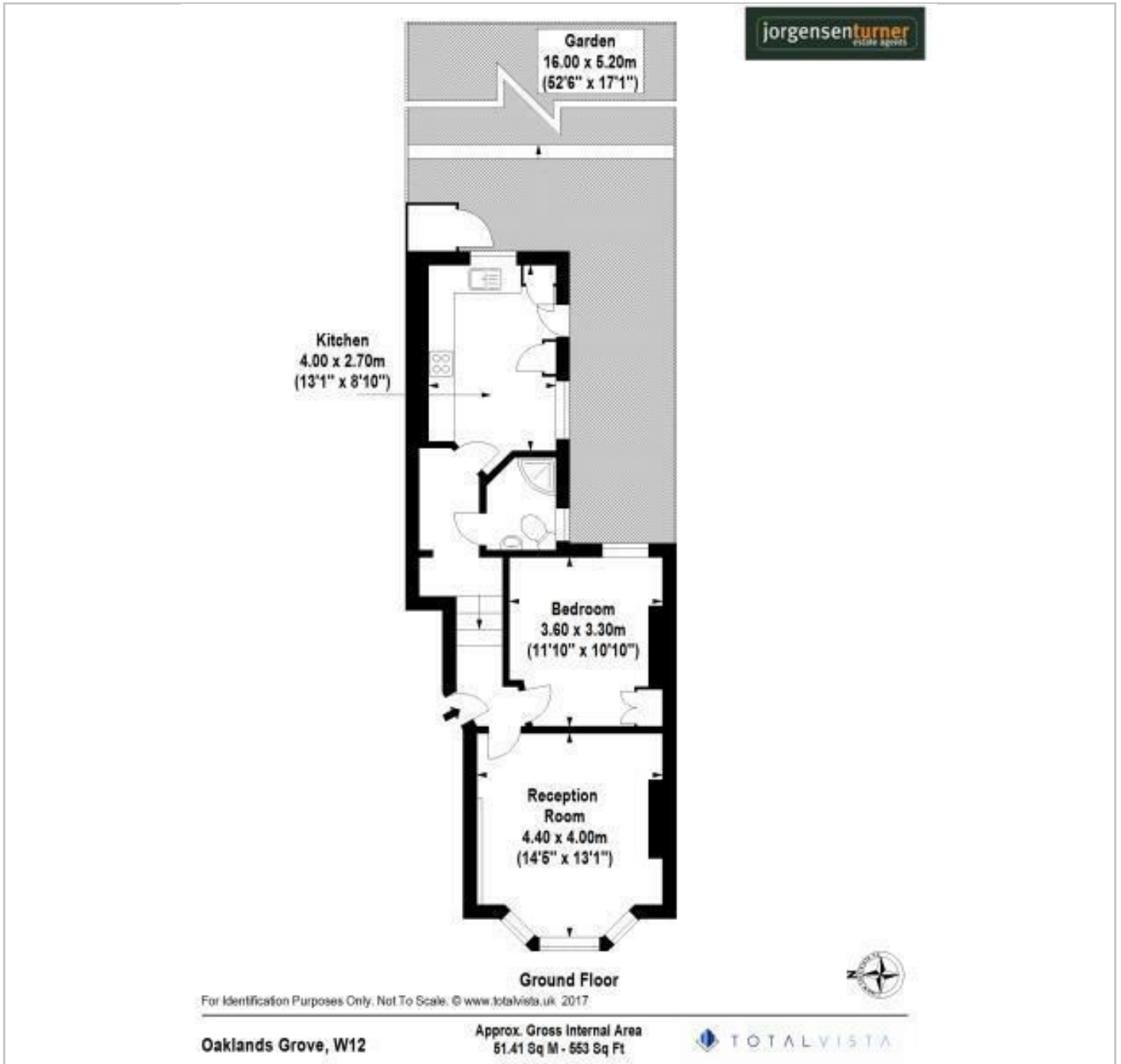
****AVAILABLE NOW ****

Area Map

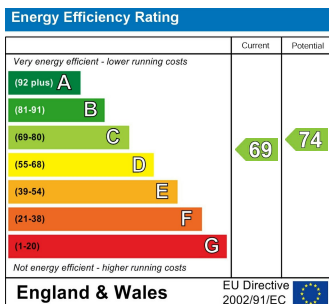




Floor Plan



Energy Efficiency Graph



Viewing

Please contact our Lettings SB Office on 0208 740 8740 if you wish to arrange a viewing appointment for this property or require further information.

- ONE BEDROOM GARDEN
- NEWLY REDECORATED FLAT
- AVAILABLE NOW
- PART/ UNFURNISHED
- WALKING DISTANCE TO TUBES AND SHOPS
- PETS CONSIDERED
- QUIET TREE-LINED STREET

For further information contact:

Lettings SB, 234 Uxbridge Road, Shepherds Bush, London, W12 7JD

Tel: 0208 740 8740 Email: enquiries@jorgensenturner.com

<https://www.jorgensenturner.com/>

Disclaimer

These particulars, whilst believed to be accurate are set out as a general outline only for guidance and do not constitute any part of an offer or contract. Intending purchasers should not rely on them as statements of representation of fact, but must satisfy themselves by inspection or otherwise as to their accuracy. No person in this firm's employment has the authority to make or give any representation or warranty in respect of the property.

