

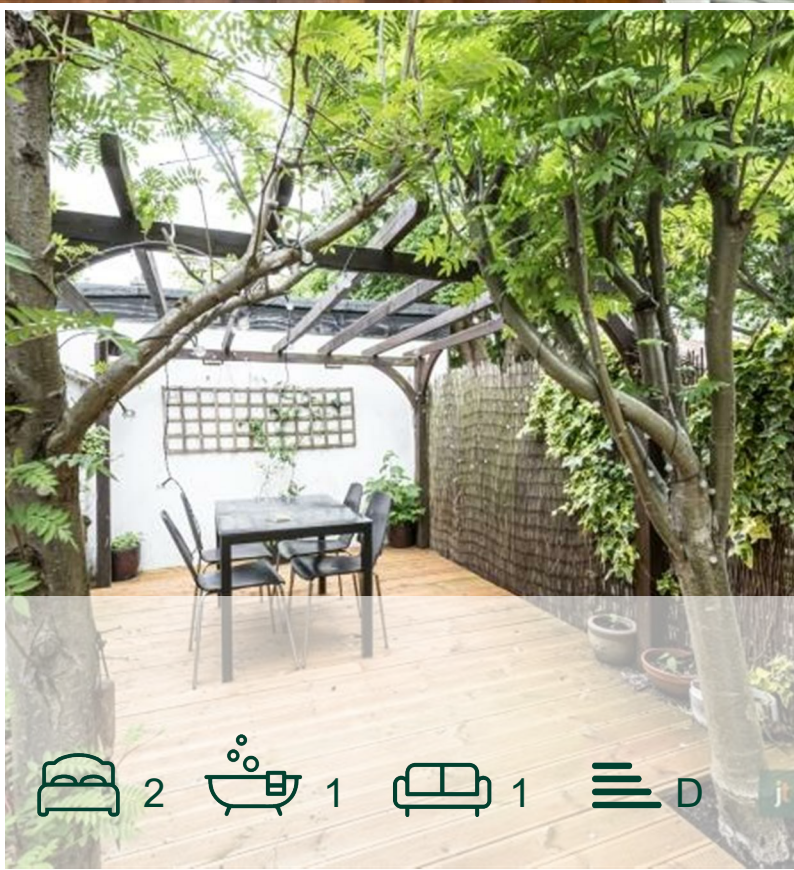


jt | JORGENSENTURNER



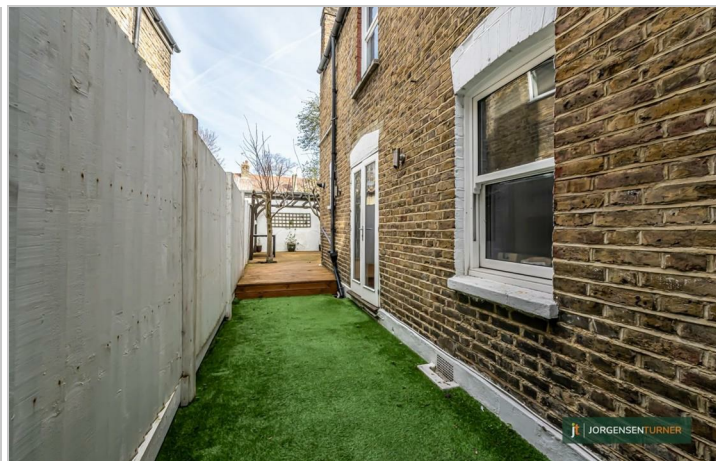
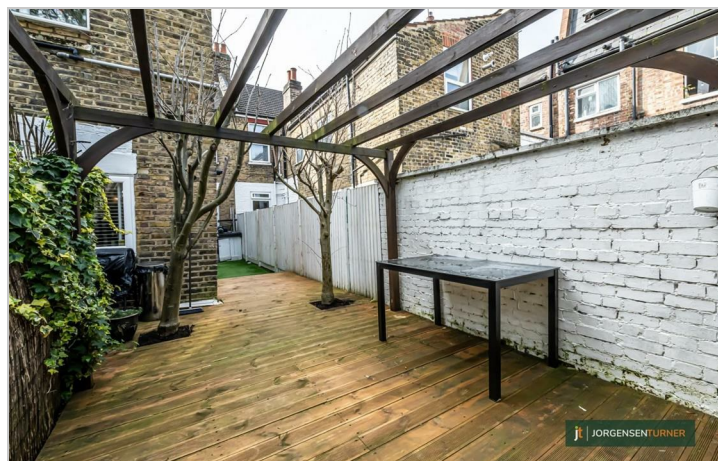
Dunraven Road,
Shepherds Bush, W12

£2,250 Per Month



Dunraven Road, Shepherds Bush, W12

£2,250 Per Month



Summary Description

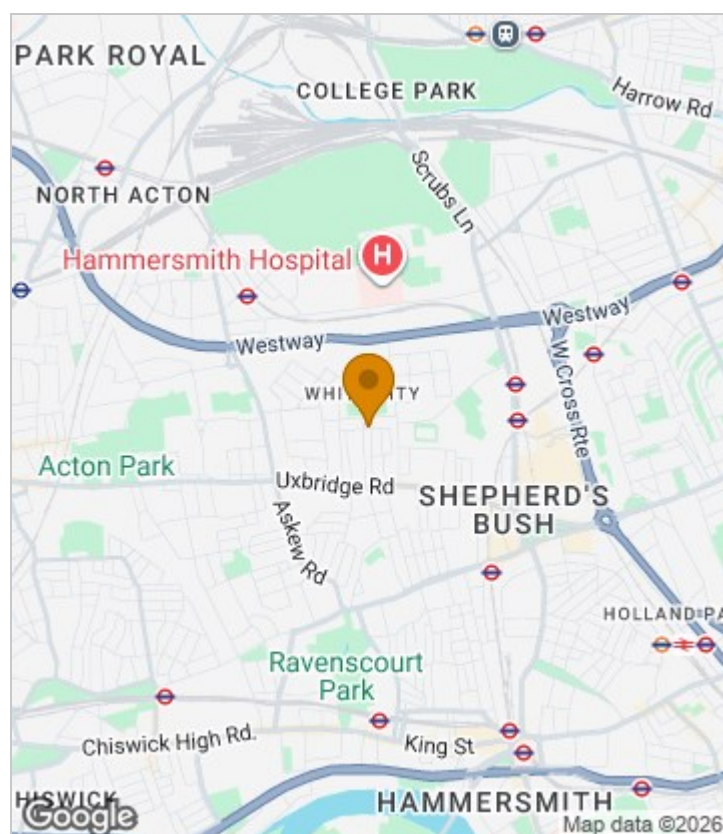
****NEW TO THE MARKET**** Jorgensen Turner are pleased to offer this spacious garden flat in the sought after Groves area of Shepherds Bush. This lovely property has two great size double bedrooms and a large open-plan kitchen/ living room leading out to a well maintain low maintenance garden. Perfect for two sharers or a small family.

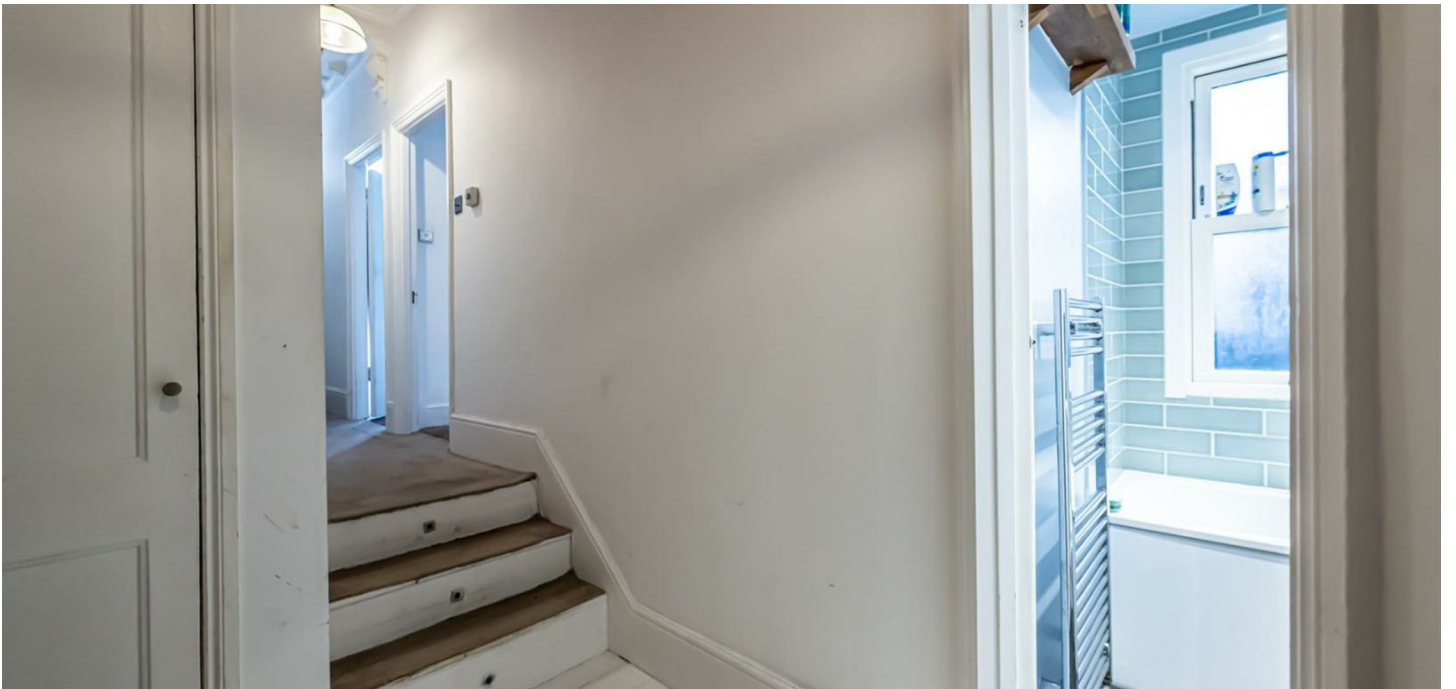
Available beginning February.

Council Tax Band D—Hammersmith & Fulham.

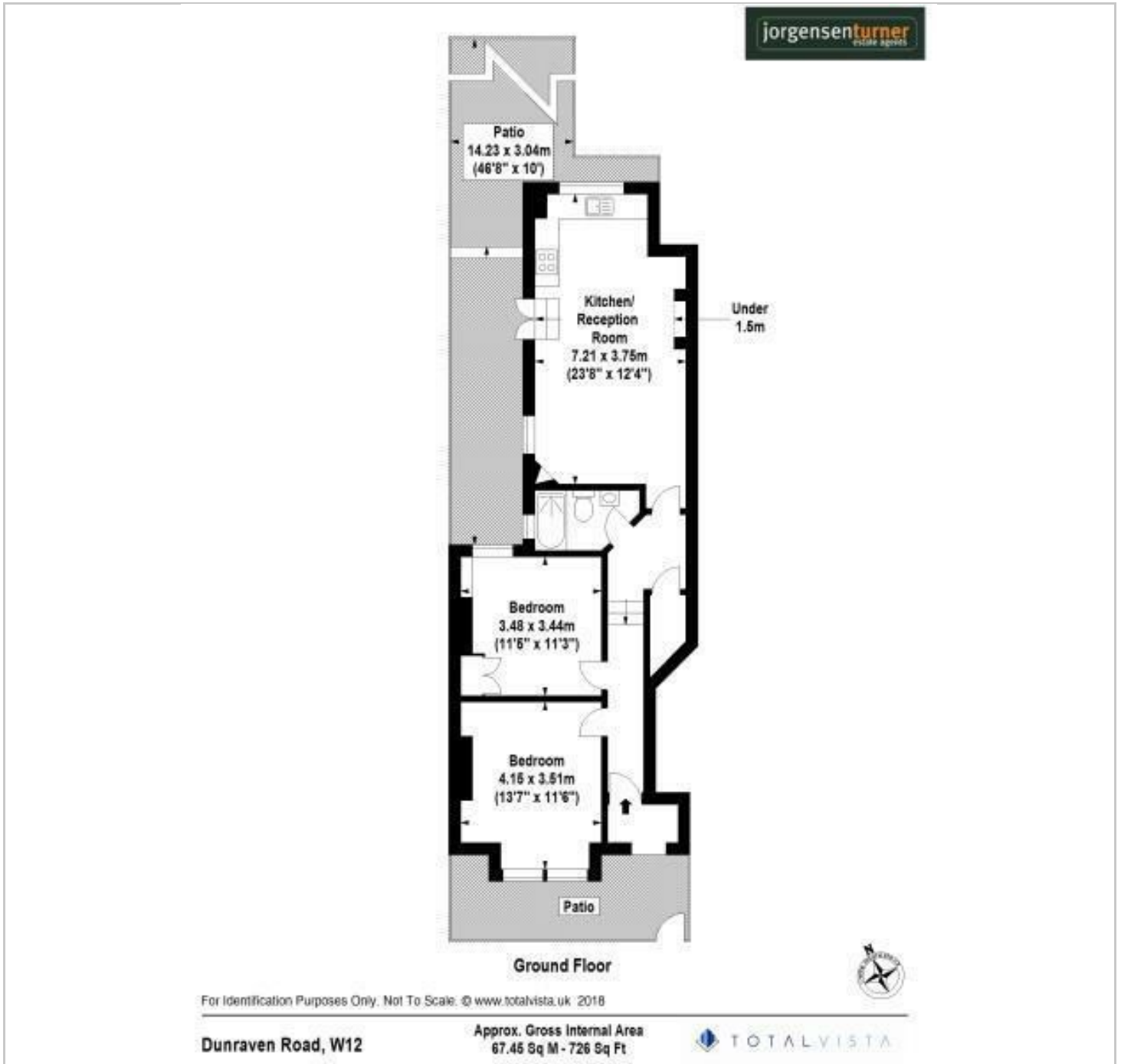
Deposit: One weeks' rent to reserve, with a security deposit of either 5 weeks' rent (for properties under £50,000pa) or 6 weeks' rent (for those over £50,000pa).

Area Map

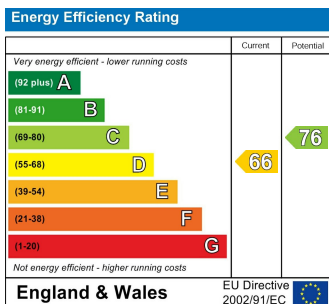




Floor Plan



Energy Efficiency Graph



Viewing

Please contact our Lettings SB Office on 0208 740 8740 if you wish to arrange a viewing appointment for this property or require further information.

- Garden flat
- Sought after location
- Available early February
- Nice open plan kitchen/living space
- Two double bedrooms
- 726sqft of space
- Pets considered
- Private entrance space

For further information contact:

Lettings SB, 234 Uxbridge Road, Shepherds Bush, London, W12 7JD

Tel: 0208 740 8740 Email: enquiries@jorgensenturner.com

<https://www.jorgensenturner.com/>

Disclaimer

These particulars, whilst believed to be accurate are set out as a general outline only for guidance and do not constitute any part of an offer or contract. Intending purchasers should not rely on them as statements of representation of fact, but must satisfy themselves by inspection or otherwise as to their accuracy. No person in this firm's employment has the authority to make or give any representation or warranty in respect of the property.

