



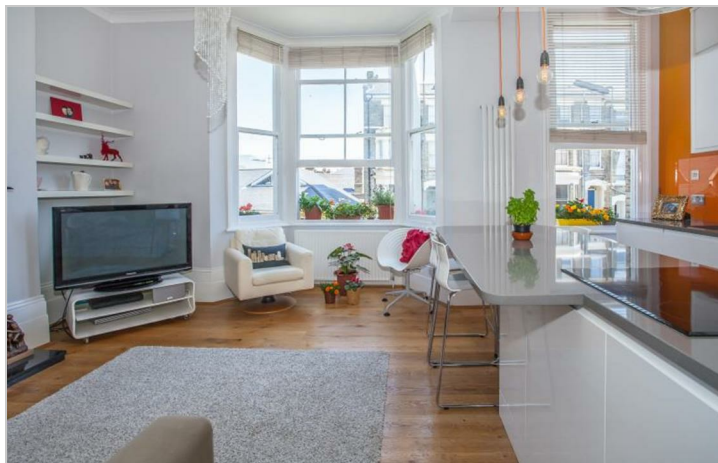
Coverdale Road,
Shepherds Bush, W12

£2,250 Per Month

 2  1  1  C

Coverdale Road, Shepherds Bush, W12

£2,250 Per Month



Summary Description

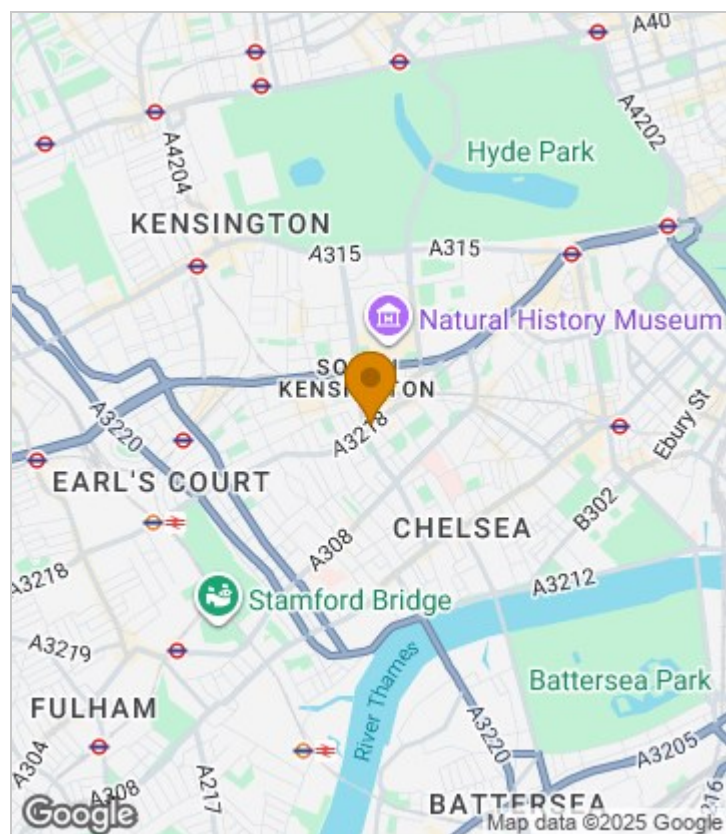
****NEW TO THE MARKET**** Jorgensen Turner are pleased to offer this wonderful two double bedroom one bathroom first floor flat. This property is in great condition throughout and is perfect for two sharers or a couple wanting a work from home space/ guest bedroom.

The apartment is available from 18th September and is offered on a part furnished basis. Early viewings are highly recommended.

Council Tax Band D—Hammersmith & Fulham

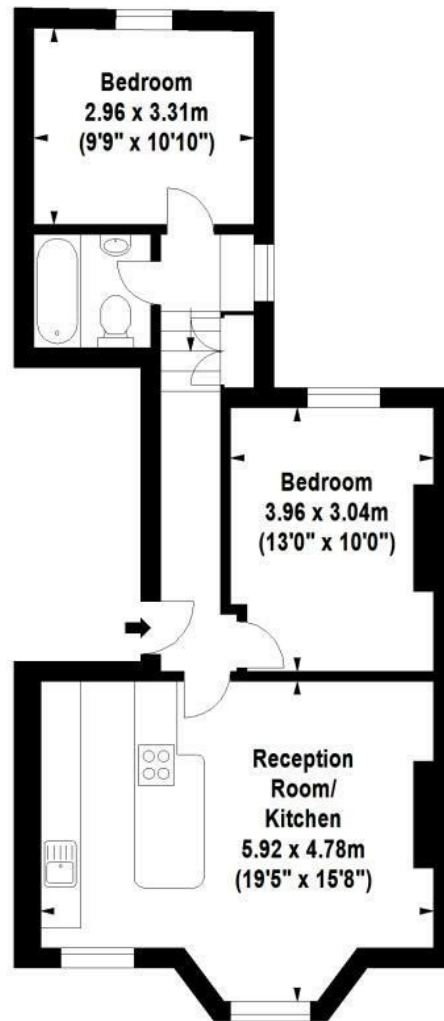
Deposit: One weeks' rent to reserve, with a security deposit of either 5 weeks' rent (for properties under £50,000pa) or 6 weeks' rent (for those over £50,000pa).

Area Map





Floor Plan



First Floor



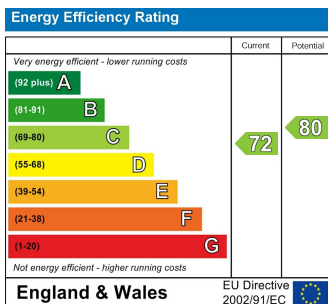
For Identification Purposes Only. Not To Scale. © www.totalvista.uk 2022

Coverdale Road, W12

Approx. Gross Internal Area
58.99 Sq M - 635 Sq Ft



Energy Efficiency Graph



Viewing

Please contact our Lettings SB Office on 0208 740 8740 if you wish to arrange a viewing appointment for this property or require further information.

- TWO DOUBLE BEDROOM FLAT
- FIRST FLOOR FLAT
- MOMENTS FROM PUBLIC TRANSPORT
- OPEN-PLAN KITCHEN / RECEPTION
- MODERN BATHROOM
- PART FURNISHED
- EXCELLENT TRANSPORT LINKS

For further information contact:

Lettings SB, 234 Uxbridge Road, Shepherds Bush, London, W12 7JD

Tel: 0208 740 8740 Email: enquiries@jorgensenturner.com

<https://www.jorgensenturner.com/>

Disclaimer

These particulars, whilst believed to be accurate are set out as a general outline only for guidance and do not constitute any part of an offer or contract. Intending purchasers should not rely on them as statements of representation of fact, but must satisfy themselves by inspection or otherwise as to their accuracy. No person in this firm's employment has the authority to make or give any representation or warranty in respect of the property.

