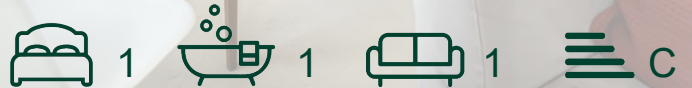




Askew Road, Shepherds
Bush, W12

£1,525 Per Month



Askew Road, Shepherds Bush, W12

£1,525 Per Month



Summary Description

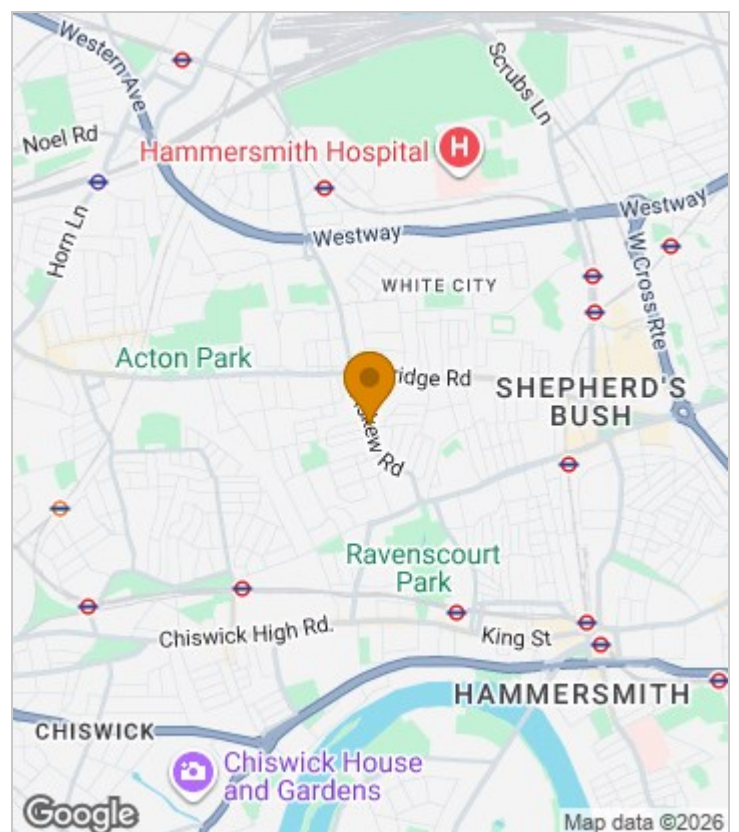
****GREAT VALUE**** One double bedroom flat on the popular Askew Road. This lovely bright flat offer a spacious living room with separate kitchen and a good sized double bedroom with plenty of storage.

Offer part furnished and available 22nd April 2025

Council Tax Band C—Hammersmith and Fulham.

Deposit: One weeks' rent to reserve, with a security deposit of either 5 weeks' rent (for properties under £50,000pa) or 6 weeks' rent (for those over £50,000pa).

Area Map



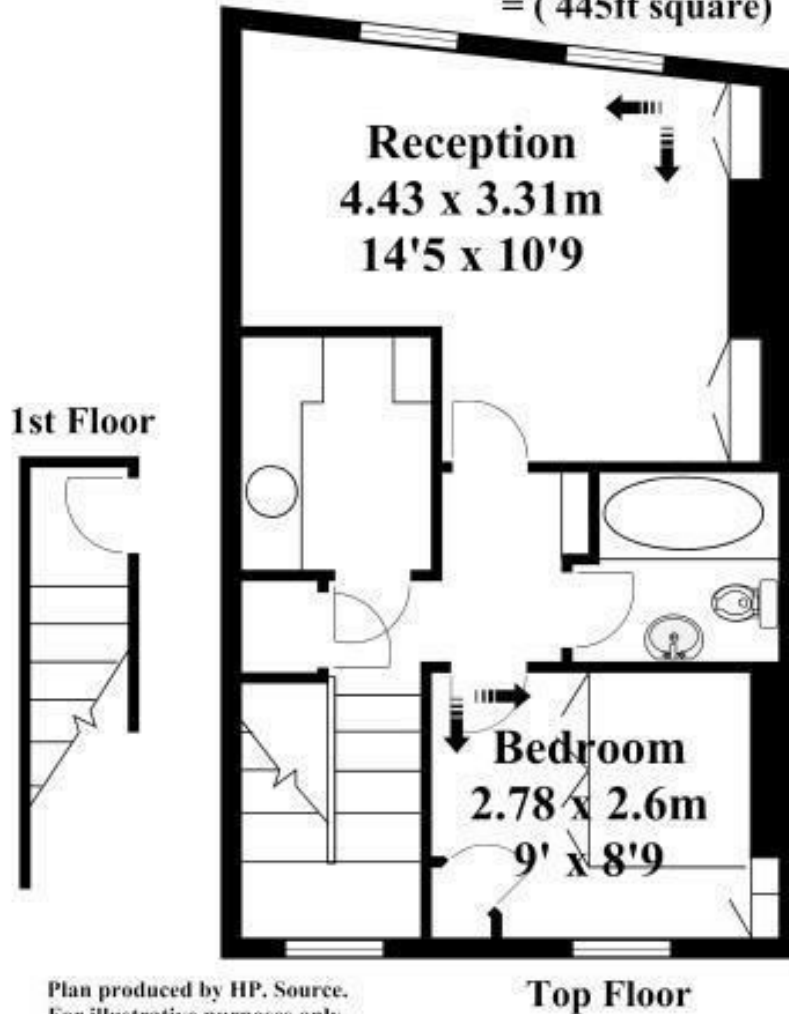


Floor Plan

**Askew Road
London
W12**

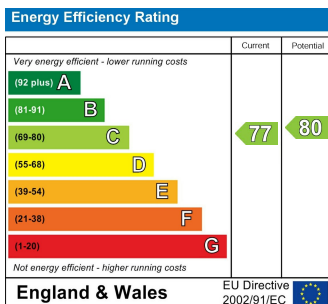


**Approx. Gross Internal Area = 41m square
= (445ft square)**



Plan produced by HP. Source.
For illustrative purposes only.
Not to scale.
Tel-07766340073

Energy Efficiency Graph



Viewing

Please contact our Lettings SB Office on 0208 740 8740 if you wish to arrange a viewing appointment for this property or require further information.

- ONE DOUBLE BEDROOM ▪ PART-FURNISHED FLAT
- ASKEW VILLAGE LOCATION ▪ GREAT VALUE
- BRIGHT AND AIRY ▪ AVAILABLE 22ND APRIL 2025

For further information contact:

Lettings SB, 234 Uxbridge Road, Shepherds Bush, London, W12 7JD

Tel: 0208 740 8740 Email: enquiries@jorgensenturner.com

<https://www.jorgensenturner.com/>

Disclaimer

These particulars, whilst believed to be accurate are set out as a general outline only for guidance and do not constitute any part of an offer or contract. Intending purchasers should not rely on them as statements of representation of fact, but must satisfy themselves by inspection or otherwise as to their accuracy. No person in this firm's employment has the authority to make or give any representation or warranty in respect of the property.