

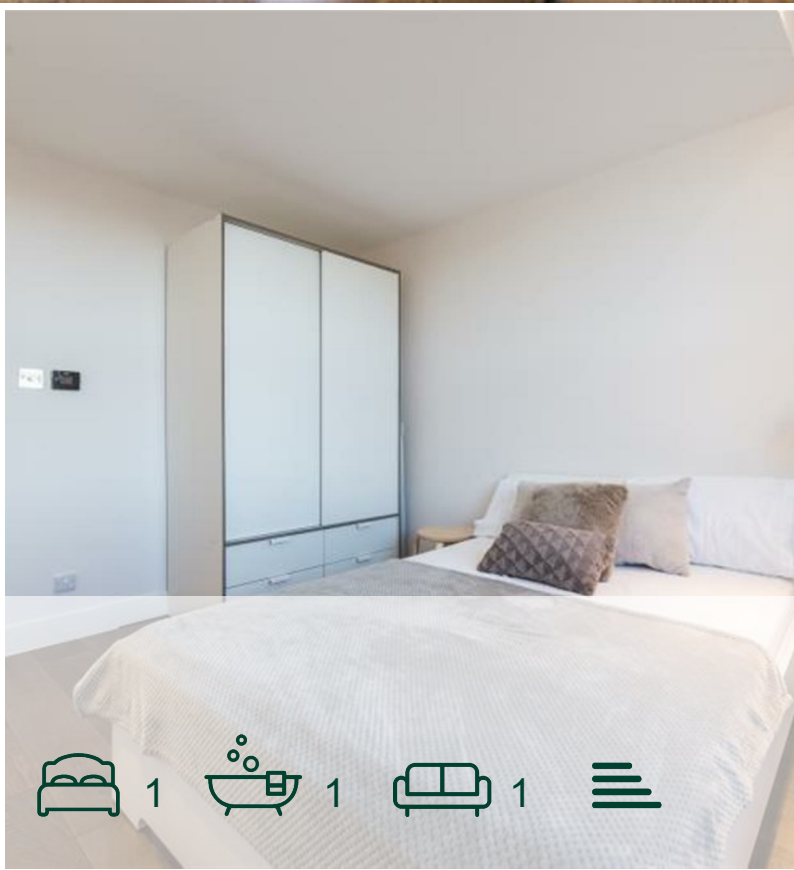


jorgensenturner
estate agents



Uxbridge Road, Shepherds
Bush, W12

£1,600 Per Month



Uxbridge Road, Shepherds Bush, W12

£1,600 Per Month



Summary Description

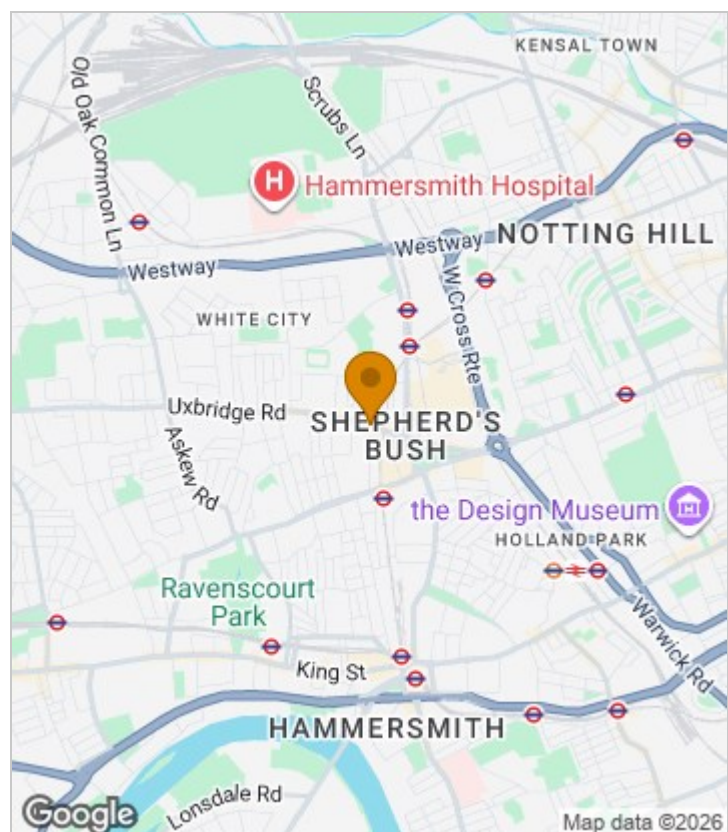
****NEW TO THE MARKET**** Jorgensen Turner estate agents Shepherds Bush are pleased to offer this very well presented one double bedroom flat. This amazing flat offers high standard of living in a convenient central location. It comprises a beautiful open plan reception, modern shower room and a good size double bedroom with wooden floors throughout. The flat is offered on a furnished basis and it is available 17th June 2026

EPC Rating: B

Council tax: band C

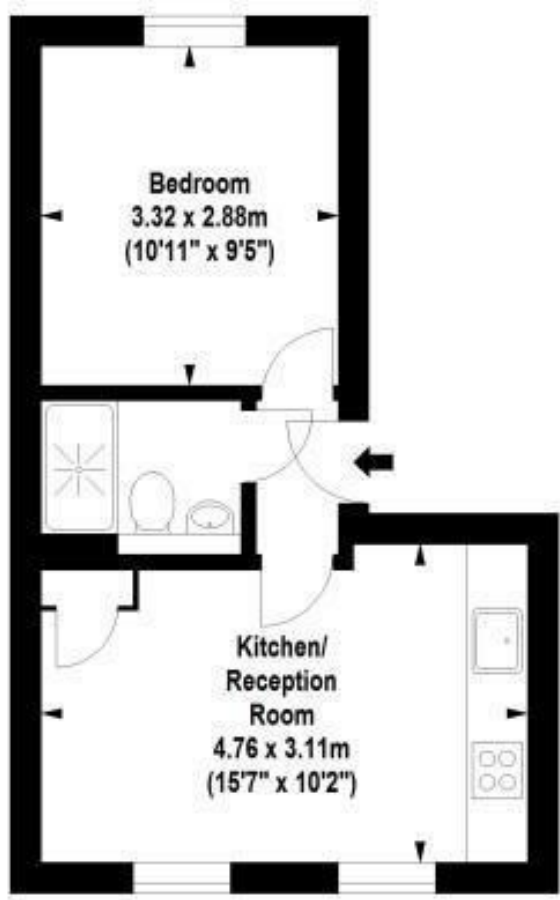
Deposit: A holding deposit of 1 weeks rent will be required to secure the property and a Security deposit of 5 weeks rent (for rents under £50,000 pa) or 6 weeks (for rents over £50,000 pa)

Area Map





Floor Plan



Second Floor

For Identification Purposes Only. Not To Scale. © www.totalvista.uk 2018

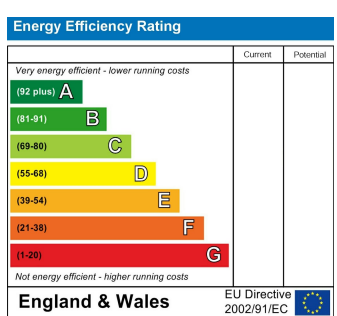


Uxbridge Road, W12

Approx. Gross Internal Area
28.80 Sq M - 310 Sq Ft



Energy Efficiency Graph



Viewing

Please contact our Lettings SB Office on 0208 740 8740 if you wish to arrange a viewing appointment for this property or require further information.

- One bedroom flat
- Modern and stylish
- Furnished
- Available 17th June 2026
- Bright and Airy
- Central location

For further information contact:

Lettings SB, 234 Uxbridge Road, Shepherds Bush, London, W12 7JD

Tel: 0208 740 8740 Email: enquiries@jorgensenturner.com

<https://www.jorgensenturner.com/>

Disclaimer

These particulars, whilst believed to be accurate are set out as a general outline only for guidance and do not constitute any part of an offer or contract. Intending purchasers should not rely on them as statements of representation of fact, but must satisfy themselves by inspection or otherwise as to their accuracy. No person in this firms employment has the authority to make or give any representation or warranty in respect of the property.