







jt | JORGENSENTURNER



Adelaide Grove,
Shepherds Bush, London,
£1,750 Per Month



 1  1  1 

Adelaide Grove, Shepherds Bush, London, £1,750 Per Month



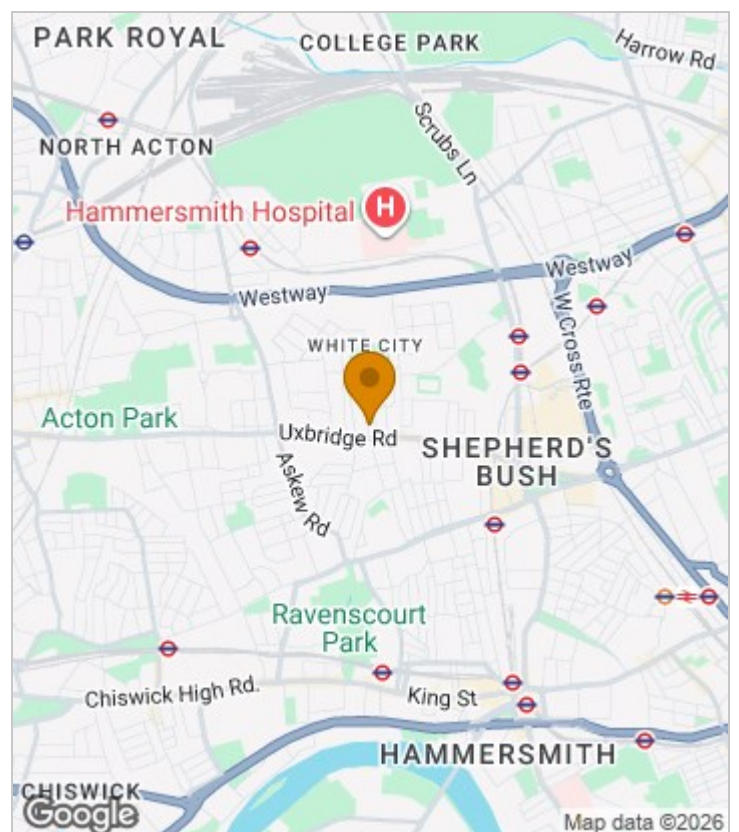
Summary Description

**** NEW TO THE MARKET**** Jorgensen Turner estate agents Shepherds Bush are delighted to offer this gorgeous one double bedroom flat. This beautiful apartment is tastefully decorated throughout. This property offers a high standard of living with modern fixtures and fittings and meticulous attention to detail. This bespoke apartment comprises; a modern kitchen with integrated appliances including a washer dryer, full size fridge freezer and dishwasher, a good sized reception room, a stylish three-piece bathroom suite and a double bedroom with built in wardrobes and under-bed storage. Further benefits include wooden flooring throughout. Early viewings are highly recommended and this flat is available from 17th November 2025

Council tax band: D - Hammersmith and Fulham
EPC Rating: D

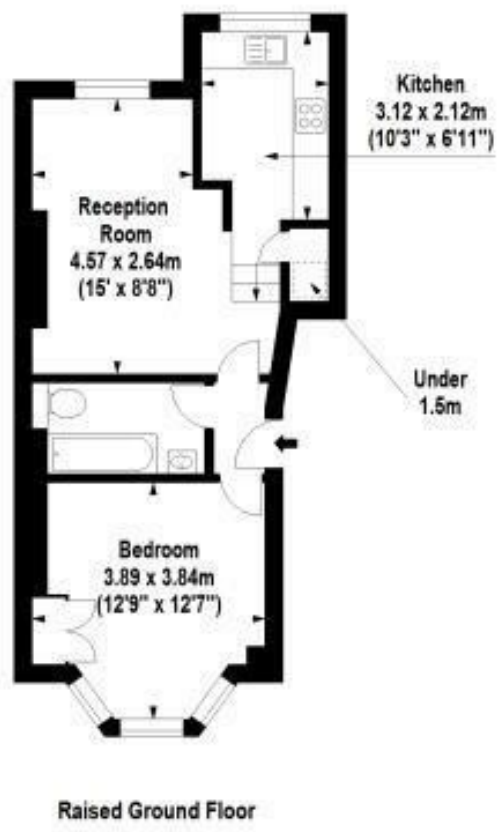
Deposit: One weeks' rent to reserve, with a security deposit of either 5 weeks' rent (for properties under £50,000pa) or 6 weeks' rent (for those over £50,000pa).

Area Map





Floor Plan

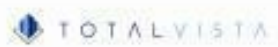


For Identification Purposes Only. Not To Scale. © www.totalvista.uk 2018

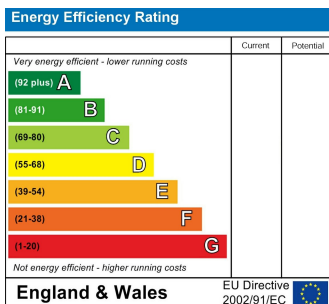


Adelaide Grove, W12

Approx. Gross Internal Area
43.76 Sq M - 471 Sq Ft



Energy Efficiency Graph



Viewing

Please contact our Lettings SB Office on 0208 740 8740 if you wish to arrange a viewing appointment for this property or require further information.

- One double bedroom flat
- High ceilings
- Furnished
- Sought after area
- Bright and airy
- Wooden floors
- Council tax band D
- Available 17th November

For further information contact:

Lettings SB, 234 Uxbridge Road, Shepherds Bush, London, W12 7JD

Tel: 0208 740 8740 Email: enquiries@jorgensenturner.com

<https://www.jorgensenturner.com/>

Disclaimer

These particulars, whilst believed to be accurate are set out as a general outline only for guidance and do not constitute any part of an offer or contract. Intending purchasers should not rely on them as statements of representation of fact, but must satisfy themselves by inspection or otherwise as to their accuracy. No person in this firm's employment has the authority to make or give any representation or warranty in respect of the property.