

Shakespeare Road, Acton,
London, W3

£1,400 Per Month



1



1



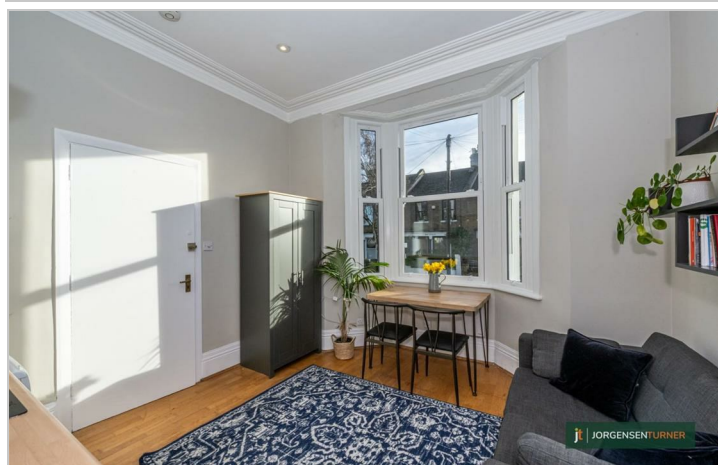
1



D

Shakespeare Road, Acton, London, W3

£1,400 Per Month



Summary Description

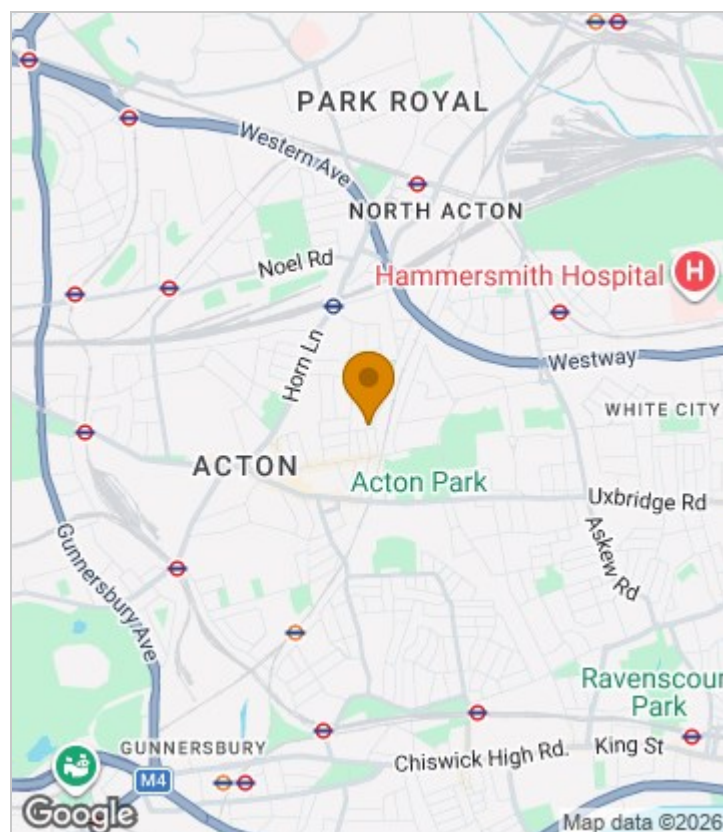
****NEW TO THE MARKET**** Jorgensen Turner are pleased to offer this wonderful one bedroom flat in the sought after area of "Poets corner" in Acton. Ideal for a single professional this lovely property is offered in excellent condition throughout and just moments after from Acton Main line and Churchfield road which has plenty of cafes, independent shops as well as larger supermarkets and public transport.

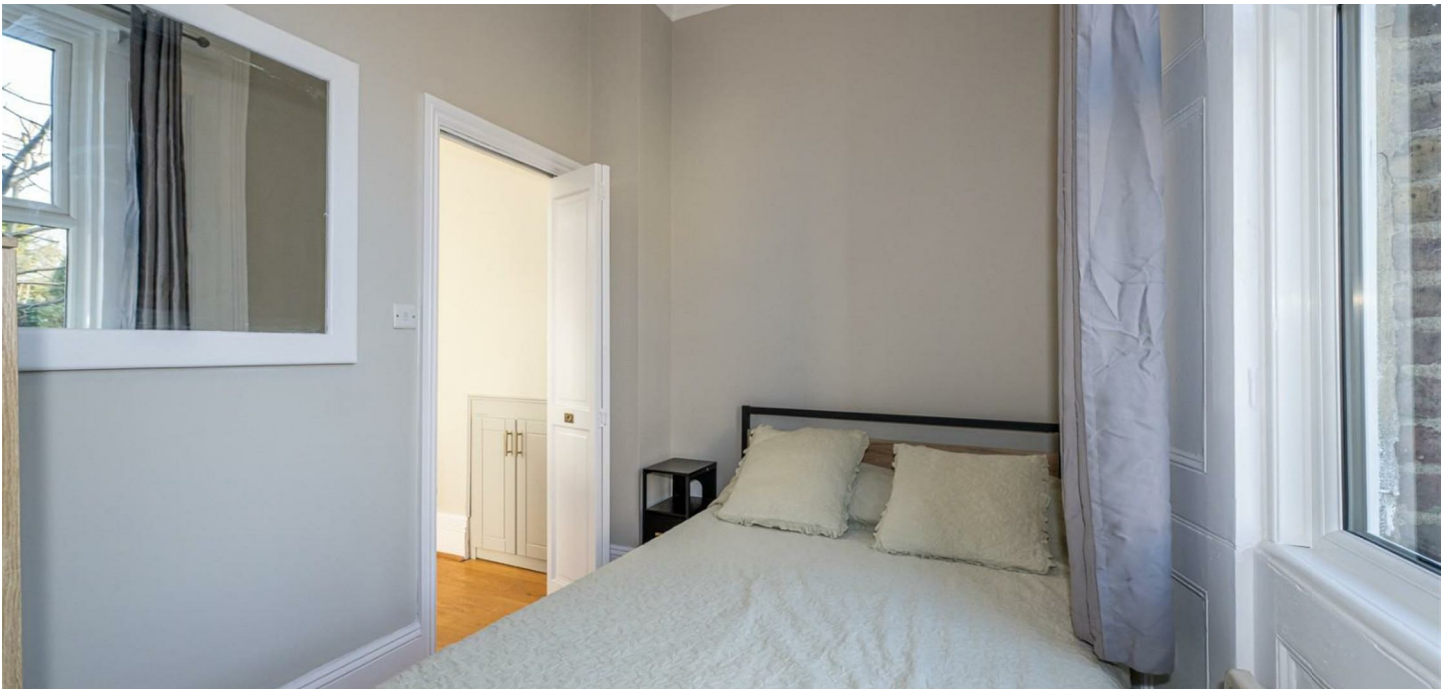
Offer furnished and available now, early viewing are recommended.

Council tax: band A Ealing Borough

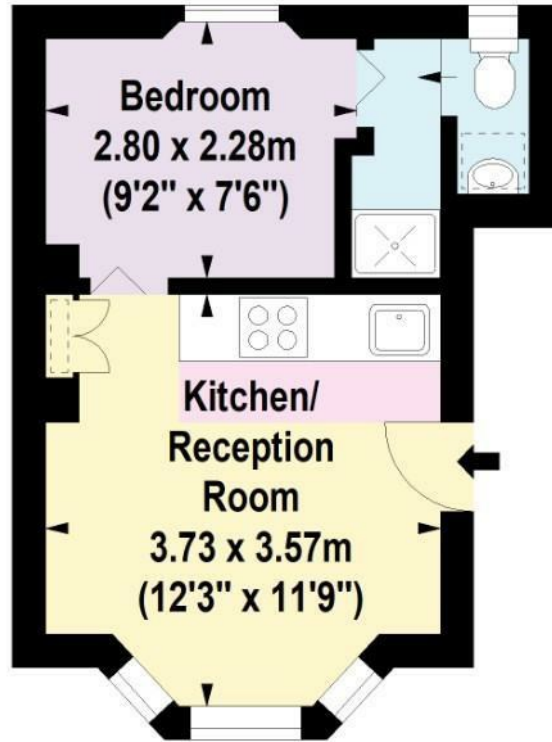
A holding deposit of 1 weeks rent will be required to secure the property and a Security deposit of 5 weeks rent (for rents under £50,000 pa) or 6 weeks (for rents over £50,000 pa)

Area Map





Floor Plan



Raised Ground Floor

For Identification Purposes Only. Not To Scale. © www.totalvista.uk 2026

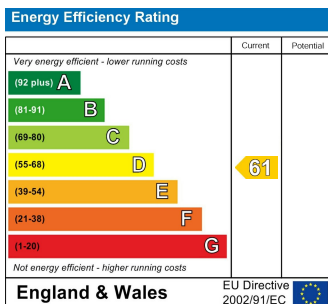


Shakespeare Road, W3

Approx. Gross Internal Area
21.46 Sq M - 231 Sq Ft



Energy Efficiency Graph



Viewing

Please contact our Lettings SB Office on 0208 740 8740 if you wish to arrange a viewing appointment for this property or require further information.

- One bedroom flat
- Excellent condition throughout
- Available now
- Close to public transport
- Ideal for a single professional
- Furnished
- Modern and chic

For further information contact:

Lettings SB, 234 Uxbridge Road, Shepherds Bush, London, W12 7JD

Tel: 0208 740 8740 Email: enquiries@jorgensenturner.com

<https://www.jorgensenturner.com/>

Disclaimer

These particulars, whilst believed to be accurate are set out as a general outline only for guidance and do not constitute any part of an offer or contract. Intending purchasers should not rely on them as statements of representation of fact, but must satisfy themselves by inspection or otherwise as to their accuracy. No person in this firm's employment has the authority to make or give any representation or warranty in respect of the property.