



jt | JORGENSENTURNER



Bentworth Road,
Shepherds Bush

£2,500 Per Month



jt 2 1 1 D

Bentworth Road, Shepherds Bush

£2,500 Per Month



Summary Description

**** REFURBISHED THROUGHOUT ****Jorgensen Turner estate agents Shepherds Bush are pleased to offer this beautifully refurbished two double bedroom house on a quiet residential road. The ground floor offers a bright and airy reception room, separate kitchen with direct access to a large private garden. The first floor benefits from two double bedrooms and a brand new modern bathroom. This beautifully presented house is available immediately on an unfurnished basis. It is located within easy access to White City and Wood Lane stations, easy access to A40 and close to Westfield Shopping centre.

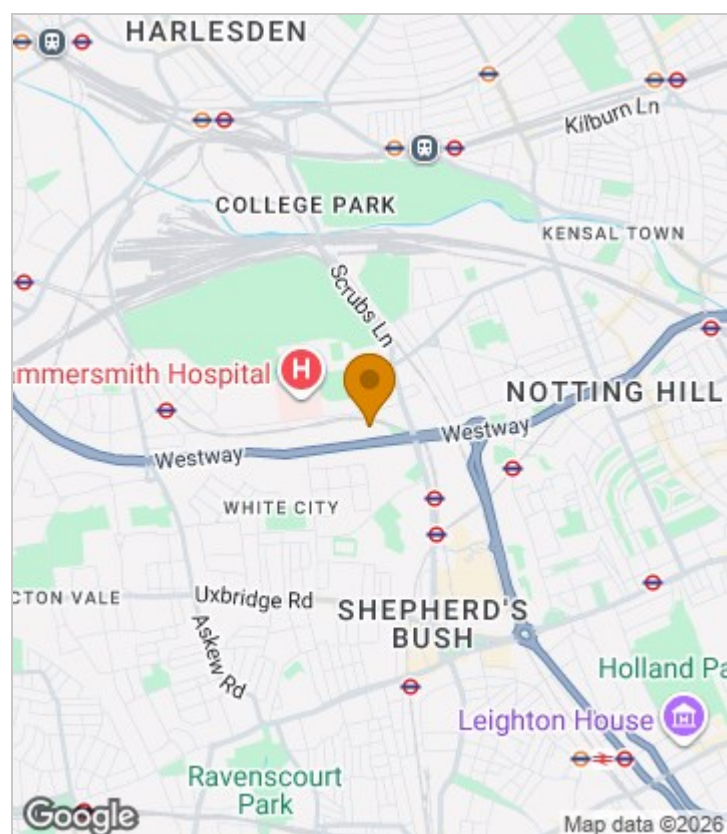
Available now, offered unfurnished.

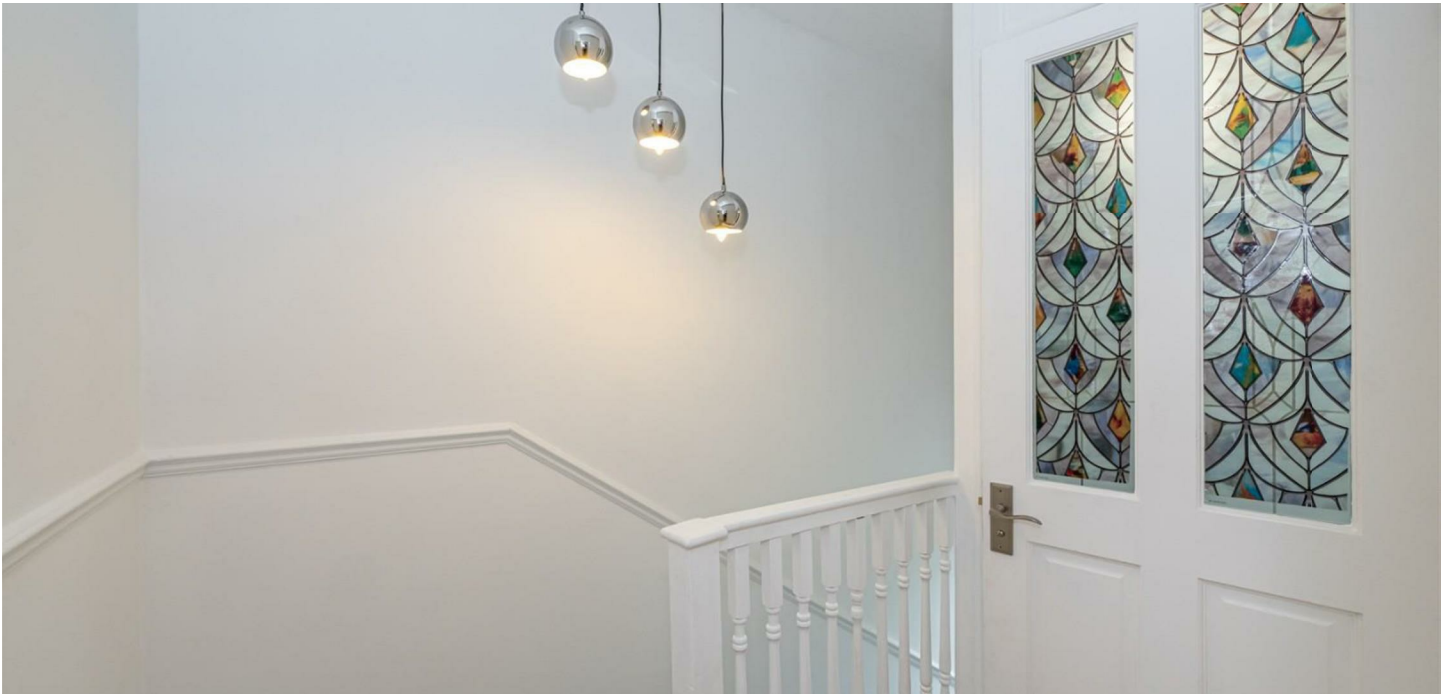
Council tax band: D Hammersmith and Fulham

EPC Rating: D

Deposit: One weeks' rent to reserve, with a security deposit of either 5 weeks' rent (for properties under £50,000pa) or 6 weeks' rent (for those over £50,000pa).

Area Map

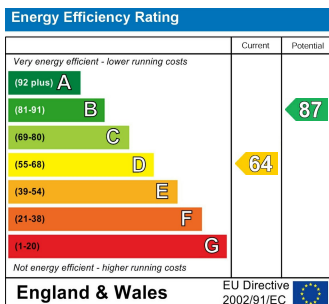




Floor Plan



Energy Efficiency Graph



Viewing

Please contact our Lettings SB Office on 0208 740 8740 if you wish to arrange a viewing appointment for this property or require further information.

- Refurbished throughout
- Brand new kitchen & bathroom
- Unfurnished
- Perfect for 2 sharers/couple
- Two double bedrooms
- Large garden
- Available NOW

For further information contact:

Lettings SB, 234 Uxbridge Road, Shepherds Bush, London, W12 7JD

Tel: 0208 740 8740 Email: enquiries@jorgensenturner.com

<https://www.jorgensenturner.com/>

Disclaimer

These particulars, whilst believed to be accurate are set out as a general outline only for guidance and do not constitute any part of an offer or contract. Intending purchasers should not rely on them as statements of representation of fact, but must satisfy themselves by inspection or otherwise as to their accuracy. No person in this firm's employment has the authority to make or give any representation or warranty in respect of the property.

