



jt | JORGENSENTURNER



Ormiston Grove, London

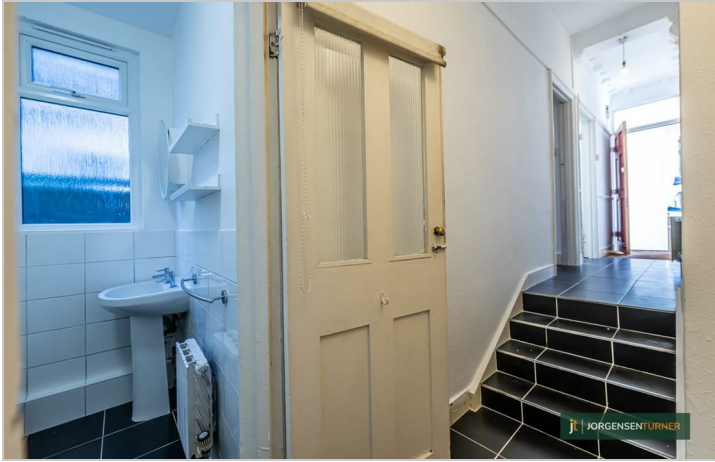
£2,100 Per Month



jt 3 1 1 D jt

# Ormiston Grove, London

£2,100 Per Month



## Summary Description

Jorgensen Turner Estate Agents are delighted to introduce this charming Victorian apartment, situated in the ever peaceful Ormiston Grove, W12. This 755sqft property artfully blends the feel of historical style with the comforts of modern urban living. It boasts three bedrooms and one bathroom, each space matched by the classic charm of Victorian-style fireplaces and lofty ceilings, while the neutral finish throughout the apartment complements its traditional appeal.

The apartment's distinctive red brick façade with decorative white trim captures the essence of period charm. Inside, you will find additional built-in storage, adding a practical touch to the property's aesthetic appeal. The relaxing pebbled courtyard garden is a standout feature, offering a serene and low-maintenance outdoor space; perfect for relaxation.

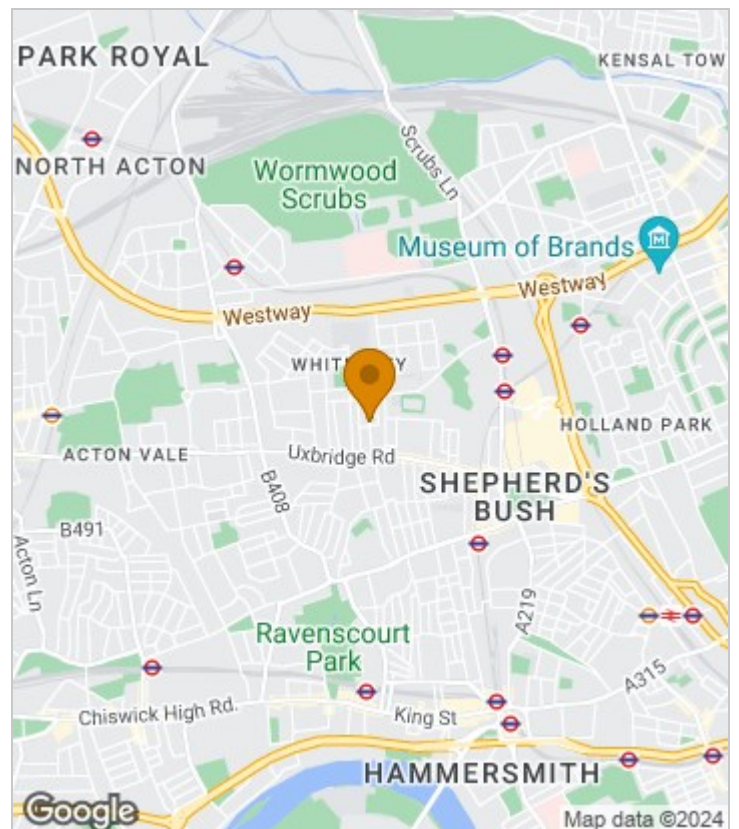
Nestled in the heart of Shepherd's Bush, this property enjoys the peacefulness of Victorian streets while being conveniently close to the area's rich cultural landmarks, lush parks, and trendy amenities. Its prime location ensures easy access to Shepherd's Bush Market and White City Underground stations. Families will appreciate the proximity to top local schools, including St Clement's and St James' CE Primary. Additionally, the shopping delights of Westfield White City are just a stone's throw away.

This Victorian apartment is an exemplary fusion of historical charm and contemporary convenience, making it an ideal choice for those who desire to experience a piece of London's vibrant history, coupled with the ease of modern-day living. Available immediately and offered on a part-furnished basis.

Council Tax Band D—Hammersmith & Fulham.

Deposit: One weeks' rent to reserve, with a security deposit of either 5 weeks' rent (for properties under £50,000pa) or 6 weeks' rent (for those over £50,000pa).

## Area Map

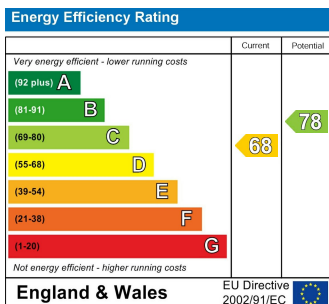




# Floor Plan



## Energy Efficiency Graph



## Viewing

Please contact our Lettings SB Office on 0208 740 8740 if you wish to arrange a viewing appointment for this property or require further information.

- TRADITIONAL VICTORIAN ARCHITECTURE
- FANTASTIC LOCATION
- CLOSE TO ICONIC HISTORICAL LANDMARKS
- NEARBY LOCAL PARKS
- CHARMING 755sqft APARTMENT
- IDEAL FOR FAMILIES, COUPLES, OR SHARERS
- TRADITIONAL / ORIGINAL FIRE PLACES
- PEBBLED REAR COURTYARD GARDEN
- EXCELLENT TRANSPORT CONNECTIVITY
- NEAR TOP SCHOOLS AND SHOPPING OUTLETS

For further information contact:

Lettings SB, 234 Uxbridge Road, Shepherds Bush, London, W12 7JD

Tel: 0208 740 8740 Email: [enquiries@jorgensenturner.com](mailto:enquiries@jorgensenturner.com)

<https://www.jorgensenturner.com/>

### Disclaimer

These particulars, whilst believed to be accurate are set out as a general outline only for guidance and do not constitute any part of an offer or contract. Intending purchasers should not rely on them as statements of representation of fact, but must satisfy themselves by inspection or otherwise as to their accuracy. No person in this firm's employment has the authority to make or give any representation or warranty in respect of the property.

