



jt | JORGENSENTURNER



Goldhawk Road, London

£1,450 Per Month

jt



1



1



1

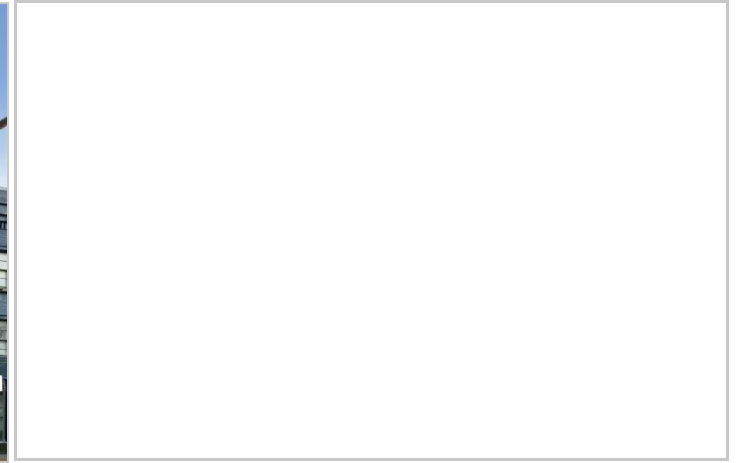


C

jt

Goldhawk Road, London

£1,450 Per Month



Summary Description

Jorgensen Turner Estate Agents are delighted to introduce this beautiful Georgian period apartment—a true gem located on Goldhawk Road, W12. Offering a beautifully efficient living space, this one-bedroom, one-bathroom apartment is a perfect blend of modern convenience and historical elegance.

This first-floor property captivates with its open-plan layout, merging a superbly laid out kitchen with a welcoming living area, ideal for both relaxation and friendly get-togethers. The interior is bathed in natural light streaming through large windows, which compliment the sleek vinyl wood flooring and the tastefully neutral colour scheme.

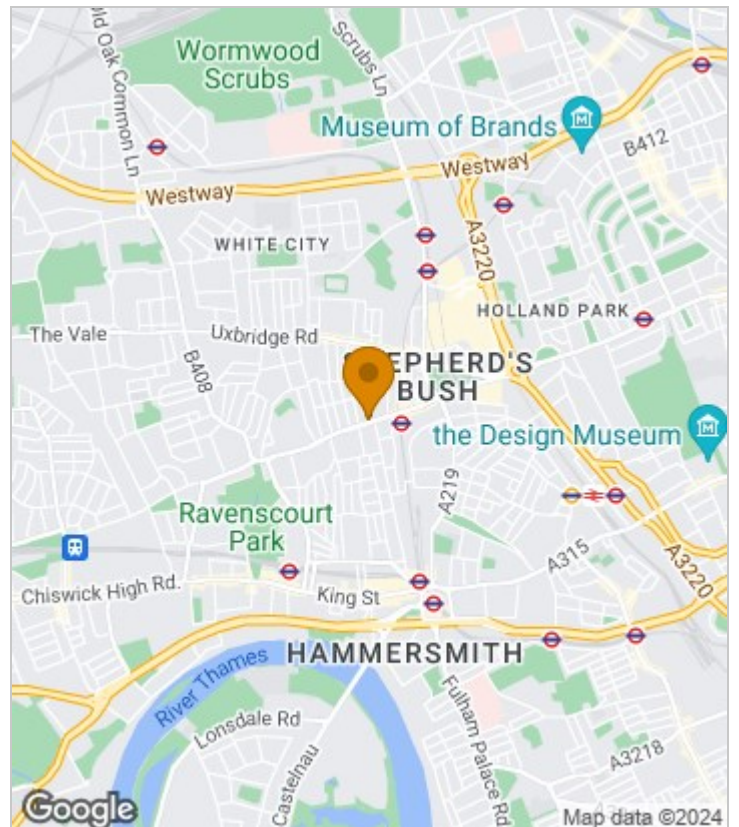
The bedroom offers a sanctuary away from the hustle and bustle of city life featuring beautiful flooring and ample storage solutions, creating a perfect haven after a busy day at work. This home also includes a fully equipped bathroom, complete with a space-saving corner shower, reflecting both functionality and style.

Nestled in the heart of the vibrant and culturally rich Shepherd's Bush, this home offers an exceptional urban living experience. Its prime location places it steps away from historical landmarks, beautiful parks, and a diverse array of dining and entertainment options. This property is particularly ideal for individuals or couples seeking a stylish and comfortable home in one of London's most dynamic neighbourhoods. The apartment is presented furnished and is available from the end of January.

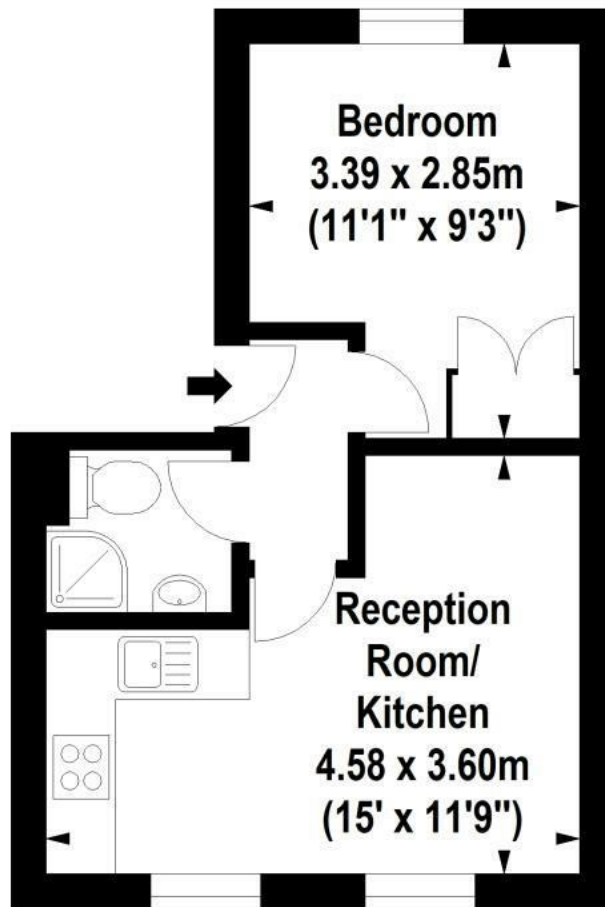
Council Tax Band C—Hammersmith & Fulham.

Deposit: One weeks' rent to reserve, with a security deposit of either 5 weeks' rent (for properties under £50,000pa) or 6 weeks' rent (for those over £50,000pa).

Area Map



Floor Plan



First Floor



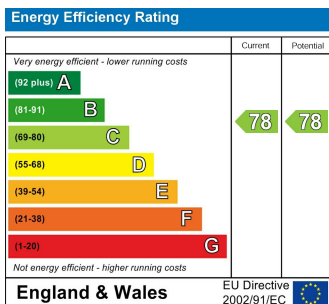
For Identification Purposes Only. Not To Scale. © www.totalvista.uk 2022

Goldhawk Road, W12

Approx. Gross Internal Area
26.75 Sq M - 288 Sq Ft



Energy Efficiency Graph



Viewing

Please contact our Lettings SB Office on 0208 740 8740 if you wish to arrange a viewing appointment for this property or require further information.

- ONE-BEDROOM APARTMENT
- OPEN-PLAN KITCHEN/RECEPTION
- WOOD FLOORING EFFECT
- FULLY EQUIPPED BATHROOM
- PERFECT FOR INDIVIDUALS OR COUPLES
- FIRST FLOOR AWAY FROM TRAFFIC
- FLOODED WITH NATURAL LIGHT
- NEUTRAL COLOUR SCHEME THROUGHOUT
- CENTRAL LOCATON
- GEORGIAN PERIOD CHARM

For further information contact:

Lettings SB, 234 Uxbridge Road, Shepherds Bush, London, W12 7JD

Tel: 0208 740 8740 Email: enquiries@jorgensenturner.com

<https://www.jorgensenturner.com/>

Disclaimer

These particulars, whilst believed to be accurate are set out as a general outline only for guidance and do not constitute any part of an offer or contract. Intending purchasers should not rely on them as statements of representation of fact, but must satisfy themselves by inspection or otherwise as to their accuracy. No person in this firms employment has the authority to make or give any representation or warranty in respect of the property.

