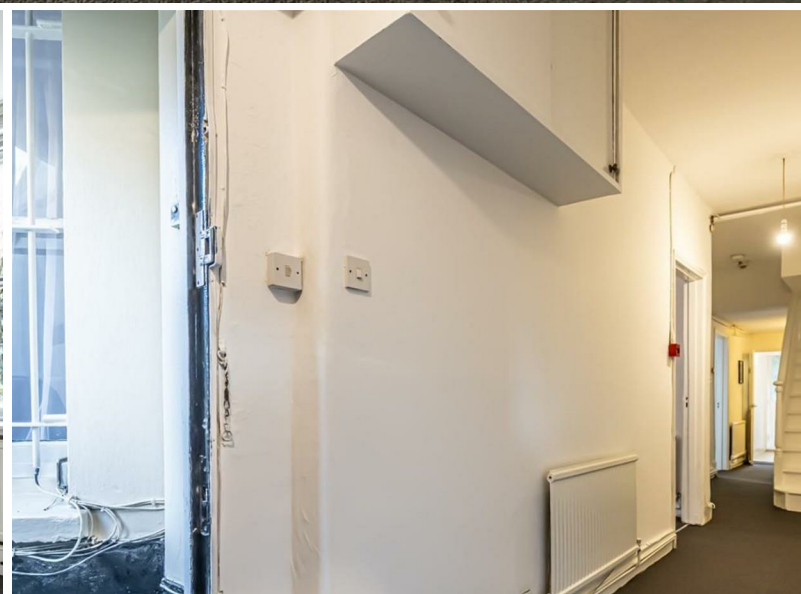




jt | JORGENSENTURNER



Uxbridge Road, London

£1,675 Per Month



1



1



1



D



Uxbridge Road, London

£1,675 Per Month



Summary Description

Jorgensen Turner Estate Agents are delighted to introduce this recently redecorated, semi-detached one-bedroom apartment in the dynamic Shepherd's Bush area. This property is a unique gem, boasting a substantial living space of 773sqft, adorned with plush carpeting and high ceilings. It further impresses with a charming private patio garden, seamlessly blending spaciousness and elegance into its charismatic charm.

The apartment has been thoughtfully refurbished to cater to modern living tastes and lifestyles. It features an inviting and superbly-proportioned living area that promises comfort and style. The bedroom, a serene sanctuary, is designed to ensure restful nights and peaceful mornings.

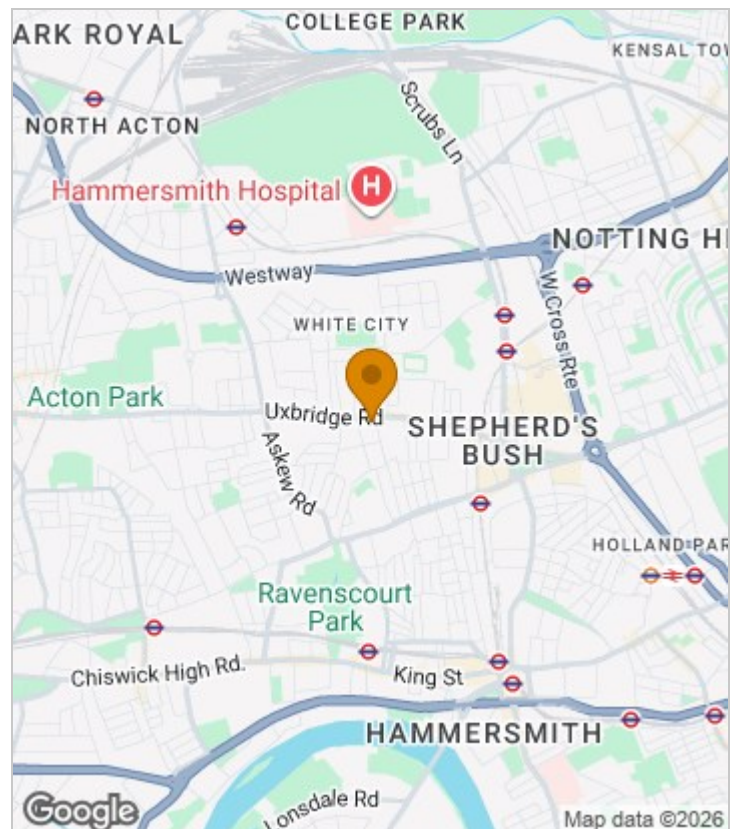
In addition to its internal appeal, the location of this property is unparalleled. It is situated within proximity to esteemed cultural landmarks such as Shepherd's Bush Theatre, and is well-served by excellent transport links, including Shepherd's Bush and White City stations. This makes it an ideal choice for those who seek a peaceful yet connected living experience in the heart of London.

Offered to the market on a furnished basis, this apartment invites you to imprint your personal style and create a home that truly reflects your tastes. It stands as a rare find in Shepherd's Bush, perfectly marrying the tranquility of a private home with the vibrancy of city life. Available immediately, this property is not just a living space but a statement of sophisticated urban living.

Council Tax Band D—Hammersmith & Fulham.

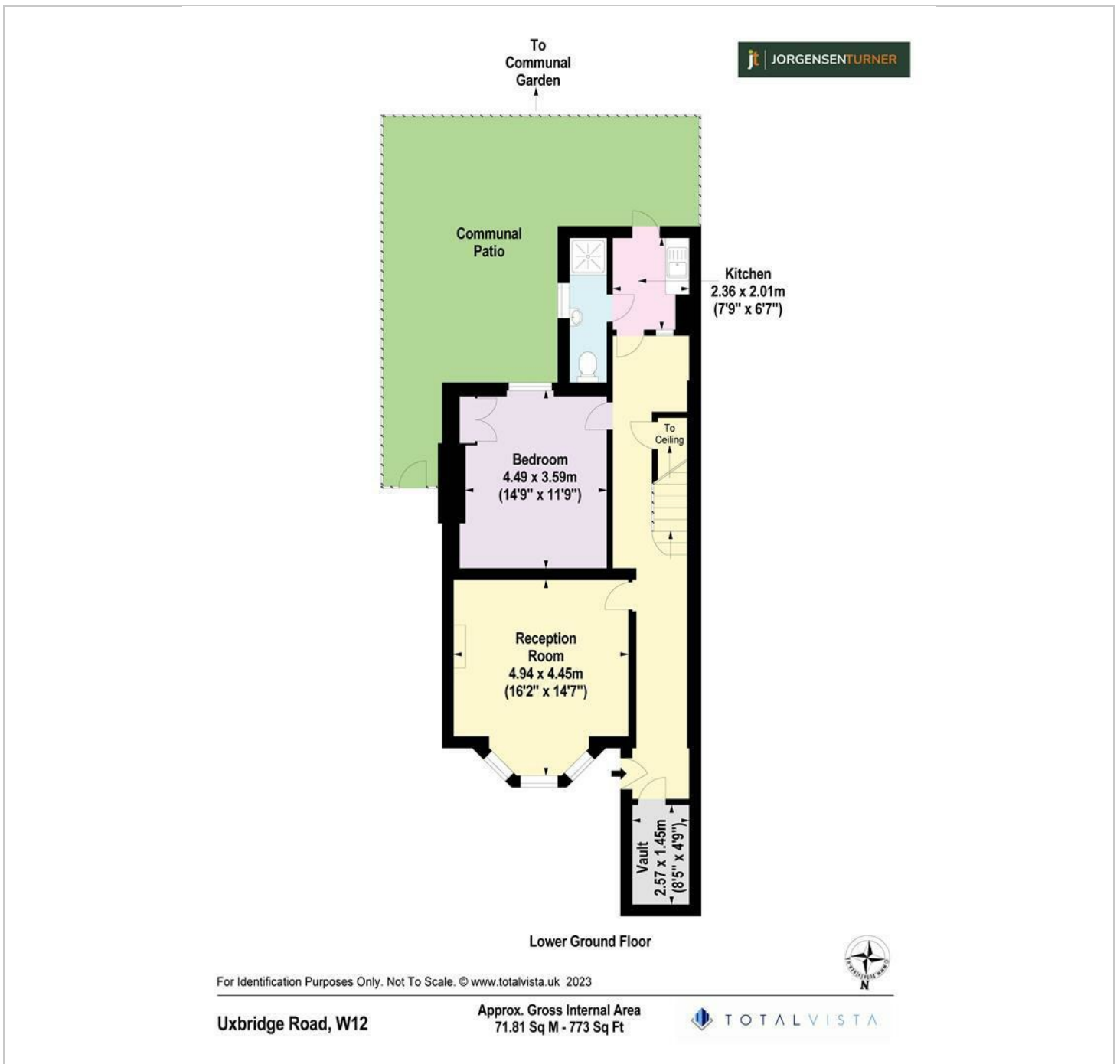
Deposit: One weeks' rent to reserve, with a security deposit of either 5 weeks' rent (for properties under £50,000pa) or 6 weeks' rent (for those over £50,000pa).

Area Map

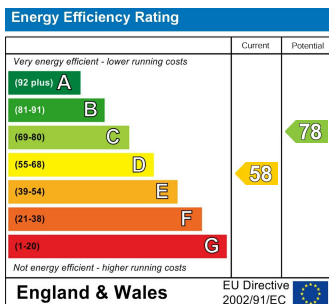




Floor Plan



Energy Efficiency Graph



Viewing

Please contact our Lettings SB Office on 0208 740 8740 if you wish to arrange a viewing appointment for this property or require further information.

- RECENTLY REDECORATED
- PRIVATE PATIO GARDEN
- WELL-PROPORTIONED THROUGHOUT
- FANTASTIC LOCATION
- AVAILABLE IMMEDIATELY
- SPACIOUS 773sqft AREA
- SEMI-DETACHED PROPERTY
- LARGE BEDROOM AREA
- EXCELLENT TRANSPORT LINKS

For further information contact:

Lettings SB, 234 Uxbridge Road, Shepherds Bush, London, W12 7JD

Tel: 0208 740 8740 Email: enquiries@jorgensenturner.com

<https://www.jorgensenturner.com/>

Disclaimer

These particulars, whilst believed to be accurate are set out as a general outline only for guidance and do not constitute any part of an offer or contract. Intending purchasers should not rely on them as statements of representation of fact, but must satisfy themselves by inspection or otherwise as to their accuracy. No person in this firm's employment has the authority to make or give any representation or warranty in respect of the property.