



jt | JORGENSENTURNER



Askham Road, London

£3,000 Per Month



jt 2 2 1 C

Askham Road, London

£3,000 Per Month



Summary Description

Jorgensen Turner Estate Agents are excited to introduce a unique and spacious 1,100sqft split-level detached house, freshly available on the market. Located on the charming Askham Road, this property stands out with its private entrance and proximity to the vibrant Shepherd's Bush Market, the historic Bush Theatre, and the iconic White City Stadium.

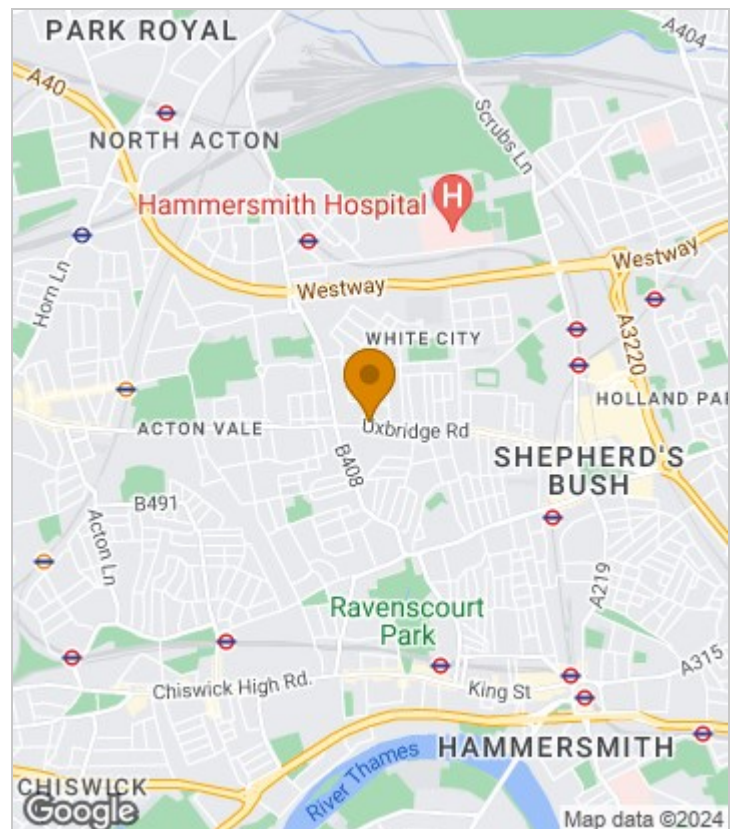
This two-bedroom, two-bathroom house offers an exceptional multi-tiered living experience, ideal for both families and professionals. At the heart of this home is an open-plan kitchen, equipped with top-range appliances, perfect for both hosting and intimate evenings. This then leads to a large entertaining patio, further accompanied by an additional private patio garden accessible from one of the bedrooms. The diverse flooring, with both tiles and carpets, elegantly divides private spaces from social areas.

Nestled in a lively and diverse neighbourhood, celebrated for its arts and music scene, the house is a sanctuary of modern living. Its prime location ensures easy access to an assortment of amenities and superb transport links to central London. Offered unfurnished, this superb quite home offers a canvas for personalisation. This peaceful retreat set away from the hustle and bustle of city life is available immediately with early viewings taking place now.

Council Tax Band F—Hammersmith & Fulham.

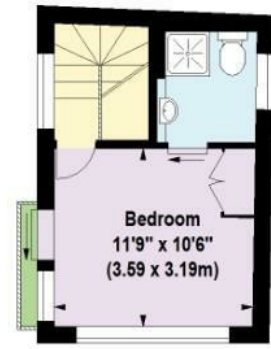
Deposit: One weeks' rent to reserve, with a security deposit of either 5 weeks' rent (for properties under £50,000pa) or 6 weeks' rent (for those over £50,000pa).

Area Map

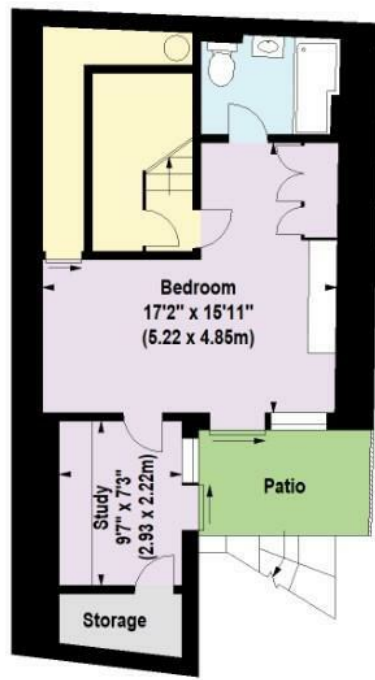




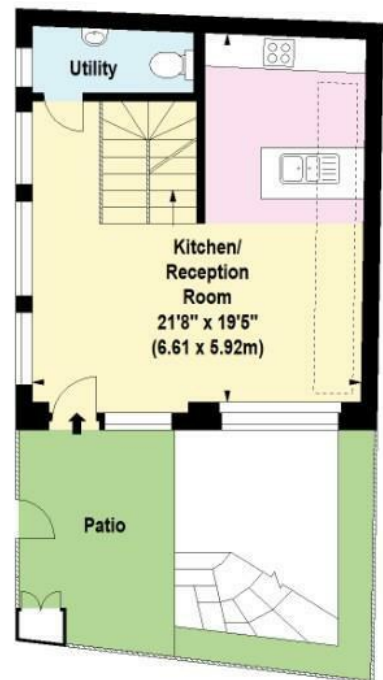
Floor Plan



First Floor



Lower Ground Floor



Ground Floor



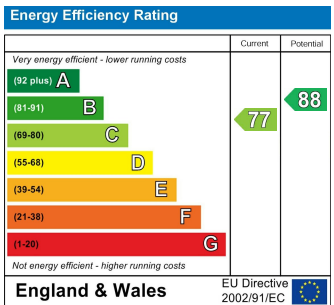
For Identification Purposes Only. Not To Scale. © www.totalvista.uk 2023

Askham Road, W12

Approx. Gross Internal Area
104.88 Sq M - 1129 Sq Ft
(Including Storage)



Energy Efficiency Graph



Viewing

Please contact our Lettings SB Office on 0208 740 8740 if you wish to arrange a viewing appointment for this property or require further information.

- S P A C I O U S 1100sqft
- FANTASTIC LOCATION
- DETACHED HOUSE
- OWN PRIVATE ENTRANCE
- TWO DOUBLE BEDROOMS
- TWO BATHROOMS
- OPEN-PLAN KITCHEN / RECEPTION
- TWO PRIVATE PATIOS
- PRIVATE HOME OFFICE SPACE
- BEAUTIFUL NEIGHBOURHOOD
- AVAILABLE IMMEDIATELY

For further information contact:

Lettings SB, 234 Uxbridge Road, Shepherds Bush, London, W12 7JD

Tel: 0208 740 8740 Email: enquiries@jorgensenturner.com

<https://www.jorgensenturner.com/>

Disclaimer

These particulars, whilst believed to be accurate are set out as a general outline only for guidance and do not constitute any part of an offer or contract. Intending purchasers should not rely on them as statements of representation of fact, but must satisfy themselves by inspection or otherwise as to their accuracy. No person in this firms employment has the authority to make or give any representation or warranty in respect of the property.

