



jt | JORGENSENTURNER



## Sinclair Gardens, London

£1,650 Per Month



1



1



1



C



# Sinclair Gardens, London

£1,650 Per Month



## Summary Description

\*\*\* INCLUDING HEATING AND WATER RATES \*\*\* Jorgensen Turner Estate Agents are delighted to introduce this charming one-bedroom, first-floor conversion flat—a true gem in the heart of Shepherds Bush.

Upon entering this beautiful apartment, you are immediately greeted by a warm and bright living room which gives a welcoming atmosphere to the property. The high ceilings throughout the flat enhance the sense of space, creating an airy and open feel. The living area seamlessly flows into a fully fitted kitchen, equipped with modern appliances.

The separate bedroom stands as a cosy retreat, offering a peaceful space to unwind. The thoughtful layout of this apartment maximises both comfort and functionality, making it an ideal sanctuary from city life.

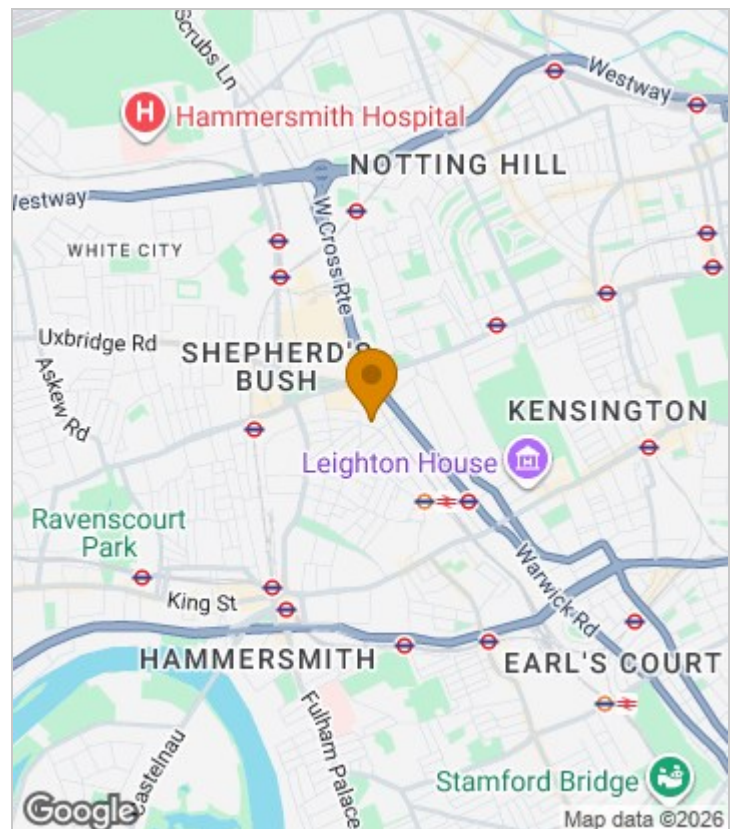
Nestled in an ultra-convenient location, this property is just a stone's throw away from the vibrant hub of Shepherds Bush. Tenants will enjoy easy access to the Central Line tube station, placing the city's heart within easy reach. The allure of Kensington High Street and the peaceful greenery of Holland Park are also nearby, offering a perfect balance of city excitement and natural beauty.

This furnished apartment is available immediately with early viewings highly recommended.

Council Tax Band C—Hammersmith & Fulham.

Deposit: One weeks' rent to reserve, with a security deposit of either 5 weeks' rent (for properties under £50,000pa) or 6 weeks' rent (for those over £50,000pa).

## Area Map

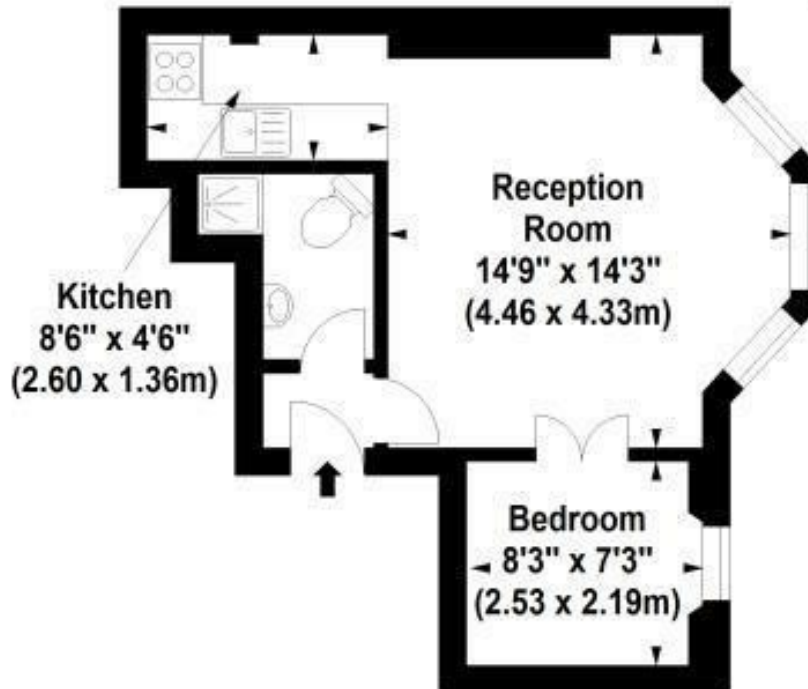




## Floor Plan

# Sinclair Gardens, W14

Approx. Gross Internal Area \*  
338 Sq Ft - 31.40 Sq M



First Floor

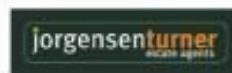
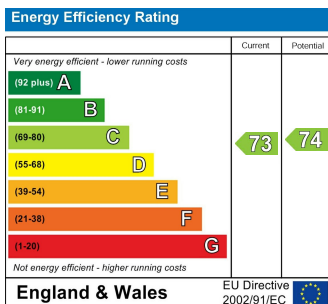


Illustration For Identification Purposes Only. Not To Scale  
\*Floor Plans Drawn According To RICS Guidelines  
© www.alanaiken.com 2016

## Energy Efficiency Graph



## Viewing

Please contact our Lettings SB Office on 0208 740 8740 if you wish to arrange a viewing appointment for this property or require further information.

- CHARMING ONE-BEDROOM APARTMENT
- LARGE LIVING ROOM
- MODERN FITTED KITCHEN
- FANTASTIC LAYOUT
- CLOSE TO LOCAL AMENITIES
- PRIME SHEPHERDS BUSH LOCATION
- HIGH CEILINGS THROUGHOUT
- COSY BEDROOM RETREAT
- EXCELLENT TRANSPORT CONNECTIVITY
- AVAILABLE IMMEDIATELY

For further information contact:

Lettings SB, 234 Uxbridge Road, Shepherds Bush, London, W12 7JD

Tel: 0208 740 8740 Email: [enquiries@jorgensenturner.com](mailto:enquiries@jorgensenturner.com)

<https://www.jorgensenturner.com/>

### Disclaimer

These particulars, whilst believed to be accurate are set out as a general outline only for guidance and do not constitute any part of an offer or contract. Intending purchasers should not rely on them as statements of representation of fact, but must satisfy themselves by inspection or otherwise as to their accuracy. No person in this firm's employment has the authority to make or give any representation or warranty in respect of the property.