







jt | JORGENSENTURNER



Willow Vale, Shepherds  
Bush, London

£1,700 Per Month



jt |  1  1  1  D jt

# Willow Vale, Shepherds Bush, London

£1,700 Per Month



## Summary Description

Jorgensen Turner Estate Agents are delighted to introduce this charming one-bedroom period conversion located in Willow Vale, W12. This property is ideally situated just a short walk from the bustling cultural sites of Westfield London and Shepherd's Bush Empire, providing the perfect blend of convenience and style.

The apartment has been beautifully crafted to maximise its 352sqft of living space, showcasing a modern kitchen equipped with the latest appliances, a sleek bathroom with a walk-in shower, and a bright open-plan living area that also serves as a practical workspace. On the exterior of the building, the traditional aesthetics are maintained with a classic red brick façade, white-trimmed windows, and a beautifully slate-tiled roof.

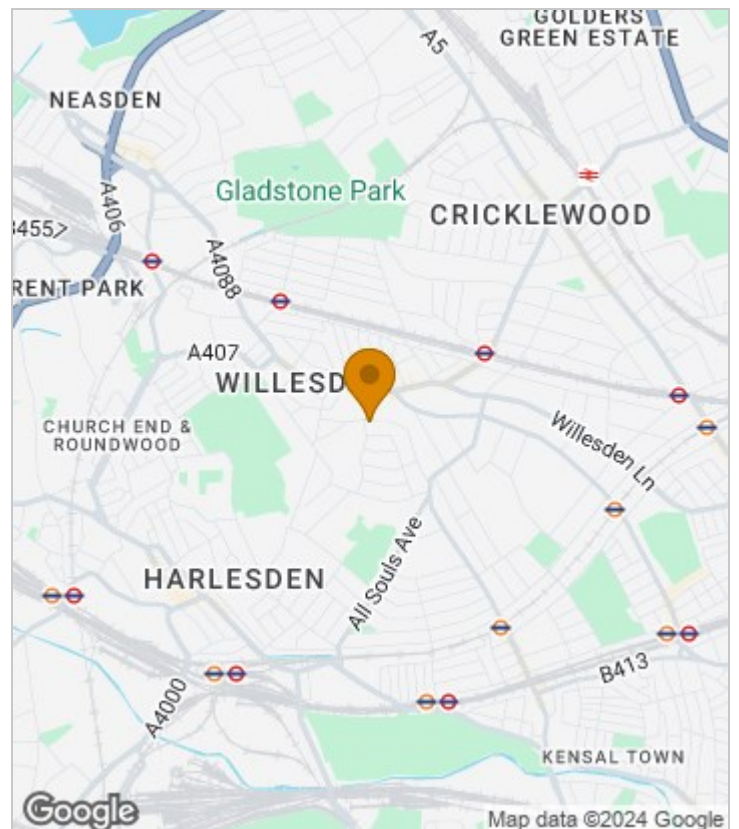
Nestled in a lively neighbourhood known for its extensive range of shopping, dining, and entertainment options, and exceptional transport links via the nearby Shepherd's Bush and White City stations, this home merges contemporary interior elegance with superb urban access. Offered on a furnished basis, this apartment invites personalisation, making it an excellent choice for professionals or couples looking to thrive in a dynamic London lifestyle.

Available from the beginning of June, early viewings are recommended.

Council Tax—Hammersmith & Fulham

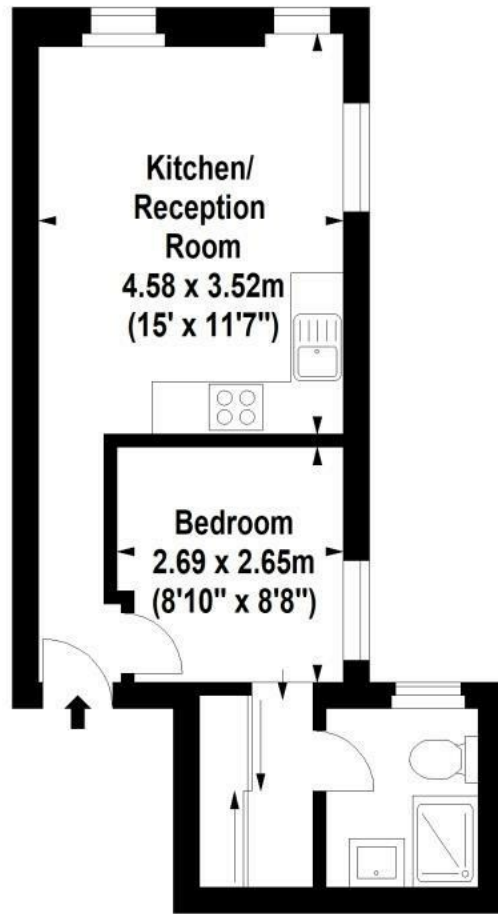
Deposit: One weeks' rent to reserve, with a security deposit of either 5 weeks' rent (for properties under £50,000pa) or 6 weeks' rent (for those over £50,000pa).

## Area Map





# Floor Plan



First Floor

For Identification Purposes Only. Not To Scale. © www.totalvista.uk 2022

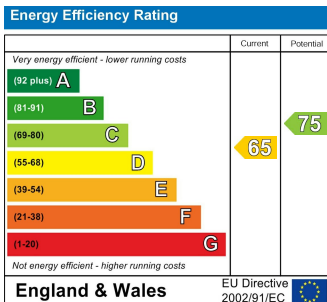


Willow Vale, W12

Approx. Gross Internal Area  
32.70 Sq M - 352 Sq Ft



## Energy Efficiency Graph



## Viewing

Please contact our Lettings SB Office on 0208 740 8740 if you wish to arrange a viewing appointment for this property or require further information.

- ONE BEDROOM APARTMENT
- BEAUTIFUL PERIOD CONVERSION
- 352sqft LAYOUT
- INTEGRATED KITCHEN APPLIANCES
- SLEEK MODERN BATHROOM
- LARGE OPEN-PLAN LIVING SPACE
- AVAILABLE EARLY JUNE
- MODERN FINISH THROUGHOUT

For further information contact:

Lettings SB, 234 Uxbridge Road, Shepherds Bush, London, W12 7JD

Tel: 0208 740 8740 Email: [enquiries@jorgensenturner.com](mailto:enquiries@jorgensenturner.com)

<https://www.jorgensenturner.com/>

### Disclaimer

These particulars, whilst believed to be accurate are set out as a general outline only for guidance and do not constitute any part of an offer or contract. Intending purchasers should not rely on them as statements of representation of fact, but must satisfy themselves by inspection or otherwise as to their accuracy. No person in this firm's employment has the authority to make or give any representation or warranty in respect of the property.

