



J | JORGENSENTURNER



Spencer Road, Acton,
London

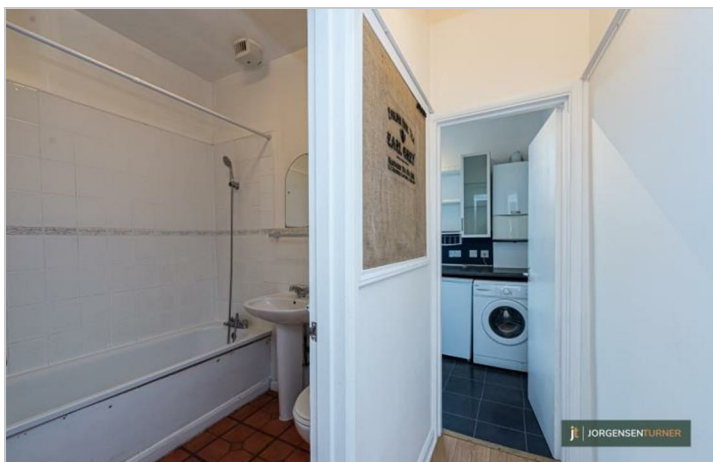
£1,400 Per Month



0 1 1 C

Spencer Road, Acton, London

£1,400 Per Month



Summary Description

Jorgensen Turner Estate Agents proudly present this charming first-floor Victorian period conversion studio apartment, newly available to the market. Located on Spencer Road in Acton, W3, this property offers 359sqft of well-designed living space, perfect for those seeking both comfort and style.

The apartment showcases a spacious studio room with elegant hardwood flooring, providing a warm and inviting atmosphere. The compact kitchen features stainless steel appliances and benefits from ample natural light, making it a delightful space for cooking enthusiasts. The bathroom includes a bathtub, ensuring a relaxing and convenient experience for residents.

The classic Victorian exterior of the property boasts traditional brickwork with white-painted trim, a striking blue front door, and a small front garden with mature plants, adding to its charm. Settled in the vibrant and family-friendly Acton neighbourhood, this property offers a wonderful retreat from the hustle and bustle of city life.

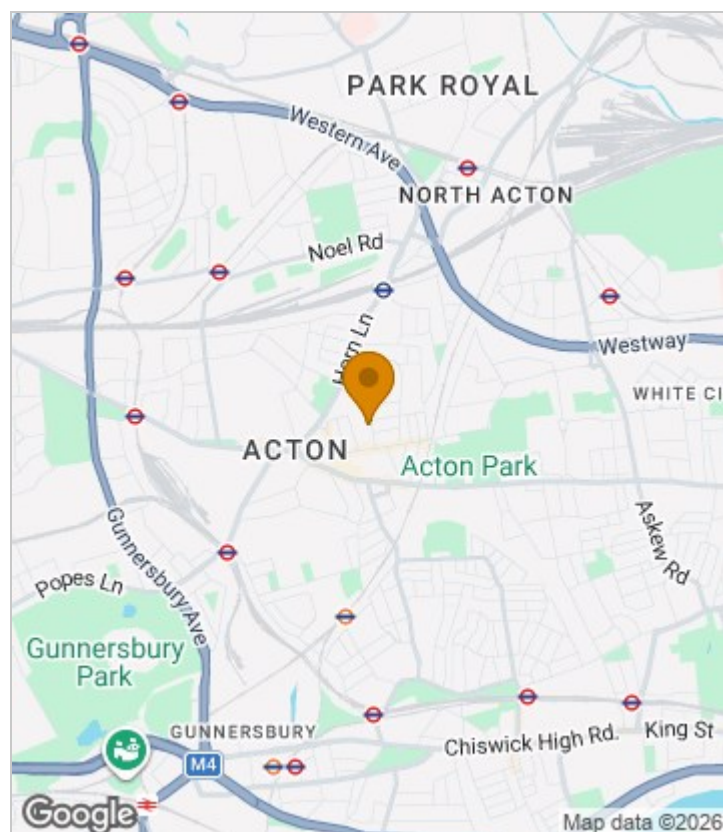
Ideally situated for excellent transport links, North Acton Station is just a 4-minute walk away, with Acton Main Line and Harlesden Station also within easy reach. The area is rich with diverse amenities, including a variety of shopping centres, eateries, and entertainment venues. Notable nearby attractions include Gunnersbury Park and Museum, Acton Park, and Acton Market, offering plenty of recreational opportunities.

This unfurnished apartment, available from mid-August, includes built-in storage and provides a blank canvas for personalisation. With its blend of suburban charm and urban vibrancy, it presents an ideal living environment.

Council Tax Band B—Ealing.

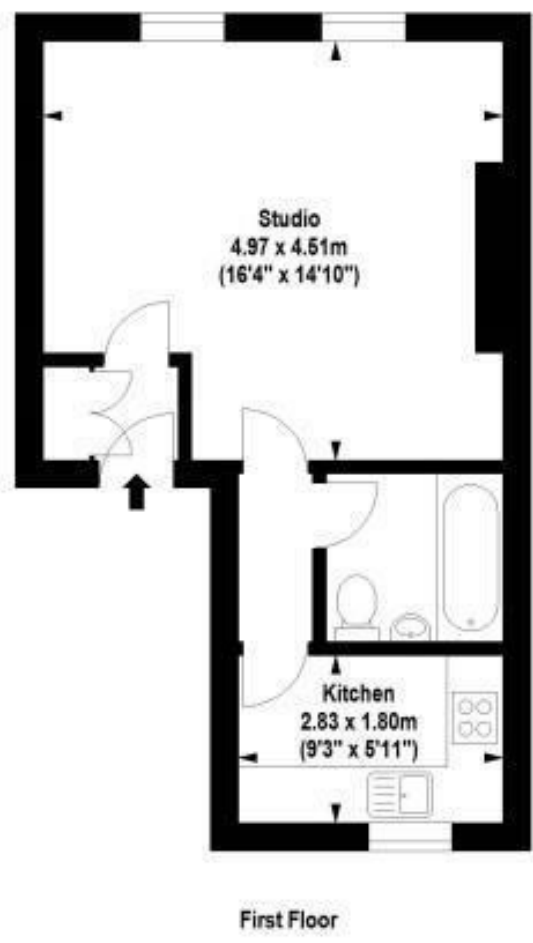
Deposit: One weeks' rent to reserve, with a security deposit of either 5 weeks' rent (for properties under £50,000pa) or 6 weeks' rent (for those over £50,000pa).

Area Map





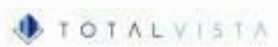
Floor Plan



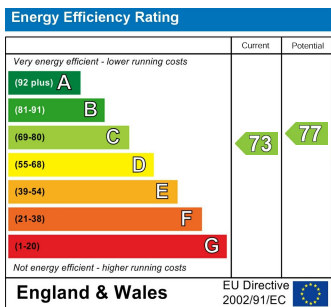
For Identification Purposes Only. Not To Scale. © www.totalvista.uk 2019

Spencer Road, W3

Approx. Gross Internal Area
33.36 Sq M - 359 Sq Ft



Energy Efficiency Graph



Viewing

Please contact our Lettings SB Office on 0208 740 8740 if you wish to arrange a viewing appointment for this property or require further information.

- CHARMING VICTORIAN ▪ ELEGANT HARDWOOD FLOORING CONVERSION
- SPACIOUS STUDIO ROOM ▪ SUNLIT KITCHEN
- MODERN STAINLESS STEEL APPLIANCES ▪ RELAXING BATHROOM
- EXCELLENT TRANSPORT LINKS ▪ CLOSE TO SHOPPING AND DINING
- OFFERED UNFURNISHED ▪ BUILT-IN STORAGE

For further information contact:

Lettings SB, 234 Uxbridge Road, Shepherds Bush, London, W12 7JD

Tel: 0208 740 8740 Email: enquiries@jorgensenturner.com

<https://www.jorgensenturner.com/>

Disclaimer

These particulars, whilst believed to be accurate are set out as a general outline only for guidance and do not constitute any part of an offer or contract. Intending purchasers should not rely on them as statements of representation of fact, but must satisfy themselves by inspection or otherwise as to their accuracy. No person in this firm's employment has the authority to make or give any representation or warranty in respect of the property.