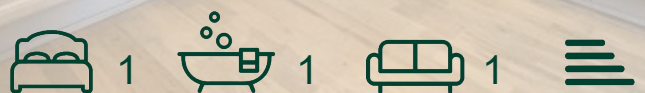


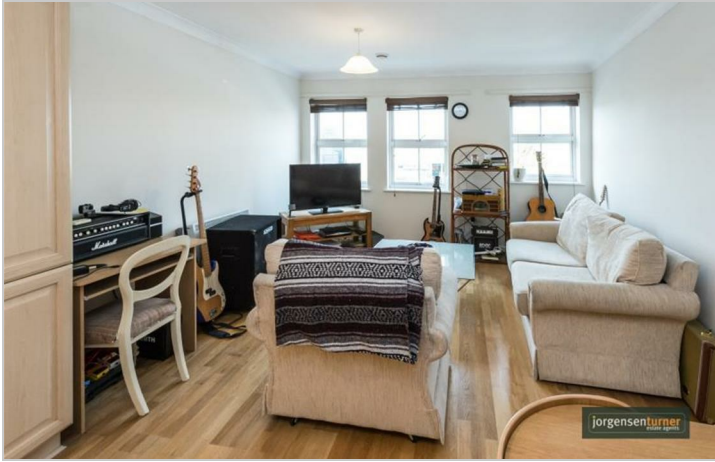
Aspen Court, Horn Lane,
London, W3

£1,495 Per Month



Aspen Court, Horn Lane, London, W3

£1,495 Per Month



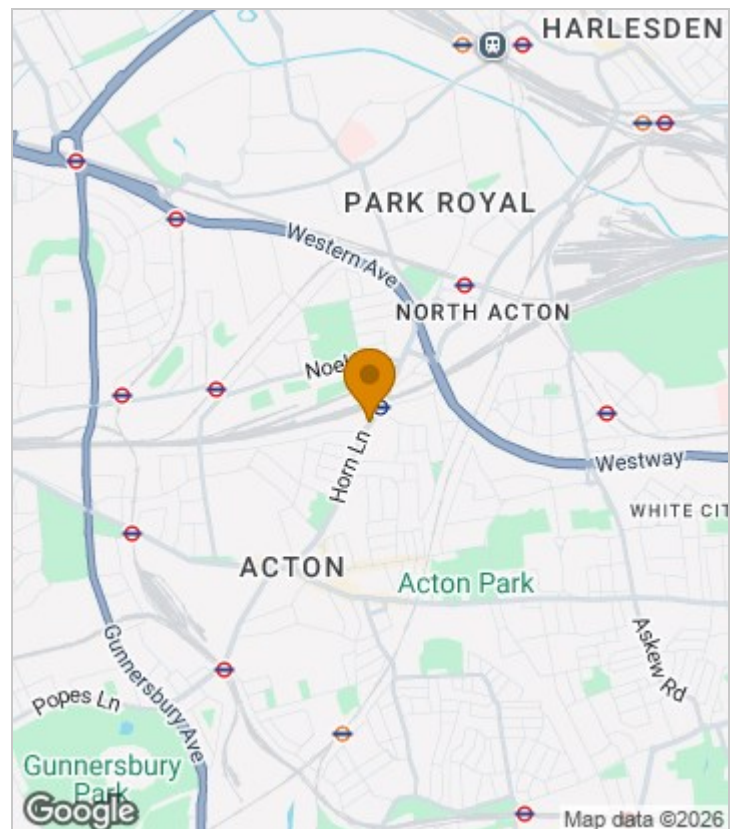
Summary Description

**** NEW TO THE MARKET**** Jorgensen Turner estate agents are pleased to present this beautiful one double bedroom flat. This unusually bright and airy flat is located on a second floor of a private block with a secure entry system. The apartment benefits from a spacious open plan reception room, large double bedroom with built-in storage and a modern bathroom. Additional benefits include wooden floors and abundance of storage. The flat is available from 8th November on a furnished basis. Located next to Acton Main Line station (Elizabeth line) and within easy access to North Acton station and multiple bus routes.

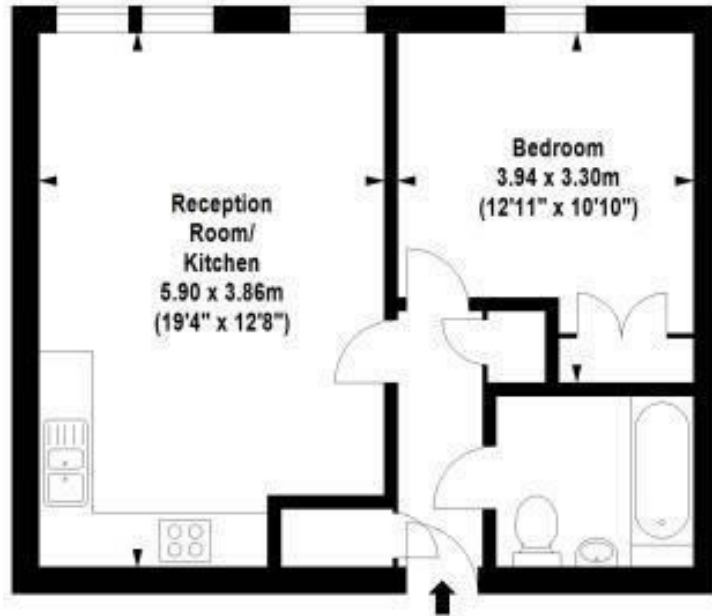
Council Tax Band: C - Ealing borough

Deposit: One weeks' rent to reserve, with a security deposit of either 5 weeks' rent (for properties under £50,000pa) or 6 weeks' rent (for those over £50,000pa).

Area Map



Floor Plan



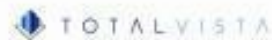
Second Floor



For Identification Purposes Only, Not To Scale. © www.totalvista.uk 2017

Aspen Court,
Hoan Lane, W3

Approx. Gross Internal Area
43.46 Sq M - 468 Sq Ft



Energy Efficiency Graph



Viewing

Please contact our Lettings SB Office on 0208 740 8740 if you wish to arrange a viewing appointment for this property or require further information.

- One bedroom flat
- Furnished
- Long term let
- Close to Acton main line Elizabeth line
- Secure building
- Available soon
- Double glazed windows

For further information contact:

Lettings SB, 234 Uxbridge Road, Shepherds Bush, London, W12 7JD

Tel: 0208 740 8740 Email: enquiries@jorgensenturner.com

<https://www.jorgensenturner.com/>

Disclaimer

These particulars, whilst believed to be accurate are set out as a general outline only for guidance and do not constitute any part of an offer or contract. Intending purchasers should not rely on them as statements of representation of fact, but must satisfy themselves by inspection or otherwise as to their accuracy. No person in this firm's employment has the authority to make or give any representation or warranty in respect of the property.