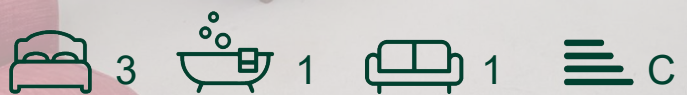
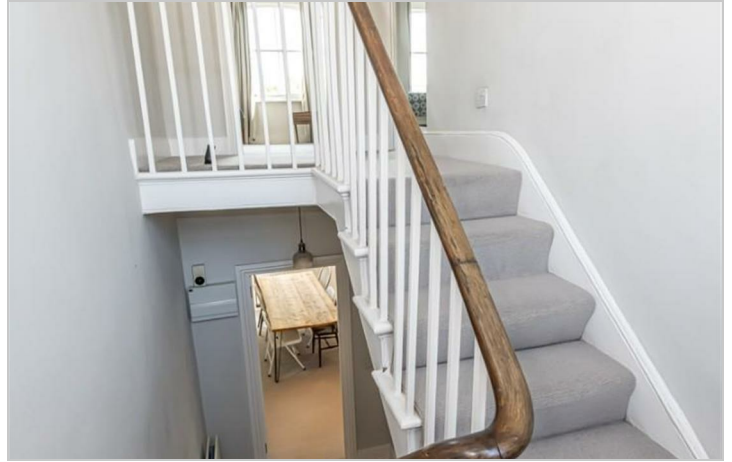


Coningham Road,
Shepherds Bush, London,
W12 8JG
£3,000 Per Month



Coningham Road, Shepherds Bush, London, W14 0

£3,000 Per Month



Summary Description

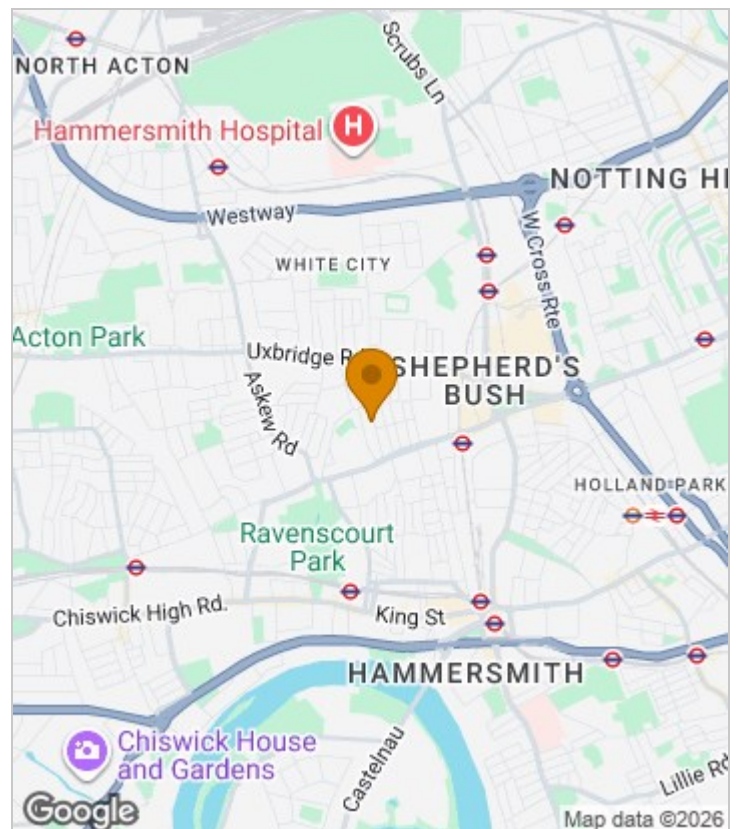
****NEW TO THE MARKET**** Jorgensen Turner are proud to offer this beautifully presented three double bedroom, one bathroom split level apartment. This lovely property offers a spacious reception room and separate eat-in kitchen/ diner with modern built in appliances.

Coningham Road is walking distance to multiple tube lines including Hammersmith and City, Central and the Circle line, as well as many bus routes. Shepherds Bush Green offers a large range of bars, restaurants, Cafes and Westfield White City.

Available now and offered part furnished, early viewings are highly recommended.

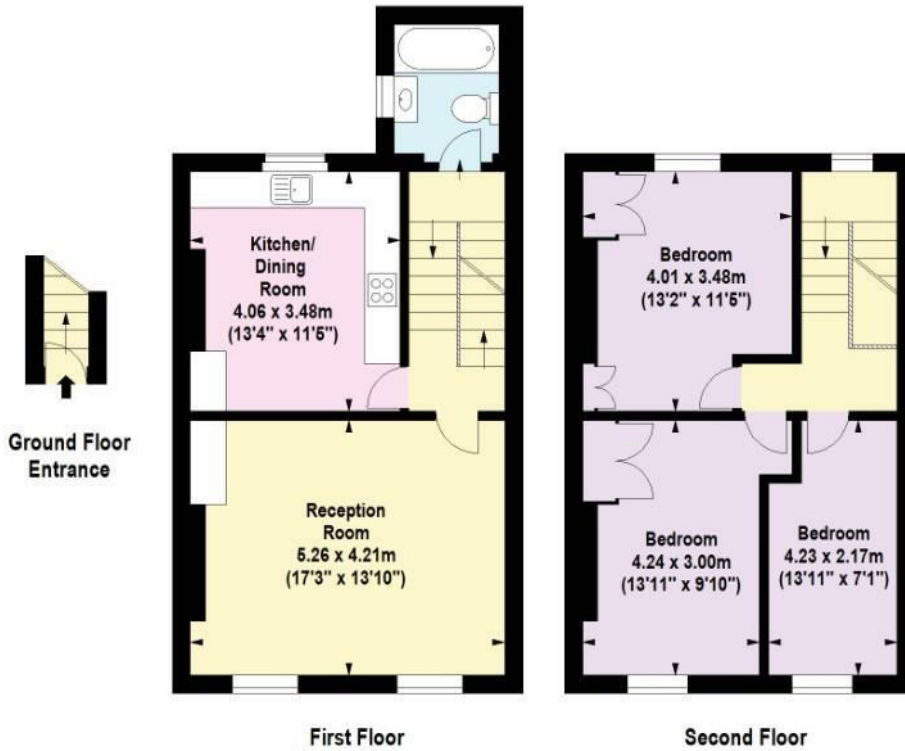
EPC Rating: C

Area Map





Floor Plan



For Identification Purposes Only. Not To Scale. © www.totalvista.uk 2025

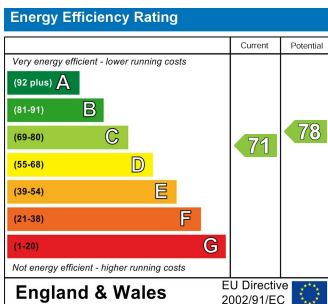


Coningham Road, W12

Approx. Gross Internal Area
93.64 Sq M - 1008 Sq Ft

TOTALVISTA

Energy Efficiency Graph



Viewing

Please contact our Lettings SB Office on 0208 740 8740 if you wish to arrange a viewing appointment for this property or require further information.

- Beautifully presented
- Large reception room
- Spilt level apartment
- Bright and airy
- Three double bedrooms throughout
- Eat in kitchen/diner
- Available now
- EPC Rating: C

For further information contact:

Lettings SB, 234 Uxbridge Road, Shepherds Bush, London, W12 7JD

Tel: 0208 740 8740 Email: enquiries@jorgensenturner.com

<https://www.jorgensenturner.com/>

Disclaimer

These particulars, whilst believed to be accurate are set out as a general outline only for guidance and do not constitute any part of an offer or contract. Intending purchasers should not rely on them as statements of representation of fact, but must satisfy themselves by inspection or otherwise as to their accuracy. No person in this firm's employment has the authority to make or give any representation or warranty in respect of the property.