



jt | JORGENSENTURNER



Richmond Way, Brook  
Green, W14

£1,900

jt



1



1



1

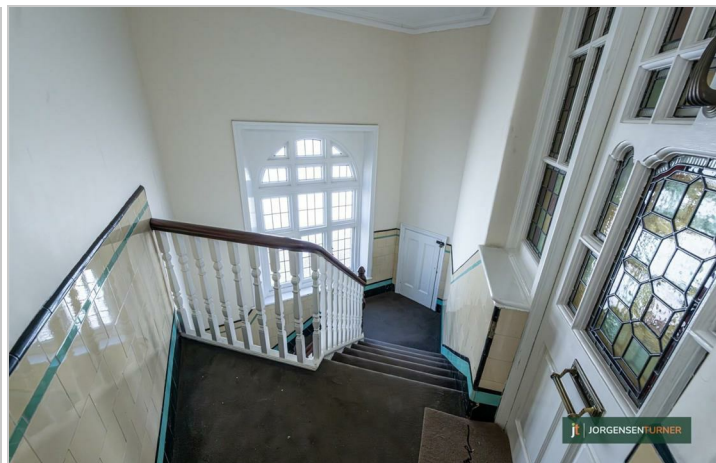


D

jt

# Richmond Way, Brook Green, W14

£1,900



## Summary Description

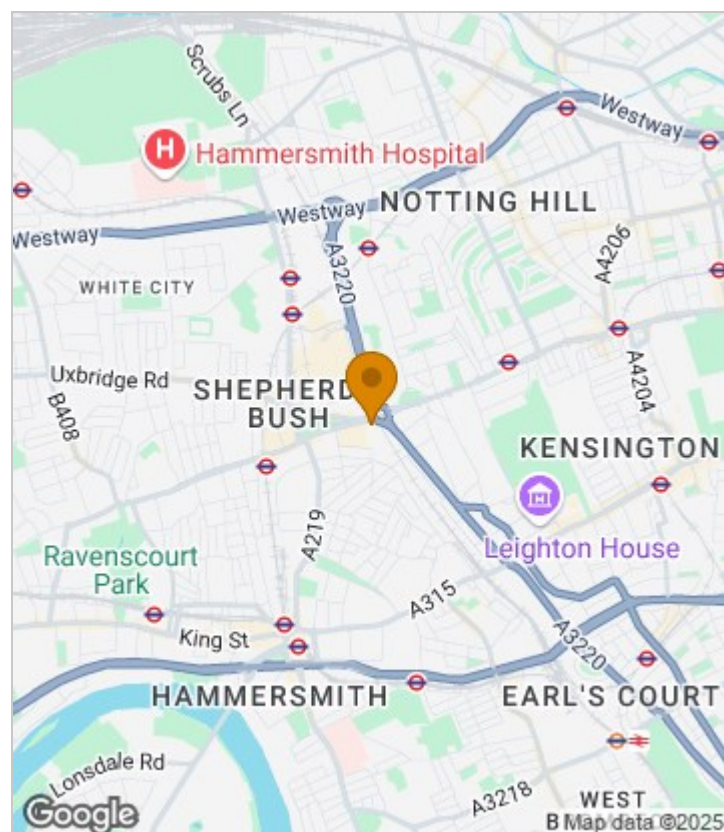
**\*\*AVAILABLE NOW\*\*** Jorgensen Turner are pleased to offer this newly redecorated one double bedroom apartment in Brook Green, W14. Super bright and spacious throughout this lovely property comes unfurnished and is available NOW.

Early viewing are highly recommended for this stunning flat.

Council Tax Band: D- H&F

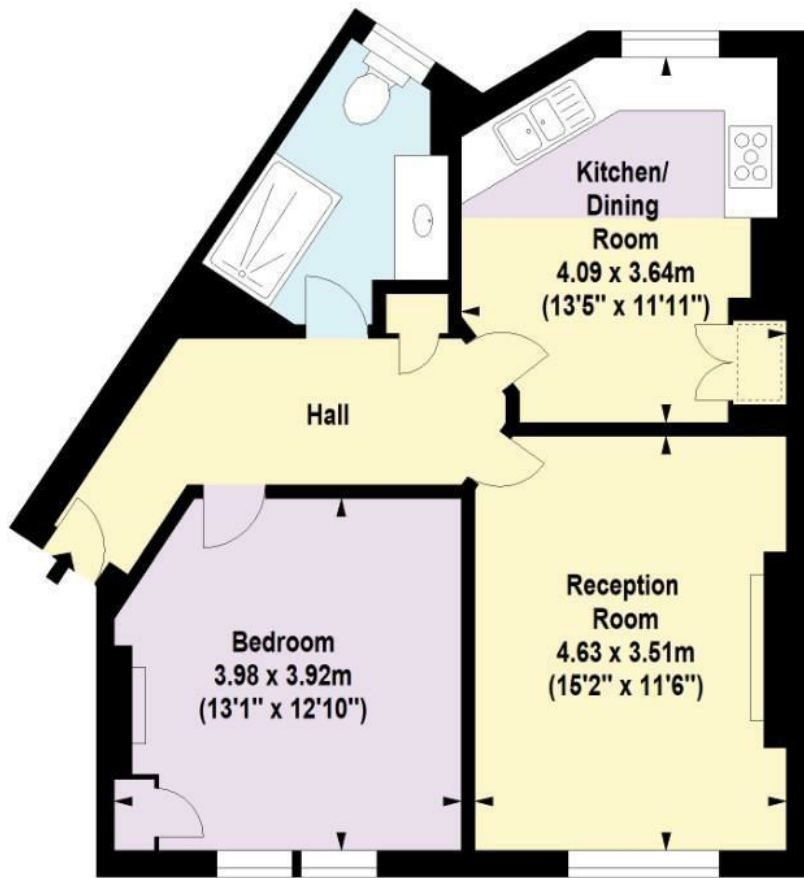
A holding deposit of 1 weeks rent will be required to secure the property and a Security deposit of 5 weeks rent (for rents under £50,000 pa) or 6 weeks (for rents over £50,000 pa)

## Area Map





# Floor Plan



Second Floor

For Identification Purposes Only. Not To Scale. © www.totalvista.uk 2025

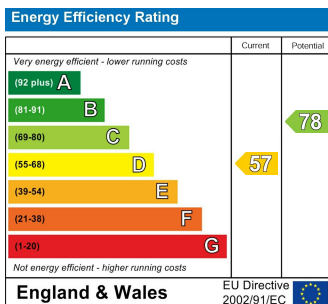


Addison Park Mansions, W14

Approx. Gross Internal Area  
61.13 Sq M - 658 Sq Ft



## Energy Efficiency Graph



## Viewing

Please contact our Lettings SB Office on 0208 740 8740 if you wish to arrange a viewing appointment for this property or require further information.

- NEWLY DECORATED
- BRAND NEW BATHROOM THROUGHOUT
- BRAND NEW CARPET
- UNFURNISHED
- BRIGHT AND AIRY
- DOUBLE GLAZED WINDOWS
- GOOD SIZE KITCHEN DINER

For further information contact:

Lettings SB, 234 Uxbridge Road, Shepherds Bush, London, W12 7JD

Tel: 0208 740 8740 Email: [enquiries@jorgensenturner.com](mailto:enquiries@jorgensenturner.com)

<https://www.jorgensenturner.com/>

### Disclaimer

These particulars, whilst believed to be accurate are set out as a general outline only for guidance and do not constitute any part of an offer or contract. Intending purchasers should not rely on them as statements of representation of fact, but must satisfy themselves by inspection or otherwise as to their accuracy. No person in this firm's employment has the authority to make or give any representation or warranty in respect of the property.

