



jt | JORGENSENTURNER



Loftus Road, Shepherds
Bush, London

Asking Price £375,000



 1
  1
  1
  C

Loftus Road, Shepherds Bush, London

Asking Price £375,000



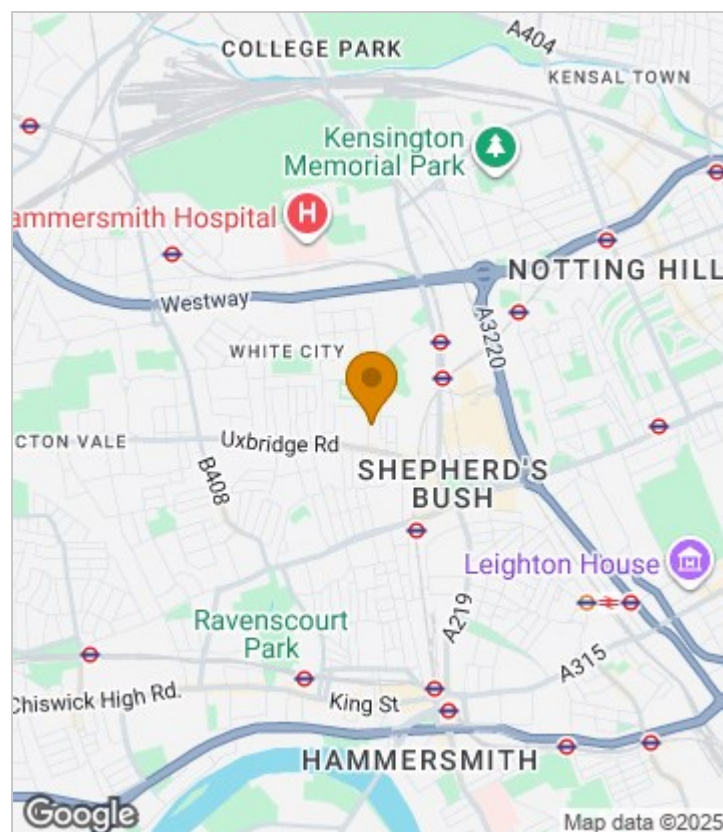
Summary Description

Loftus Road W12. A charming one bedroom apartment on the top floor of this attractive period building. The property is really well presented throughout, offering a spacious reception to the front opening out onto a modern fitted kitchen. To the middle there's a three piece bathroom and a wide landing. To the rear there's a double bedroom with impressive views over gardens to the rear. The property is offer with a share of freehold.

The location is well served by a number of excellent independent shops, coffee shops, bars and pubs (Princess Victoria) along the Uxbridge Road. Transport wise the property is well served by the Central Line (White City & Shepherds Bush), the Circle Line & Hammersmith & City Line (Shepherds Bush Market and Wood Lane) and London Overground (Shepherds Bush). The Westfield shopping centre is also only a short walk away from the property. St Stephen's primary school (rated excellent by Ofsted) is only a short walk from the property.

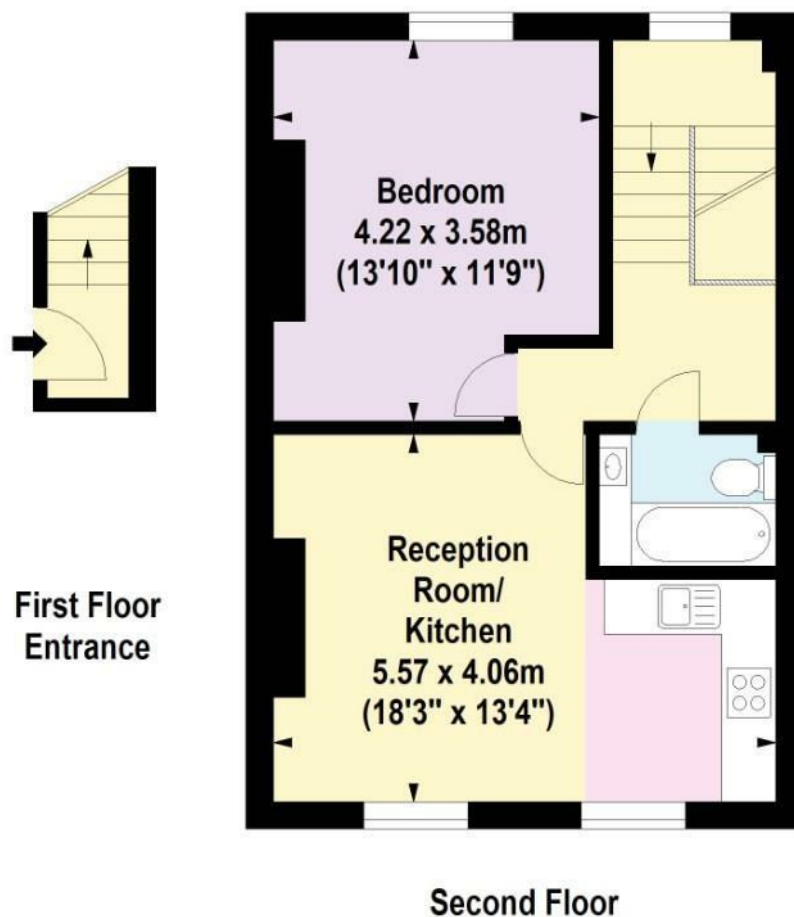
Share of Freehold, Service Charge TBC, GR NA

Area Map





Floor Plan



For Identification Purposes Only. Not To Scale. © www.totalvista.uk 2025

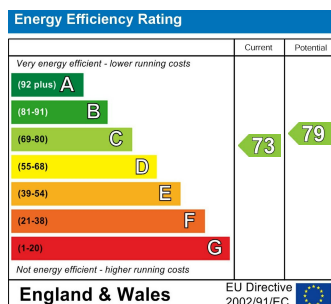


Loftus Road, W12

Approx. Gross Internal Area
48.68 Sq M - 524 Sq Ft



Energy Efficiency Graph



Viewing

Please contact our Lettings SB Office on 0208 740 8740 if you wish to arrange a viewing appointment for this property or require further information.

- ONE DOUBLE BEDROOM
- TOP FLOOR FLAT
- OPEN PLAN LOUNGE WITH FITTED KITCHEN
- GOOD ORDER THROUGHOUT
- SHARE OF FREEHOLD
- CHAIN FREE
- CLOSE TO WESTFIELD WHITE CITY
- CLOSE TO SOHO HOUSE
- CENTRAL SHEPHERDS BUSH LOCATION

For further information contact:

Lettings SB, 234 Uxbridge Road, Shepherd's Bush, London, W12 7JD

Tel: 0208 740 8740 Email: enquiries@jorgensenturner.com

<https://www.jorgensenturner.com/>

Disclaimer

These particulars, whilst believed to be accurate are set out as a general outline only for guidance and do not constitute any part of an offer or contract. Intending purchasers should not rely on them as statements of representation of fact, but must satisfy themselves by inspection or otherwise as to their accuracy. No person in this firm's employment has the authority to make or give any representation or warranty in respect of the property.