



jt | JORGENSENTURNER



Kingsdown Avenue, West
Ealing, London

£2,150 Per Month



1 2 1 D

Kingsdown Avenue, West Ealing, London

£2,150 Per Month



Summary Description

****PETS CONSIDERED/ AVAILABLE NOW **** Large One bedroom apartment with extra study room and two modern bathrooms, split over two levels.

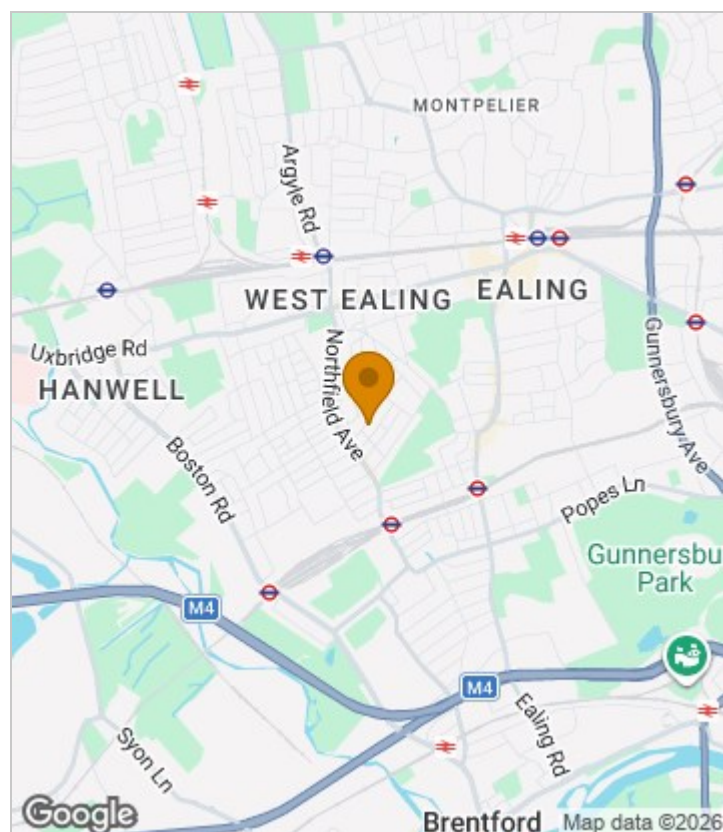
At the heart of this home is its open-plan living area, featuring high ceilings and a restored fireplace, perfect for cosy evenings or entertaining guests. The sleek, modern, open-plan kitchen, equipped with high-gloss cabinetry and stainless steel appliances, offers ample counter space and flows effortlessly into the dining area, creating an ideal space for both casual nights in or dinner with guests. The loft-style master bedroom, with vaulted ceilings and skylights, adds a luxurious feel, while the bold green-tiled bathrooms, featuring walk-in showers and chrome fixtures, ensure both style and convenience.

Located on a peaceful residential street in West Ealing, this fully furnished property is move-in ready, featuring bespoke built-in shelving and plenty of natural light throughout. Its Victorian exterior, complete with a gabled roof and ivy-clad façade, adds to its charm, while its proximity to West Ealing Station and excellent local amenities make it a highly desirable home. Available now, this apartment offers the perfect combination of comfort and style.

Council Tax Band D—Ealing

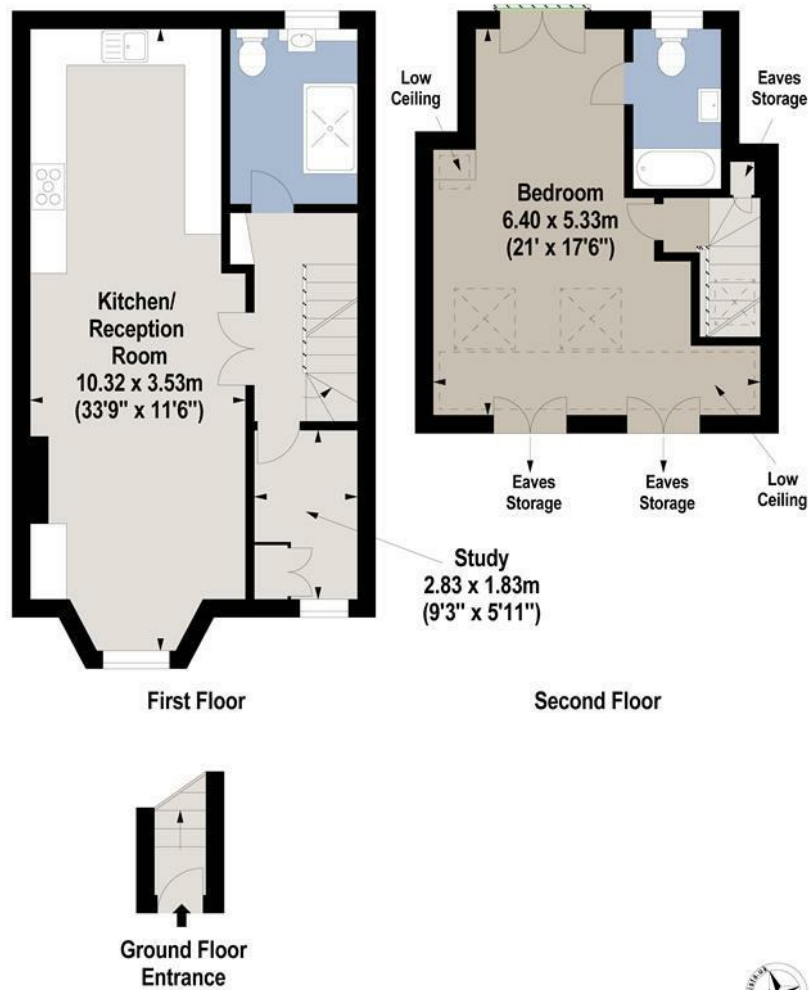
Deposit: One weeks' rent to reserve, with a security deposit of either 5 weeks' rent (for properties under £50,000pa) or 6 weeks' rent (for those over £50,000pa).

Area Map





Floor Plan



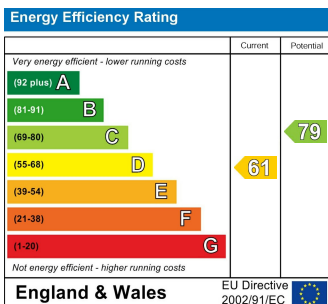
For Identification Purposes Only. Not To Scale. © www.totalvista.uk 2024

Kingsdown Avenue, W13

Approx. Gross Internal Area
85.65 Sq M - 922 Sq Ft



Energy Efficiency Graph



Viewing

Please contact our Lettings SB Office on 0208 740 8740 if you wish to arrange a viewing appointment for this property or require further information.

- ****PETS CONSIDERED****
- **CLOSE TO AMENTIES**
- **OPEN-PLAN LIVING AND DINING SPACE**
- **FURNISHED**
- **SPLIT LEVEL APARTMENT**
- **TWO BATHROOMS WITH WALK-IN SHOWERS**
- **LARGE BEDROOM WITH EXTRA STUDY ROOM**

For further information contact:

Lettings SB, 234 Uxbridge Road, Shepherds Bush, London, W12 7JD

Tel: 0208 740 8740 Email: enquiries@jorgensenturner.com

<https://www.jorgensenturner.com/>

Disclaimer

These particulars, whilst believed to be accurate are set out as a general outline only for guidance and do not constitute any part of an offer or contract. Intending purchasers should not rely on them as statements of representation of fact, but must satisfy themselves by inspection or otherwise as to their accuracy. No person in this firms employment has the authority to make or give any representation or warranty in respect of the property.