



jorgensenturner
estate agents



The Vale, Acton, W3

£1,495 Per Month



jo  1  1  1  C jo

The Vale, Acton, W3

£1,495 Per Month

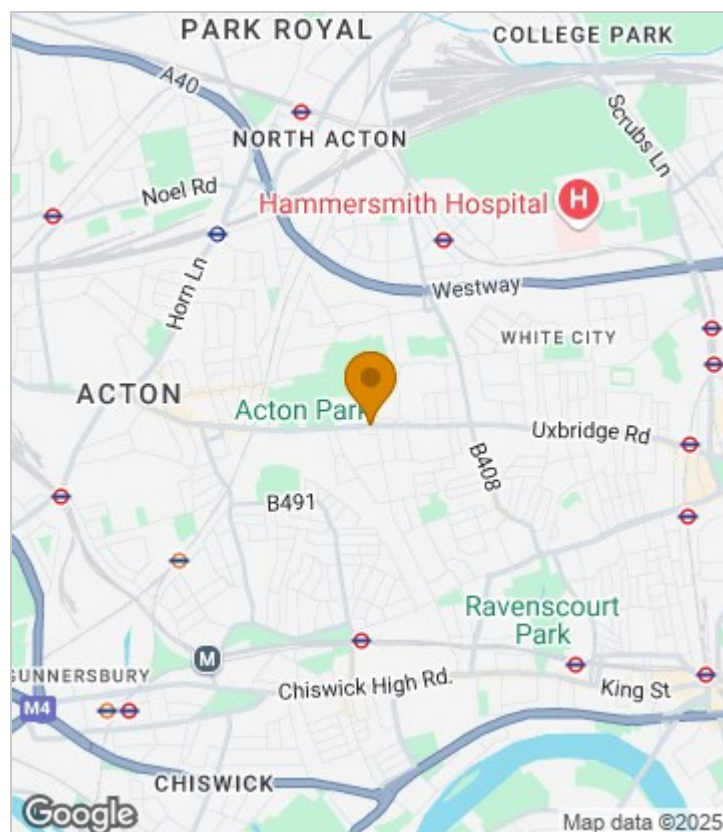


Summary Description

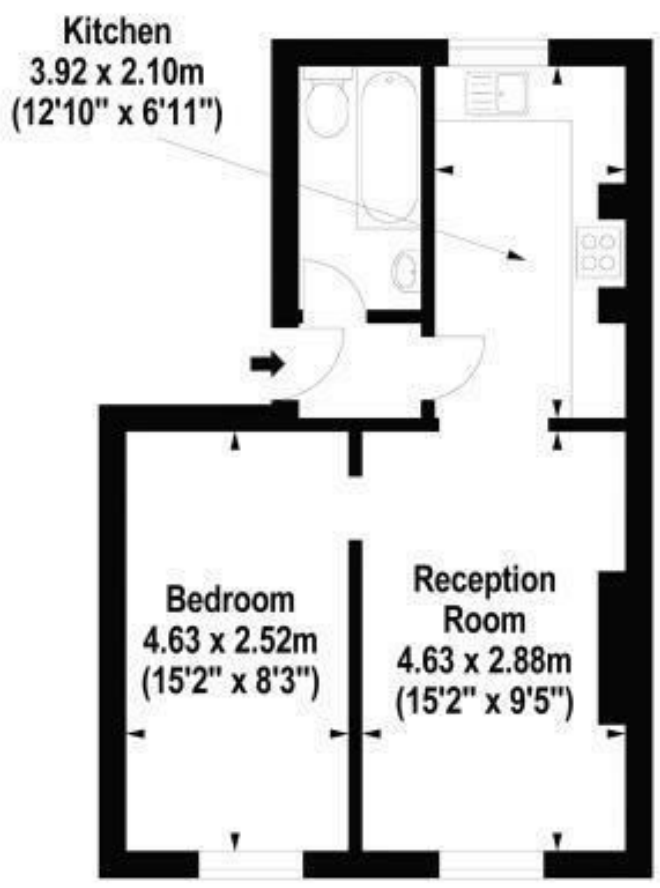
****NEW TO THE MARKET**** Jorgensen Turner estate agents are pleased to offer a bright one bedroom second floor flat. Situated in a convenient location for varied local bus and tube connections. The property features bright and spacious accommodation throughout, a modern fitted kitchen, a smart bathroom with tiled flooring, a bright and spacious living room and a good sized bedroom. Offered to the market furnished this flat is ideal for a single or professional couple. Available early 18th June 2025.

Deposit: One weeks' rent to reserve, with a security deposit of either 5 weeks' rent (for properties under £50,000pa) or 6 weeks' rent (for those over £50,000pa).

Area Map



Floor Plan



Second Floor



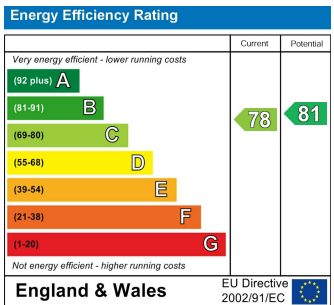
For Identification Purposes Only. Not To Scale. © www.totalvista.uk 2020

The Vale, W3

Approx. Gross Internal Area
40.13 Sq M - 432 Sq Ft



Energy Efficiency Graph



Viewing

Please contact our Lettings SB Office on 0208 740 8740 if you wish to arrange a viewing appointment for this property or require further information.

- ONE DOUBLE BEDROOM ▪ FURNISHED FLAT
- BRIGHT AND AIRY ▪ GREAT VALUE
- CLOSE TO PLENTY OF AMENITIES ▪ WELL PRESENTED THROUGHOUT

For further information contact:
 Lettings SB, 234 Uxbridge Road, Shepherds Bush, London, W12 7JD
 Tel: 0208 740 8740 Email: enquiries@jorgensenturner.com
<https://www.jorgensenturner.com/>

Disclaimer

These particulars, whilst believed to be accurate are set out as a general outline only for guidance and do not constitute any part of an offer or contract. Intending purchasers should not rely on them as statements of representation of fact, but must satisfy themselves by inspection or otherwise as to their accuracy. No person in this firms employment has the authority to make or give any representation or warranty in respect of the property.

