



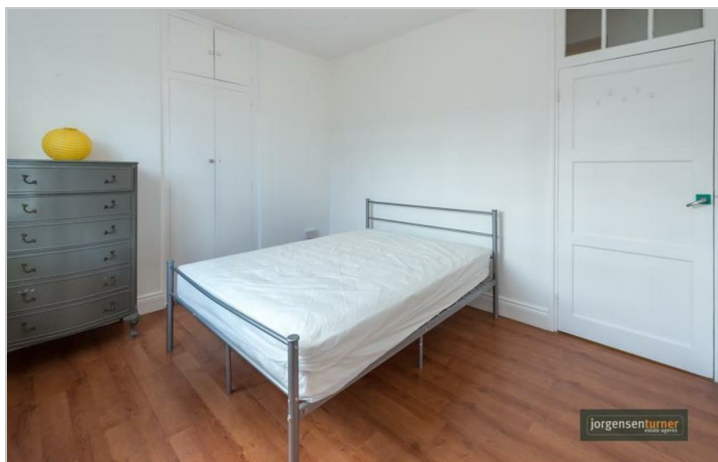
Canning House, White
City Estate

£2,000 Per Month



Canning House, White City Estate

£2,000 Per Month



Summary Description

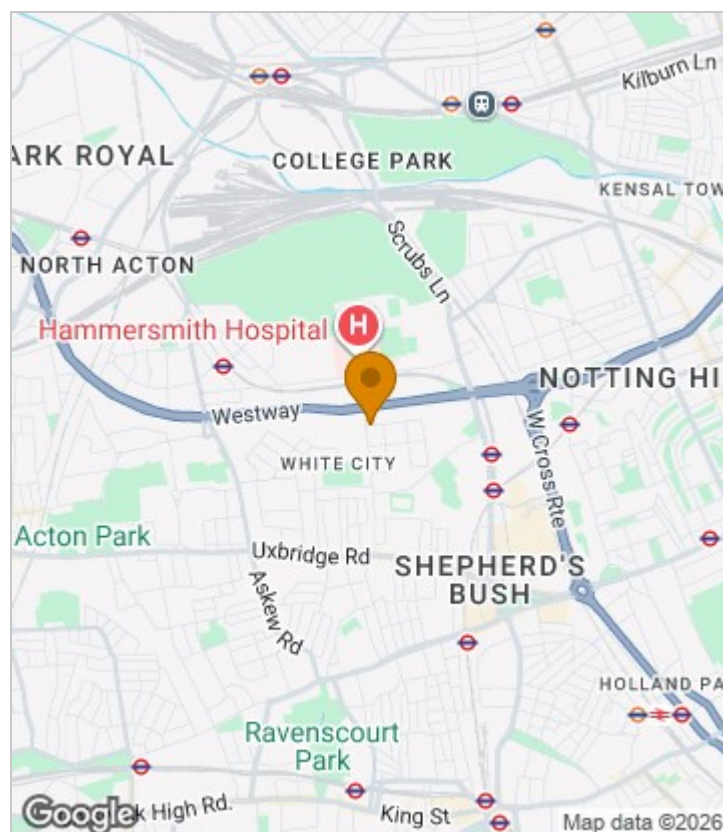
****Great Value**** Jorgensen Turner estate agents Shepherds Bush are proud to offer this **NEWLY - REDECORATED** spacious top floor three double bedroom apartment within walking distance to all the shops bars and restaurants in the Westfield Shopping centre and central Shepherds Bush. The apartment has three double bedrooms, a spacious reception room with wood flooring, modern kitchen with appliances and bathroom with separate WC on a part-furnished basis.

Available NOW

Council Tax—Hammersmith & Fulham

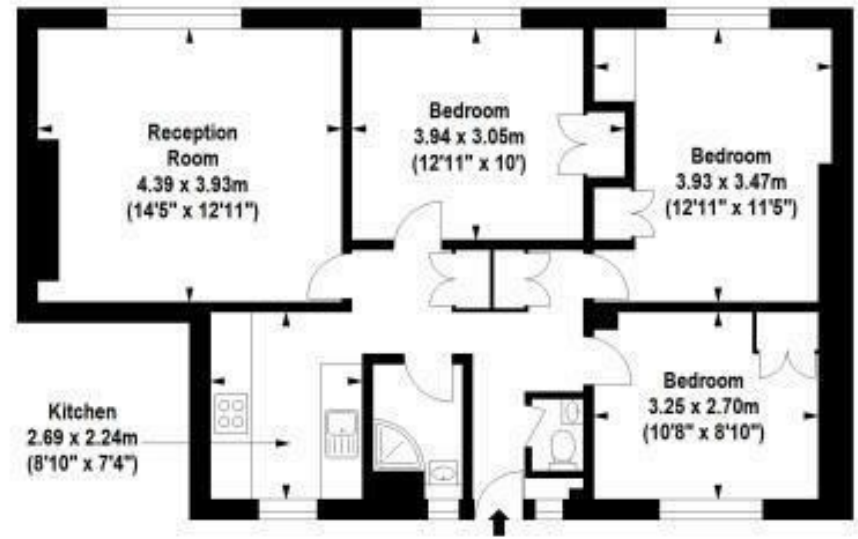
Deposit: One weeks' rent to reserve, with a security deposit of either 5 weeks' rent (for properties under £50,000pa) or 6 weeks' rent (for those over £50,000pa).

Area Map





Floor Plan



Third Floor

For Identification Purposes Only. Not To Scale. © www.totalvista.uk 2018

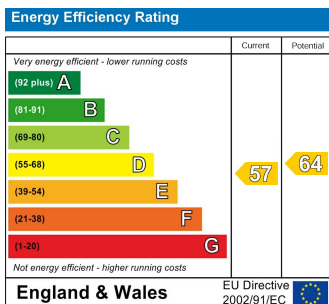


Canning House, W12

Approx. Gross Internal Area
71.07 Sq M - 765 Sq Ft



Energy Efficiency Graph



Viewing

Please contact our Lettings SB Office on 0208 740 8740 if you wish to arrange a viewing appointment for this property or require further information.

- REDECORATED THROUGHOUT
- GREAT VALUE
- FOURTH FLOOR APARTMENT
- PERFECT FOR SHARERS
- PART-FURNISHED
- THREE DOUBLE BEDROOMS
- AVAILABLE NOW

For further information contact:

Lettings SB, 234 Uxbridge Road, Shepherds Bush, London, W12 7JD

Tel: 0208 740 8740 Email: enquiries@jorgensenturner.com

<https://www.jorgensenturner.com/>

Disclaimer

These particulars, whilst believed to be accurate are set out as a general outline only for guidance and do not constitute any part of an offer or contract. Intending purchasers should not rely on them as statements of representation of fact, but must satisfy themselves by inspection or otherwise as to their accuracy. No person in this firm's employment has the authority to make or give any representation or warranty in respect of the property.