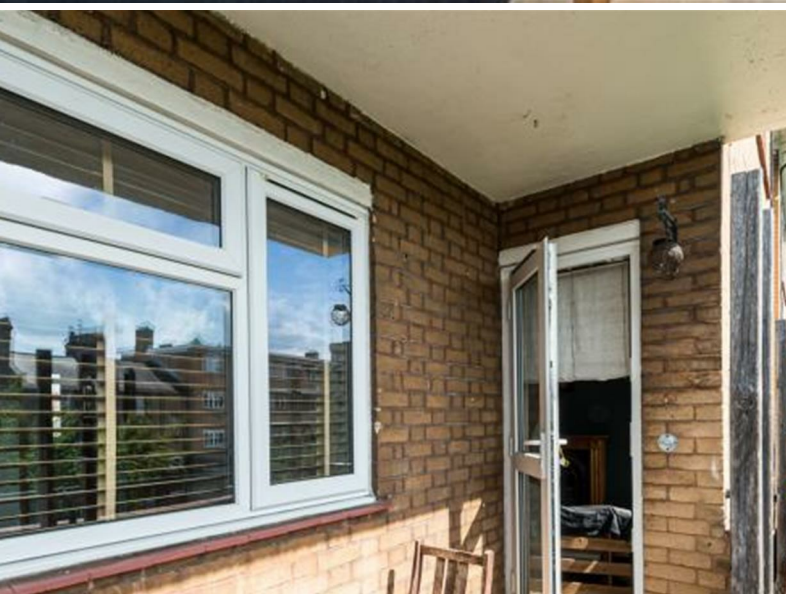


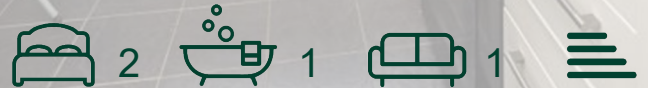


jt | JORGENSENTURNER



Arlington House, Tunis
Road, London, W12

£2,200 Per Month



jt

Arlington House, Tunis Road, London, W12

£2,200 Per Month



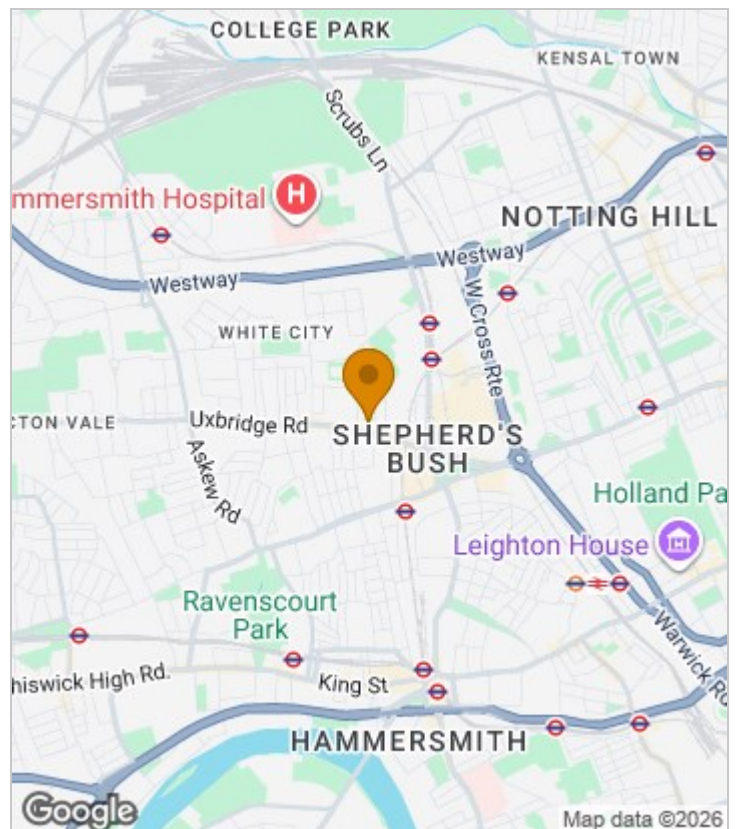
Summary Description

**** NEW TO THE MARKET**** Jorgensen Turner estate agents Shepherds Bush are proud to present this incredibly spacious two-bedroom flat in the heart of Shepherds Bush. Located on the second floor of this purpose built block this property offers well-proportioned rooms throughout with a good standard of finish throughout. With two equally sized bedrooms, a bright living room which gives direct access to a private balcony, a separate kitchen, modern three-piece bathroom suite and additional balcony. Further benefits include ample storage as well as access to communal gardens. The flat is moments from the local transport and amenities of central Shepherds Bush. Offered furnished, early viewings are very much recommended.

Council Tax Band: C - H&F

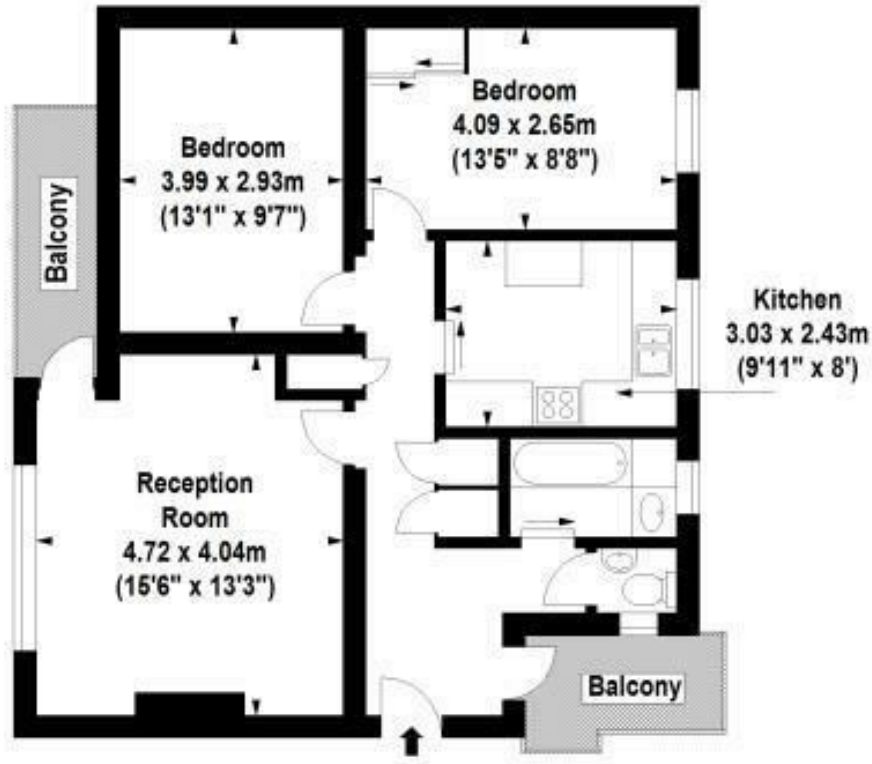
Deposit: One weeks' rent to reserve, with a security deposit of either 5 weeks' rent (for properties under £50,000pa) or 6 weeks' rent (for those over £50,000pa).

Area Map





Floor Plan

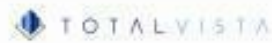


Second Floor

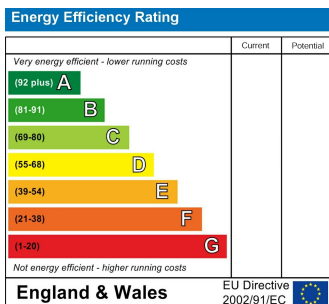
For Identification Purposes Only. Not To Scale. © www.alanaiken.com 2017

Arlington House,
Tunis Road, W12

Approx. Gross Internal Area
68.10 Sq M - 733 Sq Ft



Energy Efficiency Graph



Viewing

Please contact our Lettings SB Office on 0208 740 8740 if you wish to arrange a viewing appointment for this property or require further information.

- Two double bedroom flat
- Two private balconies
- Available 1st December
- Council Tax Band C - H&F
- Second floor
- Abundance of storage
- Close to Shepherds Bush stations
- Furnished

For further information contact:

Lettings SB, 234 Uxbridge Road, Shepherds Bush, London, W12 7JD

Tel: 0208 740 8740 Email: enquiries@jorgensenturner.com

<https://www.jorgensenturner.com/>

Disclaimer

These particulars, whilst believed to be accurate are set out as a general outline only for guidance and do not constitute any part of an offer or contract. Intending purchasers should not rely on them as statements of representation of fact, but must satisfy themselves by inspection or otherwise as to their accuracy. No person in this firm's employment has the authority to make or give any representation or warranty in respect of the property.