



Adelaide Grove Shepherds
Bush, W12

£1,850 Per Month



Adelaide Grove Shepherds Bush, W12

£1,850 Per Month



Summary Description

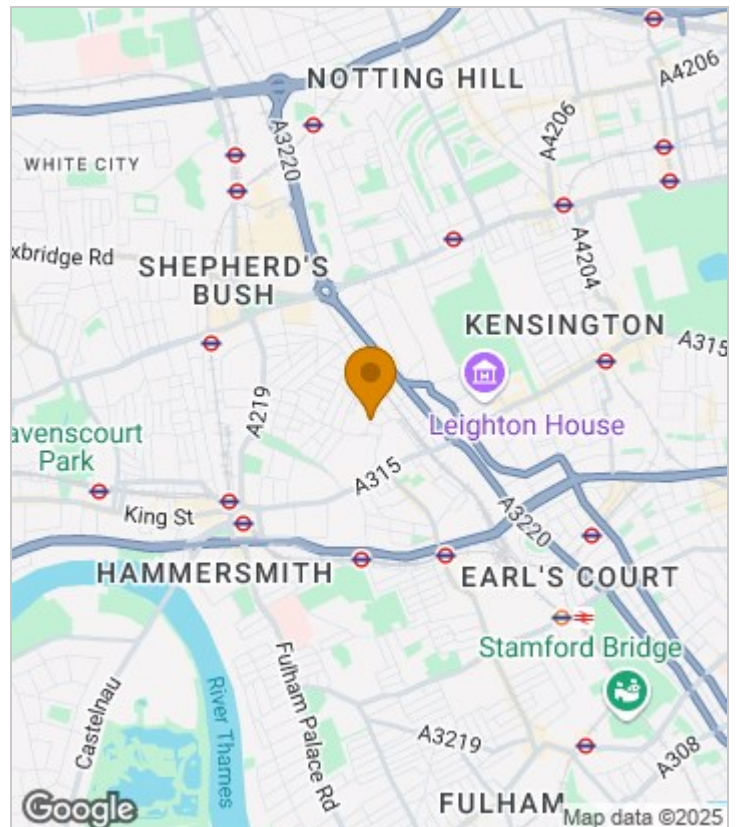
****GARDEN FLAT**** Jorgensen Turner estate agents Shepherds Bush are proud to present this lovely one-bedroom garden flat with an additional study on Adelaide Grove, W12.

Available 16th APRIL 2025

Council Tax Band D—Hammersmith & Fulham.

Deposit: One weeks' rent to reserve, with a security deposit of either 5 weeks' rent (for properties under £50,000pa)

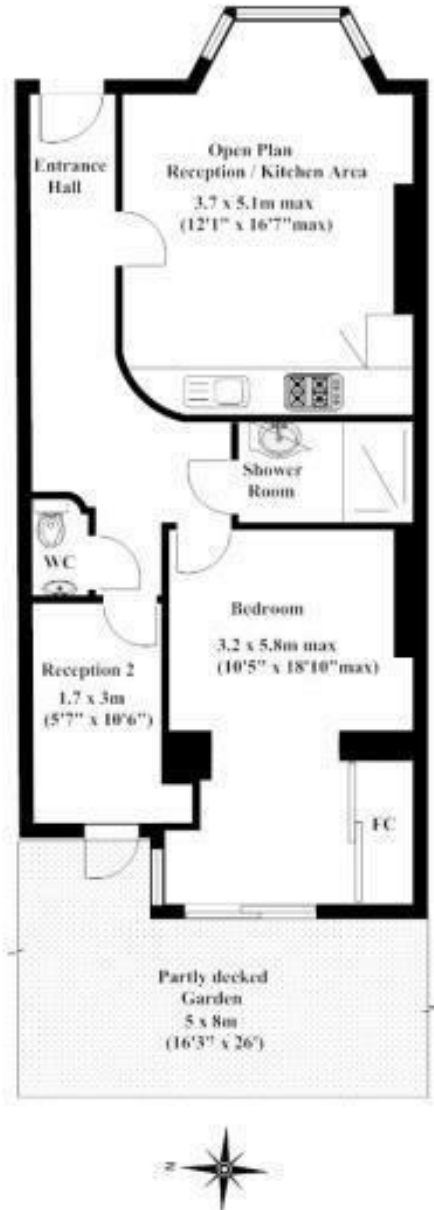
Area Map



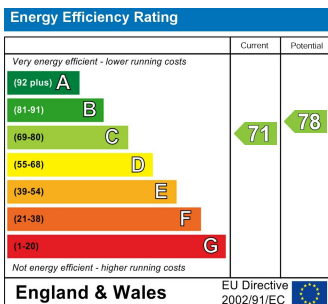
Floor Plan

Adelaide Grove W120JU

Approx. Gross Internal Area = 41m square
(436ft square)



Energy Efficiency Graph



Viewing

Please contact our Lettings SB Office on 0208 740 8740 if you wish to arrange a viewing appointment for this property or require further information.

- PRIVATE GARDEN
- PART FURNISHED
- AIRY AND BRIGHT
- LOWER GROUND FLOOR FLAT
- EXTRA STUDY ROOM
- 16th APRIL 2025
- PLENTY OF STORAGE

For further information contact:

Lettings SB, 234 Uxbridge Road, Shepherds Bush, London, W12 7JD

Tel: 0208 740 8740 Email: enquiries@jorgensenturner.com

<https://www.jorgensenturner.com/>

Disclaimer

These particulars, whilst believed to be accurate are set out as a general outline only for guidance and do not constitute any part of an offer or contract. Intending purchasers should not rely on them as statements of representation of fact, but must satisfy themselves by inspection or otherwise as to their accuracy. No person in this firm's employment has the authority to make or give any representation or warranty in respect of the property.

